



ELON
UNIVERSITY

DEPARTMENT OF
Nursing

Undergraduate Student Handbook

2023-2024



762 East Haggard Avenue

Elon, NC 27244

336-278-6403

Table of Contents

Letter from the Program Director.....5

History and Overview:6

Philosophy:.....6

Purpose:.....6

Mission:7

Vision:7

Values:7

Approval and Accreditation:7

BSN Statement of Purpose8

 BSN Student Learning Outcomes 8

 Program Outcomes: 8

BSN Curriculum Framework10

TRADITIONAL BACHELOR OF SCIENCE IN NURSING CURRICULUM GUIDE12

ACCELERATED BACHELOR OF SCIENCE IN NURSING (ABSN) CURRICULUM GUIDE.....13

Department of Nursing Organizational Chart 2023-2024.....14

Elon University’s Honor Code15

Nursing Student Organizations16

Elon Resources17

 Barnes & Noble at Elon University 17

 Center for Access and Success..... 17

 CREDE 17

 Mission:..... 17

 Vision:..... 17

 Goals: 17

 Belk Library 17

 Information Technology Services 18

 E-Alert..... 18

 Mail Services 18

 Student Financial Services 18

 Student Health and Wellness..... 18

 Disabilities Resources 19

EUDON Ceremonies20

White Coat Ceremony	20
Pinning Ceremony	20
Commencement.....	20
BSN Awards	21
Dean Rebecca Neiduski Leadership Award.....	21
Academic Policy Numbers.....	22
<i>Title of Policy No. 1: Confidentiality.....</i>	<i>23</i>
<i>Title of Policy No. 2: Client and Family Photography.....</i>	<i>24</i>
<i>Title of Policy No. 3: Student Medical Forms</i>	<i>25</i>
<i>Title of Policy No. 4: Clinical Requirements and Deadlines</i>	<i>26</i>
<i>Title of Policy No. 5: Tuberculosis Screening</i>	<i>28</i>
<i>Title of Policy No. 6: Drug Screen</i>	<i>29</i>
<i>Title of Policy No. 7: Criminal Background Check</i>	<i>30</i>
<i>Title of Policy No. 8: CPR Certification.....</i>	<i>31</i>
<i>Title of Policy No. 9: Retention of Compliance Files.....</i>	<i>32</i>
<i>Title of Policy No. 10: Agency Orientation, Agency Policy, and Procedure Documents.....</i>	<i>33</i>
<i>Title of Policy No. 11: Technical Standards.....</i>	<i>34</i>
<i>Title of Policy No. 12: Latex Reactions</i>	<i>40</i>
<i>Title of Policy No. 13: Student Contact Information</i>	<i>41</i>
<i>Title of Policy No. 14: Infectious / Communicable Disease or Injury.....</i>	<i>42</i>
<i>Title of Policy No. 15: Consent to Touch</i>	<i>44</i>
<i>Title of Policy No. 16: Transportation to and from Clinical Sites</i>	<i>45</i>
<i>Title of Policy No. 17: Inclement Weather</i>	<i>46</i>
<i>Title of Policy No. 18: Student Parking (Campus & Clinical Sites).....</i>	<i>47</i>
<i>Title of Policy No. 19: Class/Clinical Attendance</i>	<i>48</i>
<i>Title of Policy No. 20: Substance Abuse</i>	<i>49</i>
<i>Title of Policy No. 21: Social Media</i>	<i>50</i>
<i>Title of Policy No. 22: Temporary Removal from Class or Clinical</i>	<i>52</i>
<i>Title of Policy No. 23: Student Practice Event Policy.....</i>	<i>53</i>
<i>Title of Policy No. 24: Dismissal from the Program – Clinical or Professional Reasons</i>	<i>55</i>
<i>Title of Title No. 25: Appeal of Dismissal.....</i>	<i>56</i>
<i>Title of Policy No. 26: Dropping or Withdrawing from a Nursing Course</i>	<i>57</i>
<i>Title of Policy No. 27: Program Reenrollment</i>	<i>58</i>

<i>Title of Policy No. 28: Lines of Authority for Students.....</i>	<i>59</i>
<i>Title of Policy No. 29: Formal Complaint</i>	<i>60</i>
<i>Title of Policy No. 30: CastleBranch</i>	<i>62</i>
<i>Title of Policy No. 31: Unsafe Practice</i>	<i>63</i>
<i>Title of Policy No. 32: Computer-based Testing Policy and Procedure for Course Exams</i>	<i>65</i>
<i>Title of Policy No. 33: Exam Security / Testing Procedures</i>	<i>66</i>
<i>Title of Policy No. 34: EUDON Student and Faculty Forum.....</i>	<i>67</i>
<i>Title of Policy No. 35: Transfer into Nursing Program</i>	<i>68</i>
<i>Title of Policy No. 36: Dress Code for Pre-Licensure Students</i>	<i>69</i>
<i>Title of Policy No. 37: Clinical Attendance.....</i>	<i>71</i>
<i>Title of Policy No. 38: ATI Testing (Testing and Remediation Program)</i>	<i>73</i>
<i>Title of Policy No. 39: NCLEX-RN® and Licensure.....</i>	<i>76</i>
<i>Title of Policy No. 40: Pre-licensure Course Grades and Grading Scale</i>	<i>77</i>
<i>Title of Policy No. 41 Grading Courses with a Clinical Component.....</i>	<i>78</i>
<i>Title of Policy No. 42: Health Insurance Requirement</i>	<i>80</i>
<i>Title of Policy No. 43: Progression in the Major</i>	<i>81</i>
<i>Title of Policy No. 44: Dismissal from the Program – Academic Reasons</i>	<i>84</i>
<i>Title of Policy No. 45: Readmission to the Program</i>	<i>85</i>
<i>EUDON STUDENT FORMS AND APPENDICES</i>	<i>86</i>
<i>Acknowledgement of the EUDON Student Handbook</i>	<i>87</i>
<i>CRIMINAL BACKGROUND/DRUG SCREEN POLICY</i>	<i>88</i>
<i>Hepatitis B Vaccine Declination Form.....</i>	<i>89</i>
<i>Student Practice Event Form.....</i>	<i>90</i>
<i>EUDON Appeal of Dismissal.....</i>	<i>92</i>
<i>Progression in the Major - Letter of Intent Form</i>	<i>93</i>
<i>Photo Release Form.....</i>	<i>94</i>



Letter from the Program Director

Dear Phoenix,

I am happy to welcome you to Elon University and to the School of Health Sciences. More importantly, welcome to the Department of Nursing family. Your decision to join Elon University's nursing program demonstrates your belief and support of our vision to advance health equity and our commitment to inclusive excellence and speaks volumes to your character and career choice.

You are now a part of a nursing program dedicated to providing active and engaging learning opportunities, with state-of-the-art simulation equipment, virtual simulation activities, and e-technology at your fingertips. Completing a Bachelor of Science in Nursing at Elon means that you will be equipped with critical thinking skills, develop the ability to care for patients across the lifespan, and be able to use data to improve healthcare outcomes while being fiscally responsible to provide high quality and cost-effective care.

This handbook provides guidance for all nursing students, describes academic standards, policies, and procedures, and informs students of their rights and responsibilities. The Department of Nursing will uphold these policies and procedures. We retain the right to change policies and procedures as necessary for the welfare of our students or the integrity of the education program. The chair and faculty recognize their responsibility and commitment to keeping students informed of these changes. Students will be notified of changes before the implementation date.

This is a journey, and we are here to support your growth and success along the way. Please utilize every opportunity to ask questions and engage in all your clinical learning experiences. We are here to see you LEARN, THRIVE, CONNECT and RISE.

I am glad you are here!

Stacey H. Thomas

Dr. Stacey H. Thomas, DNP, APRN, FNP-C, RNC-OB

History and Overview:

Elon University Department of Nursing (EUDON) received initial approval from the North Carolina Board of Nursing (NCBON) for the establishment of the traditional and accelerated Bachelor of Science in Nursing programs in January 2021. The first cohort of Traditional and ABSN students were admitted in the Fall of 2021.

The Department of Nursing is housed within the School of Health Sciences (SHS) and enjoys interprofessional collaboration with the Department of Physical Therapy Education and the Department of Physician Assistant Studies. Two ancillary programs within the Program, the Client and Standardized Patient Program and Anatomical Gift Program (AGP), serve to enrich curricular and research opportunities for nursing faculty and students.

The Bachelor of Science in Nursing at Elon University is designed as a prelicensure program which provides students with the knowledge, skills, experiences, and global thinking to succeed and thrive in today's ever-changing healthcare landscape. Students will demonstrate mastery of all aspects of the nursing process; communicate therapeutically to clients, their families within the healthcare setting; and provide safe, culturally appropriate, and sensitive care while adhering to the policies and procedures of the nursing profession and the healthcare system. This program provides students with a foundational knowledge base, enabling client-centered care across the lifespan and the health-wellness-illness continuum. Didactic coursework and clinical rotations challenge students to raise the bar of the nursing profession.

The Department of Nursing is seeking National League for Nursing (NLN) Commission for Nursing Education Accreditation (CNEA). We will have a site visit in November 2023 to obtain this accreditation. The department received formal approval from the NC Board of Nursing on May 18, 2023.

Philosophy:

Elon University's distinctive reputation for high impact practices, our commitment to inclusive excellence, and our rich liberal arts foundation will help us prepare nurses that will have an impact in their practice and in their community. Elon nurses are committed to the reduction of health disparities rooted in intercultural humility, racial and gender equity, and religious literacy, attending to each client they serve with care and respect for their individual history and immediate needs. Elon nurses are dedicated to evidence-based practice, pursuing efficacious and cost-effective interventions that will positively impact the future of healthcare.

Purpose:

The Bachelor of Science in Nursing at Elon University prepares nurses who are committed to local and global health equity, demonstrating the ability to think broadly, critically, and creatively to optimize client-centered care. Students experience a progressive nursing curriculum including focus on community-based, population health; reduction of health disparities; and health informatics to optimize outcomes.

Coursework is closely aligned with clinical experiences in multiple settings, including the opportunity for hands-on learning in diverse and international settings. Graduates will guide the transformation of healthcare towards a value-based model centered in communities. Agile in population-level data and fiscally minded, Elon nurses will optimize healthcare quality and outcomes.

Mission:

The mission of EUDON mirrors that of the Elon University's Program of Health Sciences to develop dedicated and empathetic healthcare professionals through experiential and engaged learning. We will be recognized for scholarly and clinical excellence and for creating a positive impact in our local and global communities.

Vision:

The Department of Nursing follows the vision of the Elon founders to "create an academic community that transforms mind, body, and spirit and encourages freedom of thought and liberty of conscience."

To fulfill this vision, Elon University, and the Department of Nursing acts upon these commitments:

- We nurture a rich intellectual community characterized by active student engagement with a faculty dedicated to excellent teaching and scholarly accomplishment.
- We provide a dynamic and challenging undergraduate curriculum grounded in the traditional liberal arts and sciences and complemented by distinctive professional and graduate programs.
- We integrate learning across disciplines and put knowledge into practice, thus preparing students to be global citizens and informed leaders motivated by concern for the common good.
- We foster respect for human differences, passion for a life of learning, personal integrity, and an ethic of work and service.

Values:

The Elon Department of Nursing embraces and affirms the stated core values of Elon University:

- **Honesty:** Be truthful in your academic work and in your relationships.
- **Integrity:** Be trustworthy, fair, and ethical.
- **Responsibility:** Be accountable for your actions and your learning.
- **Respect:** Be civil. Value the dignity of each person. Honor the physical and intellectual property of others.

Approval and Accreditation:

The baccalaureate degree in nursing at Elon University Department of Nursing is seeking accreditation by the NLN Commission for Nursing Education Accreditation (CNEA), The Watergate, 2600 Virginia Avenue, NW, Eighth Floor, Washington, DC 20037. A formal site visit for accreditation will occur in November 2023.

The pre-licensure tracks of the BSN program are approved by the North Carolina Board of Nursing.

Elon University is accredited by the Commission on Colleges of the Southern Association of Colleges and Programs to award bachelors, master's, and doctorate degrees. Contact the Commission on Colleges at 1866 Southern Lane, Decatur, GA 30033-4097 or call 404 679-4500 for questions about the accreditation of Elon University.

BSN Statement of Purpose

The Bachelor of Science in Nursing Program at Elon University prepares individuals to assume entry level, generalist professional nursing positions. The program creates an atmosphere in which the individual can develop knowledge, skills, and attitudes consistent with values-based practice and evidence-based care. A positive, supportive educational environment is provided to sustain and promote lifelong learning. The program provides the necessary background commensurate with pursuit of graduate nursing education.

BSN Student Learning Outcomes

1. Provide culturally sensitive, compassionate, and efficacious care for clients and families.
2. Demonstrate judicious and ethical decision-making that champions client dignity and health and upholds professional and workplace standards.
3. Conscientiously employ the nursing process to manage and justify client care delivery.
4. Carefully monitor and manage changing client conditions to ensure optimal care.
5. Utilize current evidence to guide the nursing process and enhance nursing practice.
6. Carefully collect and analyze client data to support choice of interventions, using informatics and technology as essential tools to monitor outcomes.
7. Demonstrate a sustained commitment to continuous quality improvement and safety in nursing practice.
8. Focus on clear communication as leaders of an interprofessional team, willingly addressing conflict to ensure client-centered care.
9. Consistently engage in wellness, self-care, and stress management strategies to develop resiliency and maximize job satisfaction.
10. Pursue professional development to enhance nursing performance and positively impact client outcomes.

Program Outcomes:

1. Coursework and clinical experiences dedicated to excellence in nursing practice and client-centered care for all people throughout their lifespan and across the health-wellness-illness continuum.
2. Intensive simulation experiences, including high-fidelity manikins and standardized patients, with embedded formative and summative evaluations.
3. Focus on community health nursing with emphasis on health promotion, health maintenance, and disease prevention among populations.
4. Commitment to health equity, with comprehensive analysis of the impact of disparity and diversity within healthcare.
5. Community-driven, health-related service-learning in collaboration with a local or global community partner/organization.
6. Development of effective and empathetic communication skills, including strategies for sharing difficult news, engaging in difficult conversations, listening actively, and being emotionally present.
7. Pursuit of evidence-based nursing practice, including the location, critical appraisal, translation, and contributions to the scholarly foundation of nursing as a discipline.
8. Responsibility towards professionalism and management of nursing practice, including nursing policy and regulation, quality improvement, safety, and the use

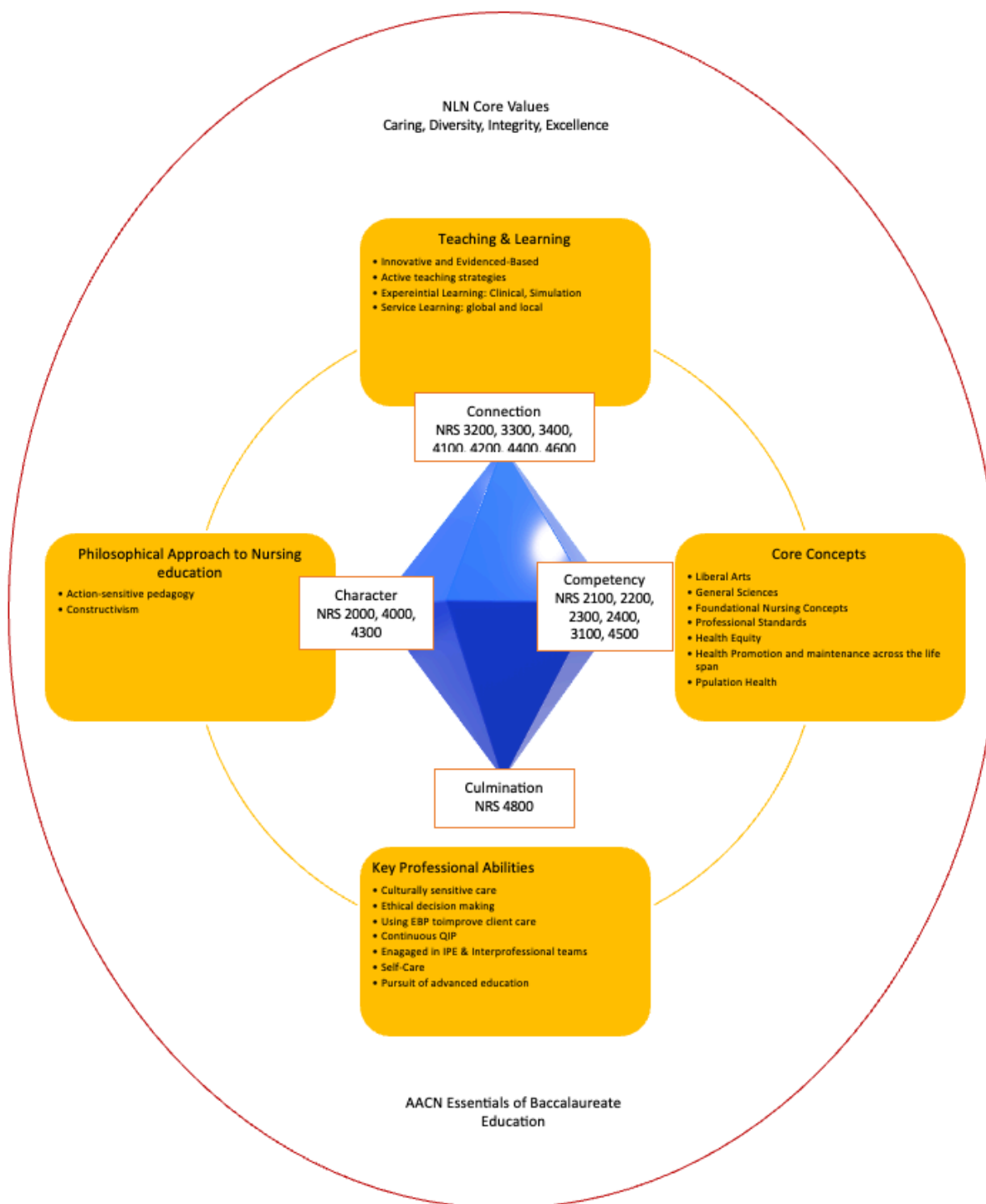
of informatics/technology to optimize outcomes.

9. Focus on effective communication, collaborative participation, and a keen understanding of the nurse's role as part of an interprofessional team.
10. Creation of personal wellness habits in healthcare providers, including development of resiliency and commitment to life-long self-care.

BSN Curriculum Framework

The action-sensitive pedagogy philosophical approach to nursing education combined with constructivism, creates holistic thinking, caring, and political advocacy through patterns of knowing, curiosity, diversity, and mentoring. Combined with a constructivist approach to nursing education, the department creates a learning environment designed to connect knowledge and learning and foster new understandings of concepts between and among students, teachers, clients, and community. A learning community for both students and faculty is fostered through innovative teaching practices. The curriculum progresses from simple to complex, mirroring Benner's novice to expert concept. The curriculum is built on a foundation of professional standards revised and updated to reflect societal and health care trends. The EUDON uses the American Association of Colleges of Nursing (AACN) the Essentials of Baccalaureate Education for Professional Nursing Practice, 2021 and the National League for Nursing (NLN) Hallmarks of Excellence in Nursing Education Model. The curriculum is designed to provide students with a foundational knowledge base, enabling client-centered care across the lifespan and the health-wellness-illness continuum. Didactic coursework and clinical rotations will challenge them to raise the bar of the nursing profession for innovative care. The curriculum is designed to create nurses who will be committed to the reduction of health disparities rooted in intercultural humility, racial and gender equity, and religious literacy, attending to each client they serve with care and respect for their individual history and immediate needs.

The 4 C's of an Elon Nursing Degree



TRADITIONAL BACHELOR OF SCIENCE IN NURSING CURRICULUM GUIDE

		YEAR ONE			
Fall	Hrs.	Winter	Hrs.	Spring	Hrs.
CORE: ENG 1100	4	CORE: Expression	4	CORE: COR 1100	4
CORE: STS 1100 or 2120	4			CORE: World Lang 1010/1020	4
CORE: BIO 1112/1113	4			BIO 2312/2313	4
CORE: PSY 1000	4			NRS 2000 - Healthcare Relationships I: Disparity, Diversity, Equity, and Inclusion	4
ELN 1110/NRS 1100	1				
<i>Total</i>	17	<i>Total</i>	4	<i>Total</i>	16
		YEAR TWO			
Fall		Winter		Spring	
BIO 2412/2413	4	CORE: Civilization	4	CORE: Expression	4
CORE: Society	4			PSY 2100	4
NRS 2100 - Foundations of Nursing	6			PEH 3240	4
<i>World Lang 1020 (if needed)</i>	4			NRS 2200 - Assessment of Health and Wellness for Nursing Practice	4
<i>Total</i>	14-18	<i>Total</i>	4	<i>Total</i>	16
		YEAR THREE			
Fall		Winter		Spring	
BIO 2122	4	CORE: Adv Studies	4	CORE: Adv Studies	4
NRS 2300 - Principles of Physiology and Pathophysiology for Nursing Practice	3			NRS 3200 - Family-Centered Nursing Care for Infants, Children and Adolescents	4
NRS 2400 - Pharmacology for Nursing Practice	3			NRS 3300 - Gerontological Nursing	2
NRS 3100 - Nursing Management of Adults I	6			NRS 3400 - Multiple Perspectives in Mental Health	4
<i>Total</i>	16	<i>Total</i>	4	<i>Total</i>	14
		YEAR FOUR			
Fall		Winter		Spring	
NRS 4000 - Preparatory Seminar: Healthcare Relationships II	1	NRS 4300 - Healthcare Relationships II: Disparity, Diversity, Equity, and Inclusion	4	NRS 4100 - Evidence-Based Nursing Practice	4
NRS 4200 - Population and Community Health	4			NRS 4600 - Crucial Conversations in Healthcare	2
NRS 4400 - Reproductive Health	4			NRS 4800 - Pathways to Practice	4
NRS 4500 - Nursing Management of Adults II: Complex Health Conditions	6			CORE: Elon Core Capstone	4
<i>Total</i>	15	<i>Total</i>	4	<i>Total</i>	14

Blue: Nursing Courses Green: Prerequisites Yellow: Elon Core Courses

ACCELERATED BACHELOR OF SCIENCE IN NURSING (ABSN) CURRICULUM GUIDE

Fall I	Credit Hours	Clinical Hours
NRS 2100: Foundations of Nursing	6	40
NRS 2200: Assessment of Health and Wellness for Nursing Practice	4	40
NRS 2300: Principles of Physiology and Pathophysiology for Nursing Practice	3	
NRS 2400: Pharmacology for Nursing Practice	3	
TOTAL	16	80

Winter Term I	Credit Hours	Clinical Hours
NRS 2000: Healthcare Relationships I: Disparity, Diversity, Equity and Inclusion (40 Hours of Service Learning Required)	4	
TOTAL	4	

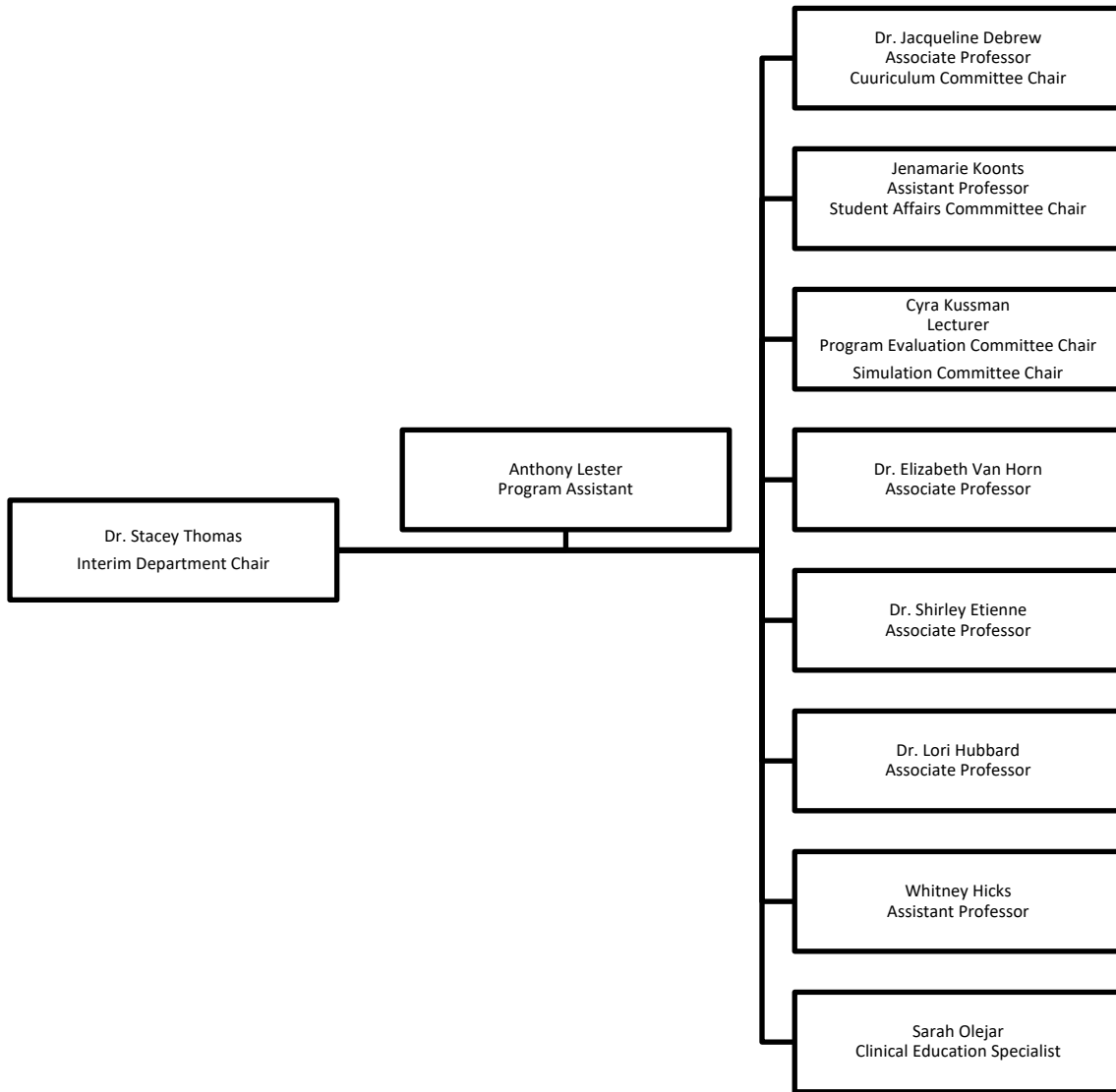
Spring I	Credit Hours	Clinical Hours
NRS 3100: Nursing Management of Adults I	6	80
NRS 3200: Family-Centered Nursing Care for Infants, Children and Adolescents	4	40
NRS 3300: Gerontological Nursing	2	
NRS 3400: Multiple Perspectives in Mental Health	4	40
NRS 4000: Preparatory Seminar: Healthcare Relationships II	1	
TOTAL	17	160

Summer I	Credit Hours	Clinical Hours
NRS 4100: Evidence-Based Nursing Practice	4	
NRS 4200: Population and Community Health	4	40
NRS 4300: Healthcare Relationships II: Disparity, Diversity, Equity and Inclusion (56 Hours of Service Learning Required)	4	
TOTAL	12	40

Fall II	Credit Hours	Clinical Hours
NRS 4400: Reproductive Health	4	40
NRS 4500: Nursing Management of Adults II: Complex Health Conditions	6	80
NRS 4600: Crucial Conversations in Healthcare	2	20
NRS 4800: Pathways to Practice	4	120
TOTAL	16	260
CURRICULUM TOTAL	65	540

* Courses built for co-learning across disciplines

Department of Nursing Organizational Chart 2023-2024



Elon University's Honor Code

Elon University recognizes and affirms the importance of character development and personal responsibility as essential elements of an Elon education. Students are expected to uphold the four values listed below for themselves and others in their decisions and day-to-day interactions. Conduct affirming these four values should be followed in all settings, including in and out of the classroom, on- and off-campus, and in all domestic and international sites during study abroad or course-related study experiences. Upon graduation, students are expected to have demonstrated their commitment to academic excellence and honor.

Every member of Elon University has the right to live and learn in an atmosphere of trust and support. Responsibility for maintaining these values in our community rests with each individual member. Values that promote this atmosphere include:

HONESTY: Be truthful in your academic work and in your relationships.

INTEGRITY: Be trustworthy, fair, and ethical.

RESPONSIBILITY: Be accountable for your actions and your learning.

RESPECT: Be civil. Value the dignity of each person. Honor the physical and intellectual property of others.

Elon's Honor Pledge

"On my honor, I will uphold the values of Elon University: honesty, integrity, responsibility, and respect."

The honor pledge is an abbreviated form of the honor code. By accepting admission to Elon University, all students indicate their willingness to subscribe to and be governed by the Honor Code and the Student Code of Conduct, which reflect the values of the Elon community. When students join the Elon Community, they sign the honor pledge to affirm their intent to adhere to these values and to conduct themselves in accordance with these rules. Students may be asked to affirm their commitment to these values by signing the Honor Pledge on papers, tests, assignments, and other documents when requested. The honor code is printed on signs in classrooms and residence halls throughout campus.

The Honor Code Handbook outlines the University process and procedures for both community and academic violations. A complete copy of the Honor Code Handbook is available at:

<https://www.elon.edu/u/student-conduct/honor-code/>

Nursing Student Organizations

NSNA

The National Student Nurses' Association (NSNA) mission is to mentor students preparing for initial licensure as registered nurses, and to convey the standards, ethics, and skills that students will need as responsible and accountable leaders and members of the profession. The nursing student affairs committee is working with the student government association (SGS) to establish a local chapter of NSNA here at the university.

<https://www.nsna.org/about-nsna.html>

Elon Resources

The following are examples of resources available to students at Elon University Department of Nursing. For additional resources, please check Elon's website (<https://www.elon.edu/>) or ask your academic advisor.

Barnes & Noble at Elon University

Barnes & Noble at Elon University is an Elon student's source for textbooks, Program supplies, Elon apparel, novelties, and gift items. The bookstore stocks required textbooks and class materials. For students' convenience, the bookstore has an active online ordering system.

(<https://elon.bncollege.com/>)

Center for Access and Success

The value of community and our concern for the common good underpin our decision to create **The Center for Access and Success at Elon University**. The purpose of The Center is to help students from all backgrounds to have access to and succeed in higher education. We serve individuals in our Elon University community and our surrounding communities from pre-K to adults through our current initiatives: *It Takes a Village Project, Elon*

Academy, Odyssey Program, and First-Generation Student Support Services.

(<https://www.elon.edu/u/academics/access-and-success/>)

CREDE

The Center for Race, Ethnicity, & Diversity Education

Mission:

To advance the conversation on student diversity education campus-wide and to develop intercultural competence while providing race and ethnicity related advocacy, services, and programs to faculty, staff, and students, particularly those from underrepresented and historically marginalized communities.

Vision:

To become a premier contributor to creating a campus where all members exercise inclusion and individuals flourish.

Goals:

- To create an inclusive campus environment for underrepresented and historically marginalized racial and ethnic students, faculty, and staff.
- To foster in students a deeper understanding of and pride in their respective identities and appreciation and respect for other identities.
- To serve as the central diversity education resource for cultivating, in all Elon students, greater activism toward inclusion and social justice on campus and beyond.
- To provide faculty and staff with resources to perform their roles in a sound intercultural manner.

Belk Library

The Carol Grotnes Belk Library advances the culture of engaged intellectual inquiry at Elon University. Our commitment to innovative service and dynamic partnerships enables our diverse community of learners to excel in their lifelong scholarship and artistic pursuits. We provide expertise, collections, and spaces to meet and anticipate the evolving information.

(<https://www.elon.edu/u/library/about/>)

Information Technology Services

Information Technology (IT) works collaboratively with the Elon community to provide technology, leadership, and support on campus. Each day, our department works to develop and enhance the technology experience for students, staff, and faculty members of Elon University. We are committed to meeting the needs of all university members and exceeding expectations whenever possible.

(<https://www.elon.edu/u/fa/technology/>)

E-Alert

Elon University's E-Alert notification system enables officials to send urgent news to your cell phone. Elon can text your cell phone and email you timely information about emergencies, class cancellations and important weather updates.

To receive these emergency messages, you must include your cell phone number in your OnTrack user profile (see directions in link below). Your personal information will be used solely for selected notifications and will not be released. The E-Alert service is free.

Depending on your personal cell phone plan, text messaging rates may apply.

(<https://www.elon.edu/u/fa/police/e-alert-rave/>)

Mail Services

Mail Services is the distribution hub for all incoming and outgoing mail, as well as inter-campus mail. As an official USPS unit, we offer many of the services you have come to expect from USPS such as Express Mail, Priority Mail, Certified Mail, and Insured Mail.

(<https://www.elon.edu/u/fa/auxiliary-services/mail-services/>). Acceptable payment methods include cash and Phoenix cash.

Student Financial Services

All students who have filed a FAFSA are eligible to have their FAFSA examined for changes to their account for loss of family income due to the COVID-19 pandemic, according to an additional provision of the HEERF III legislation. The 2022 FAFSA is based on 2020 income and asset information, which predates the onset of COVID-19. If you or your family have had a change of financial circumstances that has affected your financial situation, please contact the Office of Financial Aid at finaid@elon.edu, so we may determine if more information is needed that would make you eligible for adjustments to your FAFSA.

Adjustments to your FAFSA create eligibility for new or increased federal and/or state need-based aid. Elon does not have institutional funding to make any increases to your financial aid. (<https://www.elon.edu/u/admissions/undergraduate/financial-aid/tuition-and-aid/>)

Student Health and Wellness

As proposed by the Wellness and Wellbeing Task Force in 2018 and adopted by the Executive Committee of the Council on Wellness and Wellbeing in 2019, the following is the guiding mission and model for Elon University Wellness:

Elon University is committed to fostering an institutional culture of holistic wellness where everyone can transform their mind, body, and spirit. By providing access to resources, educational tools, and support, we will empower each member of our

community to cultivate personal wellness values that will last throughout and beyond their time at Elon.

Dimensions of Wellbeing: Holistic wellness is defined as a process of striving for one's full potential across six dimensions of well-being, based on the Gallup Well-Being Index with emotional well-being added as a sixth dimension:

- Community well-being
- Emotional well-being
- Financial well-being
- Physical well-being
- Purpose well-being
- Social well-being

<https://www.elon.edu/u/health-wellness/>

Disabilities Resources

Elon University is committed to the principle of equal opportunity. One of the ways we express our commitment is in our efforts to accommodate qualified students with disabilities as they face the challenges of university life. Faculty, staff, administrators, and students work together to find approaches and accommodations that enable students to benefit from the variety of programs and activities on campus.

The mission of Disabilities Resources is to support a diverse population of students with disabilities, providing them with appropriate and equal access to the University's curricula, buildings, programs, and other services.

To accomplish our mission, we:

- Work with students on a case-by-case basis, determining appropriate services and reasonable accommodations.
- Work with faculty to ensure their understanding and implementation of student accommodations.
- Work to connect students and faculty with appropriate resources.
- Work with University partners to increase awareness and provide equal access for all Elon students, faculty, and staff.

Location and Contact Information

Disabilities Resources is in Belk Library 226.

Contact:

Phone: (336) 278-6568

Email: disabilities@elon.edu

EUDON Ceremonies

White Coat Ceremony

The White Coat Ceremony is an iconic ritual that emphasizes compassionate, collaborative, scientifically excellent care from the very first day of training in the healthcare professions. The Gold Foundation established this tradition in 1993 at Columbia University to highlight the importance of humanism in all patient care. For 30 years, the Foundation has seeded White Coat Ceremonies at medical Programs and, starting in 2014, White Coat/Oath and Pledge Ceremonies at nursing Programs, around the globe. The White Coat Ceremony for both traditional BSN and ABSN students is held each fall.

Pinning Ceremony

New nurses receiving their program pins is a time-honored tradition which signifies a rite of passage into the nursing profession. The pin is a symbolic representation of the program and of the Elon Department of Nursing.

This ceremony is held twice a year for graduating students (ABSN December/BSN April). Awards are also presented at this ceremony.

Commencement

Commencement is held twice a year for our nursing students. ABSN students graduate in December and are a part of the School of Health Sciences graduation. BSN students graduate in May during the Diploma ceremony for the Dr. Jo Watts Williams School of Education and Elon College, The College of Arts and Sciences. Additional details on all the commencement ceremonies may be found at <https://www.elon.edu/u/academics/commencement/>.

BSN Awards

The EUDON faculty in collaboration with Student Affairs committee will establish the criteria for recognition at the pinning ceremonies. Awards may include recognition of outstanding achievements for academic, clinical, and research excellence.

Dean Rebecca Neiduski Leadership Award

This award was established by the Department of Nursing to recognize Dr. Rebecca Neiduski for outstanding leadership in the School of Health Sciences and for establishing the Bachelor of Science in Nursing degree at Elon University in January 2021. The Dean Rebecca Neiduski Leadership Award will be presented annually to a senior nursing student who has demonstrated excellence, integrity, advocacy, and innovation in leadership.

To nominate a student for the award, a letter should be sent to the department director that addresses how the student meets each of the defining characteristics. Nomination letters should be turned in to the department chair by the Monday following Fall Break. Nomination letters will then be reviewed by a faculty committee that will determine the winner.

Academic Policy Numbers

[Elon Department of Nursing Policies](#)

[Pre-licensure BSN Policies](#)

Students are responsible for knowing and adhering to the policies as described below.

BSN Students (Accelerated Track; Traditional Track)
Policy Numbers 1 – 35
Policy Numbers 36 – 45

Title of Policy No. 1: Confidentiality

Date Effective: 8/21

Date Reviewed: 7/23

Date Revised: 8/22

Policy:

Nursing students have access to data of a sensitive nature. Students are expected to abide by the Health Insurance Portability and Accountability Act (HIPAA) and the Family Educational Rights and Privacy Act (FERPA).

Misuse of health information includes but is not limited to the following:

- Accessing medical record information about any client by someone not assigned to care for them.
- Discussing a particular client's case in an inappropriate location, such as in a public location or on social media.
- Removing confidential data from the clinical site in any format, such as any portion of the medical record or chart, daily worksheets, care plans, or report documents.

Misuse of educational information includes but is not limited to:

- Recording or videotaping an educational experience without permission.
- Disclosing any information regarding the performance of peers in all educational settings.

Students must regard their Elon ID badge and/or agency identification badge and technology password as equivalent to a personal signature (identification) and it should be protected as such. Lending or using an ID badge or password belonging to someone else is prohibited.

Any student who witnesses or suspects a breach of any confidentiality policy is expected to report the incident to his/her instructor or academic advisor.

Students who violate the confidentiality policy will be subject to discipline up to and including dismissal from the program and criminal charges for any additional consequences related to a HIPAA violation.

Procedure:

Students sign the Elon Department of Nursing Confidentiality Agreement located in the CastleBranch compliance material before matriculation into the program. Students who do not sign the confidentiality agreement will not participate in clinical experiences.

If warranted, students will receive a copy of a clinical agency's policy on confidentiality and will be required to sign a copy of the agency's confidentiality agreement. This form will be retained as per the clinical agency's direction. Students are required to follow the more restrictive policy.

Title of Policy No. 2: Client and Family Photography**Date Effective: 8/21****Date Reviewed: 7/23****Date Revised: 8/22****Policy:**

Photographing a client or their family members without written permission is a violation of HIPAA and EUDON policy. No faculty or student may photograph anyone in any facility by any means when working or studying under the auspices of the Elon Department of Nursing.

Procedure:

Students who violate this policy will be subject to disciplinary action up to and including dismissal from the nursing program and any additional consequences related to a HIPAA violation.

To obtain written permission, please see EUDON forms and appendix at the end of the student handbook.

Title of Policy No. 3: Student Medical Forms

Date Effective: 8/21

Date Reviewed: 7/23

Date Revised: 8/22

Policy:

Evidence of physical and emotional health that will enable the applicant to provide safe nursing care to the public is required for admission to, progression within, and graduation from the nursing program. Student medical forms are provided by Elon University Student Health and must be completed by a physician, physician assistant, or nurse practitioner. Students must also adhere to Technical Standards Policy No. 11.

State law requires all students entering college in the state of North Carolina to meet certain immunization requirements. The clinical agencies used for student practice may request additional immunizations as noted in the student medical forms. All immunization and an annual tuberculosis screening must remain up to date during enrollment. If these requirements are not met, students shall not attend clinical or complete any practicum hours.

Procedure:

Students shall submit the required material as specified in the policy.

Refer to the Clinical Requirements and Deadline policy for further instruction.

Title of Policy No. 4: Clinical Requirements and Deadlines

Date Effective: 8/21

Date Reviewed: 7/23

Date Revised: 8/22

Policy:

Students are responsible for maintaining continuous compliance, including requirements that need updates or renewal. Students must follow all requirements to participate in clinical experiences. Clinical experiences include Nursing Simulation Center clinical days and off-campus clinical agency experiences.

Students who are not in compliance with any element, including renewal or updates of previously submitted items (tuberculosis screening, CPR, immunizations, agency orientation, or policy documents, etc.) may not participate in clinical experiences and will receive a grade of unsatisfactory for each missed experience. Missed clinical days due to non-compliance are designated as unsatisfactory performance and could impact a student's ability to pass the clinical component of the course.

The deadlines apply to the following items, including but not limited to:

- Student Medical Forms
- Immunizations/vaccines and boosters
 - Tuberculosis Quantiferon Gold or T-spot blood test
 - Annual Flu vaccine
 - Covid-19 Vaccination (2 doses)
 - MMR series (2 doses)
 - Varicella (2 doses)
 - Hepatitis B series (3 doses)
 - Tdap (must be less than 10 years old)
- Drug Screen
- CPR certification – initial and renewal
 - Must be American Heart Association for Healthcare Providers
- Agency orientation and safety training
- **Additional items designated by the EUDON or clinical agencies***

Deadlines may be revised, and additional items may be required by the EUDON or clinical agencies at any time. Students will be notified of revisions and additional requirements via their university email account.

Students must submit all required items in sufficient time to receive approval by CastleBranch and the agency specific portal. Please note that the approval process may take several weeks, so items must be submitted well before the following deadlines.

****The clinical agency reviews compliance material and makes the final decision to allow a student's participation in clinical experiences at that agency. If a clinical agency denies permission to participate in clinical experiences, the program is under no obligation to provide alternate experiences and the student may be dismissed from the program.**

Students retain access to their CastleBranch account during and following enrollment in the EUDON program.

Procedure:

- Students must submit all required items in sufficient time to receive approval by CastleBranch. Please note that the approval process may take several weeks; therefore, items must be submitted well in advance of the following deadlines. If the deadline falls on a weekend or holiday, the deadline will be extended to the next University business day.
- Undergraduate students beginning clinical coursework and returning out-of-sequence students follow the deadlines below:

Semester enrolled in coursework	Compliance material approved by:
Fall semester	July 15 for BSN, ABSN
Spring semester	December 1 for BSN, ABSN
Summer semester	April 15 for ABSN

- If required materials are not approved by CastleBranch by the stated deadline students may have their offer of admission/reenrollment withdrawn or registration administratively withdrawn.

****Notice regarding medical and/or religious exemptions:** Although the Department of Nursing at Elor is a direct entry program, students should knowingly enter the program with the understanding that they must adhere to the clinical requirements set forth by each of our clinical partners **EACH** semester. Exemption status granted by the University does not mean our clinical partners will accept the exemption status. If a student does not meet the clinical requirements as set forth by the clinical partners, the student will be required to withdraw from the program if they refuse to meet the vaccine requirements.

Title of Policy No. 5: Tuberculosis Screening

Date Effective: 8/21

Date Reviewed: 7/23

Date Revised: 8/23

Policy: While enrolled in the Elon Department of Nursing, all students are required to maintain annual tuberculosis screening. Students who fail to submit the required documentation shall not attend clinical. Missed clinical days due to non-compliance are designated as unsatisfactory performance and could impact a student's ability to pass the clinical component of the course. All results are reported to clinical agencies, per the affiliation agreement or by request of the clinical agency. The requirements are based on CDC requirements for healthcare workers.

(<https://www.cdc.gov/tb/topic/testing/healthcareworkers.htm>)

Procedure:

One of the following is required:

- QuantiFERON Gold blood test (lab report required) **OR**
- T-Spot blood test (lab report required)

If positive results, **ALL** the following are required:

- Clear Chest X-ray (lab results required) **AND**
- Symptom free TB questionnaire **AND**
- Physician clearance documented on letterhead

The renewal date will be set for 1 year. Upon renewal, one of the following is required:

- QuantiFERON Gold blood test (lab report required) **OR**
- T-Spot blood test (lab report required)
- If **PREVIOUS** positive results, **ALL** the following are required
 - Clear Chest X-ray (lab results required) **AND**
 - Symptom free TB questionnaire **AND**
 - Physician clearance documented on letterhead

Note to students: Clear chest x-ray, TB questionnaire, and physician clearance must be completed within 3 months of starting clinical assignment.

Clinical sites may have additional requirements. Students must meet the requirements of the site where they complete clinical.

Students shall submit the required material as specified.

Students receive annual TB education via the Core Orientation.

Refer to the Clinical Requirements and Deadline policy for further instruction.

Title of Policy No. 6: Drug Screen

Date Effective: 8/21

Date Reviewed: 7/23

Date Revised: 8/22

Policy:

Consistent with healthcare practice regarding a drug-free environment, all clinical students in participating educational programs must provide documentation of a negative (urine) drug screen based on current requirements of clinical agencies by the designated deadline. The urine must be collected and processed using a NIDA (National Institute on Drug Abuse) approved laboratory. Testing must be done through CastleBranch, using one of their approved labs. Chain of custody in handling of the specimen must be maintained.

Students readmitted to the EUDON after a leave of absence or withdrawal must repeat the drug screen before reenrollment.

For a positive drug screen:

Legal drugs: Valid prescription must be provided for any positive report. Medical Review Officer (MRO) review may be required at the facility level.

Illegal drugs: Clinical access denied by specific facility protocol.

Negative-Dilute or Out of Range Results (temperature, specific gravity and/or creatinine): Retest required.

Results will be reported to clinical agencies, per the Affiliation agreement. Clinical agencies make the final determination of student eligibility to participate in clinical experiences at that site.

Students are subject to random or for cause screening at any time during a clinical experience in compliance with the agency policy. Random testing may be at student's expense and performed at labs designated by the clinical facility.

If students are charged of any crime related to substance use or abuse during their enrollment in the program, they must notify the Program Director within 48 hours, who will notify the clinical agencies. The agency will re-evaluate eligibility to participate in clinical experiences. Students who do not report being charged with a crime related to substance use or abuse may be dismissed from the program.

Procedure:

Students shall submit the required material as specified.

Refer to the Clinical Requirements and Deadline policy for further instruction.

Title of Policy No. 7: Criminal Background Check

Date Effective: 8/21

Date Reviewed: 7/23

Date Revised: 8/22

Policy:

Accreditation agencies require hospitals, childcare facilities, and other agencies/organizations to perform criminal background checks on all persons involved in direct patient care, which can include employees, volunteers, and students. Students are required to complete a criminal background check at their expense. Refusal to complete the self-disclosure or sign consent to conduct a background check will prevent the student from participating in the EUDON program. Criminal background results will be reviewed by the clinical agencies with whom we have agreements for clinical placement. Students may be asked to provide additional documentation regarding a positive background check as requested by the clinical agency. In many instances a prior criminal history will be revealed on a background check, even if it was expunged.

If students are charged of any crime during their enrollment in the program, they must notify the Program Director within 48 hours, who will notify the clinical agencies. The agency will re-evaluate eligibility to participate in clinical experiences. Students who do not report being charged with a crime may be dismissed from the program.

Procedure:

Results of all Criminal Background Checks will be reported to clinical agencies. Clinical agencies make the final determination of student eligibility to participate in clinical experiences at that site.

Students shall submit the required material as specified.

Refer to the Clinical Requirements and Deadline policy.

Clinical agencies may have additional requirements that will be addressed case-by-case and met for students to participate in clinical at the site.

Title of Policy No. 8: CPR Certification**Date Effective: 8/21****Date Reviewed: 7/23****Date Revised: 8/22****Policy:**

While enrolled in the Elon Department of Nursing, all students are required to maintain continuous CPR/basic life support certification for healthcare providers. Students will not be able to attend clinical if CPR is expired. The EUDON only accepts American Heart Association HeartCode ® BLS for Healthcare Providers.

Procedure:

Students shall submit the required material as specified.

Refer to the Clinical Requirements and Deadline policy for further instruction.

Title of Policy No. 9: Retention of Compliance Files

Date Effective: 8/21

Date Reviewed: 7/23

Date Revised: 8/22

Policy:

Compliance documents for students enrolled in the EUDON are retained by CastleBranch and by the agency required platform.

Procedure:

Students may access their compliance documents during and following enrollment in a EUDON program through their CastleBranch account.

Students enrolled in a EUDON program are responsible for all expenses to establish and maintain the CastleBranch account.

Title of Policy No. 10: Agency Orientation, Agency Policy, and Procedure Documents

Date Effective: 8/21

Date Reviewed: 7/23

Date Revised: 8/22

Policy:

Clinical agencies have agency specific orientation requirements. The Program Director or designee will instruct students to complete the appropriate agency orientation material for their clinical experience and will communicate the deadline for completion. Documentation as designated by each agency will be retained.

Procedure:

Students will upload all required material to their CastleBranch and agency specific portal account or submit it to the Program Director as directed.

Title of Policy No. 11: Technical Standards

Date Effective: 8/21

Date Reviewed: 7/23

Date Revised: 8/22

Policy:

The Bachelor of Science in Nursing degree is an undifferentiated degree attesting to general knowledge in, and the basic skills required for, practicing the full scope of nursing. The Department of Nursing strives to educate students to become competent and compassionate nurses capable of meeting all requirements for licensure and post-graduate work in nursing. In addition to classroom learning, clinical learning occurs throughout the program and involves considerations, including patient safety and clinical facilities, which are not present in the classroom. Essential abilities and characteristics required for completing this degree are certain minimum motor, sensory/observational, communication, cognitive, and professional/behavioral competencies. Therefore, the faculty has determined that certain technical standards are requisite for admission, progression, and graduation from the nursing program.

Standards

To acquire the knowledge and skills to function in the field of nursing, individuals must have abilities and skills in the following areas:

Motor

The student should have sufficient motor function to execute movements required to provide general care and treatment to clients in all health care settings.

The student must possess the motor skills necessary for assessment and therapeutic procedures such as inspection, palpation, percussion, auscultation, and other diagnostic maneuvers and procedures. Such actions require coordination of both gross and fine muscular movements, equilibrium, and functional uses of the senses of touch, vision, and hearing. The student must also be able to perform basic life support (including cardiopulmonary resuscitation), transfer and position clients, and position and re-position themselves around clients. The student must also be able to operate equipment typically found in the health care environment (IV pumps, cardiac monitor, and electric and manual blood pressure equipment, safe patient handling equipment, etc.).

Sensory/Observation

The student must be able to acquire information presented through demonstration and experience in the basic and nursing sciences.

The student must be able to observe the client accurately, at a distance and close at hand, and observe verbal and non-verbal communications when performing nursing assessments and interventions or administering medications. The student must be capable of perceiving the signs of disease and infection as manifested through physical examination including information that may be derived from visual

inspection and images of the body surfaces, palpable changes in various organs and tissues, and auditory information (patient voice, heart tones, bowel, and lung sounds, etc.).

Communication

The student must communicate effectively and sensitively with other students, faculty, staff, clients, family, and other professionals.

The student must be able to express his or her ideas and feelings clearly and demonstrate a willingness and ability to give and receive feedback in both the classroom and clinical settings. The student must be able to convey or exchange information to obtain a health history, identify problems presented, explain alternative solutions, maintain accurate records, and give directions during and post-treatment. The student must be able to effectively communicate in the English language with the ability to retrieve and record information from various sources including computerized data bases. The student must also be able to process and communicate information on the patient's status with accuracy in a timely manner to members of the health care team and exercise judgment to seek support and consultation in a timely and effective manner.

Cognitive

The student must be able to measure, calculate, reason, prioritize, analyze, integrate, synthesize information, and act with integrity and sound judgment. The student must sustain attention and memory to maintain client safety.

The student must be able to read and comprehend extensive written materials. The student must also be able to evaluate and apply information and engage in critical thinking in the classroom, lab, and clinical setting within the time constraints unique to each setting.

Professional Conduct/behavior

The student must be able to exercise sound professional judgment and practice nursing ethically.

In addition to adhering to the Elon honor code, the student must abide by professional standards of practice. They must possess attributes that include compassion, empathy, altruism, integrity, honesty, responsibility, and tolerance. The student must be able to engage in client care delivery in all settings and be able to deliver care to all client populations including but not limited to children, adolescents, adults, individuals with disabilities, medically compromised clients, and vulnerable populations. The student must be able to maintain mature, sensitive, and effective relationships with clients, students, faculty, staff, and other professionals under all circumstances, including highly stressful situations. They must be able to function effectively under stress, adapt to an environment that may change rapidly without warning and/or in unpredictable ways, and function cooperatively and efficiently in the face of uncertainties inherent in clinical practice. The student must be able to experience empathy for the situations and circumstances of others and effectively communicate that empathy. They must know how their own values, attitudes, beliefs, emotions, and experiences affect their perceptions and relationships with others. The student must possess skills and experience necessary for effective and harmonious relationships in diverse academic and work environments.

Reasonable Accommodations for Qualified Individuals with Disabilities

Elon University, the School of Health Sciences and the Department of Nursing are committed to the principle of equal opportunity and providing educational opportunities to otherwise qualified individuals with disabilities. A “qualified individual” with a disability is one who, with or without reasonable accommodations, meets the academic requirements and these Technical Standards. Students wishing to request reasonable accommodations should contact <https://www.elon.edu/u/academics/koenigsberger-learning-center/disabilities-resources/>. to initiate the process.

References

- American Nurses Association, Inc. (2015). *Code of Ethics for Nurses*. Retrieved from:
<http://www.nursingworld.org/MainMenuCategories/EthicsStandards/CodeofEthicsforNurses>
- American Nurses Association, Inc. (2015). *Nursing Scope and Standards of Practice* (3rd Ed.). Retrieved from:
<http://www.nursingworld.org/MainMenuCategories/ThePracticeofProfessionalNursing/NursingStandards>
- HIPAA Administrative Simplification 45 C.F.R., Parts 160, 162 and 164 (2009). Retrieved from:
<http://www.hhs.gov/ocr/privacy/hipaa/administrative/privacyrule>
- Southern Regional Education Board (2014). *The Americans with Disabilities Act: Implications for Nursing Education*. Retrieved from: <http://www.sreb.org/publication/americans-disabilities-act>

Core Performance	Standard	Examples of Necessary Activity (not all-inclusive)
General Abilities	The student must be able to observe a client accurately at a distance and at close range. In addition, a student must be able to respond promptly to urgent situations that may occur during clinical practice activities	<ul style="list-style-type: none"> • Possess the ability to perceive pain, pressure, temperature, position, equilibrium, and movement. • Possess functional use (with or without use of adaptive device) of the senses of vision, touch, hearing, taste and smell so that data received by the senses can be integrated, analyzed, and synthesized in a consistent and accurate manner.
Motor Abilities	The student must be able to demonstrate manual dexterity, gross, and fine motor abilities sufficient to provide safe and effective nursing care in the clinical setting.	<ul style="list-style-type: none"> • Execute movements (pushing, pulling, extending, rotating, bending, etc.) to provide general and emergency care (for example but not limited to, the ability to perform CPR) in a timely manner, including the ability to maneuver small spaces and from room to room. • Physically endure assigned periods of clinical practice • Able to calibrate, operate, and maintain equipment. • Able to use sterile techniques, universal precautions, and personal protective equipment. • Possess the tactile ability sufficient to perceive changes and differentiate between structures, textures, and temperatures.

Sensory Abilities	Observation necessitates the functional use of all the senses. The student is expected to demonstrate sufficient abilities to allow the student to gather data from: the client, written reference materials, oral presentations, demonstrations, and observations of a client in the healthcare setting.	<ul style="list-style-type: none"> • Demonstrate sufficient capacity to perform health assessment and interventions; obtain diagnostic specimens and information from digital, analog and waveform representations of physiologic phenomena to determine a client's condition. • Be able to assess and intervene safely on the client's behalf.
Communication	The student must be able to effectively communicate and receive communication, both verbally and non-verbally and to respond. This requires the ability to see, speak, hear, read, write, and effectively utilize the English language.	<ul style="list-style-type: none"> • Elicit information, describe changes in condition, including mood, activity, and posture, and perceive nonverbal communications and communicate effectively and sensitively with patients. • Communication includes written and oral communication to clients, families, and members of the health care team.
Cognitive	The student must be able to learn, critically think, analyze, and solve problems sufficient for safe clinical judgment and a trusting relationship in the classroom and clinical setting.	<ul style="list-style-type: none"> • Gather complete data, develop a plan of action, establish priorities, monitor treatment plan, and identify safe alternatives in complex situations. • Make decisions under varying degrees of stress. • Ability to read, comprehend, and communicate detailed information in the English language.
Professional Conduct/behavior	The student must demonstrate professional behavior and refrain from actions that violate university, program, and agency policies. Additionally, students must conduct themselves consistent with the state board of nursing, the ANA Nurse Practice Act, and the ANA Code of Ethics for Nurses.	<ul style="list-style-type: none"> • Practice in a safe and competent manner. • Respect the dignity, culture, ethnicity, values, and beliefs of people receiving care and treatment, and of their colleagues. • Treat personal information obtained in a professional capacity as private and confidential in accordance with HIPAA and Elon/EUDON policies. • Provide impartial, honest, and accurate information in relation to nursing care and health care products. • Support the health, well-being, and



		<p>informed decision-making of people requiring or receiving care.</p> <ul style="list-style-type: none">• Promote and preserve the trust and privilege inherent in the relationship between nurses and people receiving care.• Maintain and build on the community's trust and confidence in the nursing profession.• Practice nursing reflectively and ethically.• Relate to clients, colleagues, faculty, and other health care professionals with integrity, honesty and without discrimination, prejudice, or intolerance.• Maintain sensitive, harmonious, and effective relationships with patients, faculty, colleagues, and other health care providers.
--	--	---

Title of Policy No. 12: Latex Reactions

Date Effective: 8/21

Date Reviewed: 7/23

Date Revised: 8/22

Policy:

When working in the Simulation Center and healthcare environment, the potential exists for exposure to latex and other allergens. Students and faculty members with a known sensitivity or allergy to latex are responsible for assessing their personal level of risk.

Procedure:

Students or faculty members with a known sensitivity or allergy to latex are responsible for:

- Consulting with their healthcare provider about the level of sensitivity, risks, and treatment.
- Requesting latex-free equipment when available.
- Informing the faculty member (or co-worker in the case of faculty sensitivity/allergy) of the plan to manage a reaction, including the location of your prescribed Epi-Pen.

Hypoallergenic gloves, glove liners, or powder-free gloves are not to be assumed to be non-latex or latex free.

Education will be provided in NRS 2100 Foundations regarding the types of reactions, levels and routes of exposures and common products containing latex.

Students and faculty in the Nursing Simulation Center or clinical setting shall report any signs and symptoms that might be indicative of latex allergy.

If a student or faculty member experiences any signs/symptoms of a reaction, emergency medical services (911) shall be contacted immediately. Students are responsible for the cost of transport and treatment.

In the event of an initial confirmed latex reaction, clearance must be obtained from a health care provider prior to re-entering the Nursing Simulation Center or clinical setting. Documentation of clearance from a healthcare provider on letterhead must be submitted to the Program Director.

Depending on the severity of a latex allergy, students may be eligible to seek accommodations through the Office of Disabilities Resources.

Title of Policy No. 13: Student Contact Information

Date Effective: 8/21

Date Reviewed: 7/23

Date Revised: 8/22

Policy:

Before the first day of each semester and upon any changes, students will be assured that the University and EUDON have accurate contact information. This includes phone number(s), emergency contact information, and local and permanent mailing addresses.

Faculty will communicate with students through their Elon E-mail. It is imperative that students routinely check their Elon email for important communications from faculty. Students needing to contact faculty should communicate through their Elon email. Faculty and staff will not respond to non-Elon email addresses.

Faculty will also use the Band application to communicate with students.

Procedure:

The student must maintain current and accurate contact information and addresses through OnTrack and with lead course faculty members.

Upon graduation, students requested an alternate email for alumni communication purposes.

Title of Policy No. 14: Infectious / Communicable Disease or Injury**Date Effective: 8/21****Date Reviewed: 7/23****Date Revised: 8/22****Policy:**

Faculty, staff with faculty rank, and students performing learning and instructional activities may engage in activities where exposure to blood or other potentially infectious materials is anticipated. Faculty, staff, and students are therefore considered to have the potential for occupational exposure. This includes activities on campus and at clinical or research sites. Likewise, faculty, staff with faculty rank, and students may participate in activities with the risk of injury.

Students will be instructed in clinical agency infection control guidelines before beginning patient care experiences in any new facility. Clinical agencies may have additional criteria that must be met by students and approved by the agency to participate in patient care experiences. The EUDON recognizes and accepts the variation in criteria between clinical agencies, and will hold students, faculty, and staff accountable, accordingly.

Students, faculty, or staff who have infectious/communicable disease are relieved of classroom/lab attendance and patient contact until they have been determined to be free of infection and/or present no risk to the health of classmates, employees, or patients. Students, faculty, or staff with an injury must be cleared by the clinical agency to participate in clinical experiences.

Students are responsible for the cost of treatment for any infectious/communicable disease or injury incurred during enrollment in a EUDON program and the cost of return to program/clinical testing or medical examinations as required by clinical agencies. Faculty and staff will follow the policies of the Elon Human Resource department. For additional information, refer to the Bloodborne Pathogen Exposure Control Plan.

The EUDON reserves the right to suspend class, laboratory, and clinical experiences in the event of an infectious or communicable disease outbreak or threat that may pose a danger to the students, faculty, or staff. University decisions about student participation in courses and clinical experiences will supersede those of the EUDON.

Procedure:

Faculty members may preclude a student from clinical experience if in the faculty member's judgment, the student's illness poses a potential health hazard to patients.

Students, faculty, and/or staff who have had an infectious/communicable disease may be required to provide written and dated clearance from a healthcare provider on official letterhead to return to clinical. This documentation should be submitted to the Program Director. Copies of clearance to return

to clinical may be provided to clinical agencies per affiliation agreement requirements or by request of the clinical agency.

Students, faculty, and/or staff who have recently traveled to areas with outbreaks of infectious/communicable disease, regardless of if they are showing symptoms, may be required to participate in a quarantine period until they are determined to be free of infection and/or no longer pose harm to others. Additional documentation from a healthcare provider indicating the student's ability to return to the public may be requested.

Faculty, staff, and students may be screened for signs and symptoms of infectious/communicable diseases prior to entering class, laboratory, or clinical experiences to ensure that they do not pose a risk to others. Refusal to participate in screening will prohibit participation in the class, laboratory, or clinical experience.

Faculty, staff, and/or students may be required to adhere to additional requirements during a class, laboratory, or clinical experience to maintain a safe working/learning environment that mitigates the risk of illness or injury. Failure to adhere to these requirements will prohibit participation in the class, laboratory, or clinical experiences and could be reported to the university as an Honor Code violation.

Any student who presents to a EUDON-sponsored event, gathering, or class that is experiencing symptoms of illness, will be directed by faculty or staff to self-isolate and/or seek medical attention until authorization to return is verified.

Students unable to attend class, laboratory, and clinical experiences due to exposure to infectious/communicable disease or injury should notify their faculty, and if indicated, Student Accessibility Services, as soon as possible after the diagnosis. Students shall work with their faculty to obtain coursework and make-up assignments. Students are responsible for initiating this conversation with faculty and maintaining the open flow of communication. Options for remote attendance to classes may be provided by the faculty within the constraints of the NC Board of Nursing and CNEA.

Title of Policy No. 15: Consent to Touch**Date Effective: 8/22****Date Reviewed: 7/23****Date Revised:****Policy**

Participation in hands-on laboratory activities is an essential component of health sciences education. In this program, you will be expected to participate in lab activities that involve touching and/or being touched by classmates, clients, and instructors. This touch should always be professional in nature and should follow the same principles of respect and sensitive practice applicable to in-patient care.

Procedure:

1. Explain any requested disrobing and intended physical contact.
2. Obtain consent before proceeding.
3. If any student has questions about physical interactions related to educational activities in your program, please contact the course instructor or program director.

Title of Policy No. 16: Transportation to and from Clinical Sites

Date Effective: 8/21

Date Reviewed: 7/23

Date Revised: 8/22

Policy:

Students are responsible for reliable transportation to and from their assigned clinical site. Requests for specific sites based on transportation needs of the student will not be honored.

Procedure:

Students who are late or absent due to transportation reasons will follow the program's policy for tardiness or absence.

Title of Policy No. 17: Inclement Weather

Date Effective: 8/21

Date Reviewed: 7/23

Date Revised: 8/22

Policy:

The EUDON will normally abide by the university's decision to cancel or delay classes due to inclement weather. Clinical faculty may cancel or delay clinical if travel conditions are or may become hazardous during the scheduled clinical time. This includes any course or clinical experience related to the Department of Nursing.

Procedure:

Students, faculty, and staff are notified of changes in the university class schedule by E-Alert.

All classes and clinicals will be cancelled in the event the university is closed.

The clinical faculty member is responsible for notifying the clinical unit if clinical is cancelled, including when the university is closed.

If the students are in the clinical setting when the announcement is made that the university is closed (or closing), students shall bring their clinical work to a close and will be dismissed by their clinical instructor as close to the university announced time as is possible.

If the clinical faculty is unable to safely travel to the clinical site, the faculty member's section may not participate in clinical. Students will be notified if the time is made up on an open clinical day.

Clinical faculty must pre-arrange a method to contact all students in their clinical group.

Decisions to cancel or delay clinical will normally be made, and students notified at least one and a half hours before the scheduled start time for clinical.

The clinical faculty member is responsible for notifying the Program Director that their clinical experience is cancelled or delayed. The initial notification may be by phone or text, but the faculty is responsible for sending an official notification to the Program Director via email.

At times, classes will be held when road and weather conditions may vary across the area.

The decision to travel to campus or clinical sites during inclement weather rests with the students and faculty members.

Students are responsible for academic work they miss due to these absences.

Students are responsible for notifying their clinical faculty if they feel they are unable to safely travel to the clinical site and must miss clinical. In this case, students are aware that this will result in a clinical absence. Absences for missed clinical in these circumstances cannot be made up.

Title of Policy No. 18: Student Parking (Campus & Clinical Sites)**Date Effective: 8/21****Date Reviewed: 7/23****Date Revised: 8/22****Policy:**

Students shall follow the Elon and clinical agency current parking regulations and display the proper vehicle permit or hangtag while parking on campus or at clinical facilities.

Procedure:

- Students at clinical sites will be directed to student parking locations by their clinical faculty member.
- Students may request a security escort to and from parking locations.
- Students are responsible for any fees associated with parking.

Title of Policy No. 19: Class/Clinical Attendance

Date Effective: 8/21

Date Reviewed: 7/23

Date Revised: 8/22

Policy:

Class Attendance:

Because students must attend classes regularly to derive maximum benefit from their courses, the university strictly and fairly enforces policies governing classes, and students are responsible for knowing attendance regulations. Each department establishes its own attendance policy. If unwarranted absences occur, the Provost/Vice President for Academic Affairs may suspend the student from the class or from the university. **Students who miss more than (2) class sessions are subject to disciplinary action by the program director and may result in an unsuccessful completion of the course. Students who arrive to class, lab, or clinical after the designated start time are considered tardy. Two (2) tardies equal one (1) absence. Students who arrive late or leave early are considered tardy for the day.**

Clinical Attendance

Attendance is mandatory for all scheduled clinical experiences, including those that occur in the IPE Simulation Center and at alternate clinical sites. Students must be present in clinical a sufficient period during the semester for determination of the student's consistent ability to meet the course learning outcomes. A clinical absence is defined as any day or partial day the student is not present in the clinical setting. The EUDON does not differentiate between excused or unexcused absences. Students are either present or absent. Clinical absences will be made up at the discretion of the course leader; make-up may include online clinical activities, alternate clinical days, or other means at the discretion of the course leader.

A clinical tardy is defined as not being present at the assigned time through the first 15 minutes of the scheduled clinical experience. Two (2) clinical tardy occurrences equal one clinical absence. It is the clinical faculty member's professional discretion if the student may participate in the clinical experience after a tardy arrival. If the student remains in clinical, their performance on that day will be evaluated as part of their course performance but will not negate the consequences of the tardy arrival.

In the event of unplanned clinical cancellation, such as but not limited to weather, faculty illness, or university closure, there will be no additional clinical time or alternate activity. The clinical time will not be "made up" or rescheduled and is not recorded as a student clinical absence.

Students who miss more than 20% of scheduled clinical hours (including simulation) may fail the clinical portion of the course, therefore resulting in failure of the course.

Procedure:

Class Attendance and Engagement

The instructional work of the Program is designed for regular attendance and participation. Students are expected to be present and on time for all class and clinical experiences. Students should notify the instructor by email or phone if they will be absent or tardy. Students will be responsible for any learning activity missed due to absence or tardiness. Students in hybrid and online classes are expected to actively participate in discussions and assignments. Students should refer to the syllabus for attendance requirements specific to the course.

Title of Policy No. 20: Substance Abuse**Date Effective: 8/21****Date Reviewed: 7/23****Date Revised: 8/22****Policy:**

The illegal use, and/or sale, or possession of narcotics, drugs, or controlled substances by a student at any time is grounds for dismissal from the nursing program.

The consumption of alcoholic beverages is not permitted while students are on Program assignments.

Students perceived as impaired and a potential danger to themselves, other students, employees, or patients will be removed from the site and disciplined according to established University policy.

The EUDON or clinical agency may require that the student submit to a random or for cause drug screen. Refusal to be tested is considered equivalent to a positive test. Students who refuse testing are prohibited from participating in clinical experiences. Each missed experience for this reason is considered unsatisfactory performance for that activity.

Procedure:

Any student violating the Substance Abuse Policy will be subject to disciplinary action ranging from temporary removal from clinical to dismissal from the nursing program and University sanctions.

Facilities requiring random or for cause drug screens may require students complete drug screens at their facility.

Title of Policy No. 21: Social Media**Date Effective: 8/21****Date Reviewed: 7/23****Date Revised: 8/22****Policy:**

If an online presence is established by a student, EUDON expects the student to maintain an ethical and professional digital citizenship aligning with the Elon Honor Code and all policies outlined in the current edition of EUDON Student Handbook. The posting of certain content, or participating in a post, can violate federal privacy laws, and EUDON policies, placing the student at risk of disciplinary action up to and including immediate dismissal from the EUDON. It is the intent of the EUDON to embrace the use of social media by students while protecting the public, the reputation of Elon and the EUDON, and following the letter and spirit of all applicable laws.

Procedure:

Students shall not:

- Participate in unacceptable online behaviors including cyberbullying, defamation, harassment, offensive content, aggressive behavior, or illegal activities.
- Write or post anything (text, video, and/or photographs) that would jeopardize the integrity of the EUDON or compromise a student's ability to work in a clinical setting.
- Engage in any disclosures (inadvertent or not) or the perception of disclosures in relation to any information protected by the Health Insurance Portability and Accountability Act (HIPAA).
- Share confidential information in any fashion; client privacy must be maintained. Offenses most pertinent to this discussion are those concerning the release of identifiable client demographics or any combination of identifiable facts that may jeopardize client's confidentiality; photography and/or video of any kind from the clinical setting; and release of any client information to any outlet.
- Partake in the "friending" of clients on social media websites. Students in client care roles should not initiate or accept friend requests (or the like) except in unusual circumstances such as the situation where there is an established relationship prior to the date of treatment.
- Comply with HIPAA regulations while on social networking sites. Violators are subject to the same prosecution as with any other HIPAA violations.
- Ensure that your social media activity does not interfere with your commitments while in class or in a clinical setting.
- Clearly indicate that you are speaking for yourself and not on behalf of Elon or the EUDON. In circumstances where your connection to Elon and/or EUDON is apparent, you should include a disclaimer such as: "The views expressed on this [blog; page; website] are my own and do not

reflect the views of Elon University Department of Nursing or the Elon Department of Nursing.”

Students shall:

Assume that everything you post, exchange, or receive on a social media site is public information even if you use privacy settings (determining who can view your page or profile, for instance).

Assume that your professional life and your personal life will merge online regardless of your effort in separating them.

Think before posting anything to a social media site. Using social media sites means that you (and the content you exchange) are subject to the online organization’s terms of service. There may be legal implications and your interactions could be subpoenaed by a third-party. The social media organization has access to and final control over everything previously disclosed on or through their service. Content may sometimes be handed over to law enforcement without the knowledge and notification of the user.

References

Cronquist, R., & Spector, N. (2011). Nurses and social media: Regulatory concerns and guidelines. *Journal of Nursing Regulation*, 2(3), 37-40.

HIPAA Administrative Simplification 45 C.F.R., Parts 160, 162 and 164 (2009). Retrieved from: <http://www.hhs.gov/ocr/privacy/hipaa/administrative/privacyrule>

National Council of State Boards of Nursing. (2011). White paper: A nurse’s guide to the use of social media. Retrieved from: https://www.ncsbn.org/Social_Media.pdf

Sharing Mayo Clinic. (n.d.). For Mayo Clinic Employees. Retrieved from: <http://sharing.mayoclinic.org/guidelines/for-mayo-clinic-employees/>

Spector, N. (2010). Boundary violations via the internet: Leader to leader. Retrieved from: https://www.ncsbn.org/L2L_Spring2010.pdf

Title of Policy No. 22: Temporary Removal from Class or Clinical**Date Effective: 8/21****Date Reviewed: 7/23****Date Revised: 8/22****Policy:**

A faculty member may remove a student from participating in any clinical experience for any reasons such as, but not limited to:

- Failure to meet technical standards.
- Suspected violation of substance abuse policy.
- Presenting physical or emotional problems which conflict with the safety essential to nursing practice (21 NCAC 36.0320 (d) (1).
- Demonstration of behavior which conflicts with the safety essential to nursing practice (21 NCAC 36.0320 (d) (2).
- Failure to demonstrate professional behavior, including honesty, integrity, and appropriate use of social media (21 NCAC 36.0320 (d) (3).

Procedure:

If a student demonstrates behaviors unfit for the clinical experience, the faculty will remove them from the area immediately.

Title of Policy No. 23: Student Practice Event Policy

Date Effective: 8/21

Date Reviewed: 7/23

Date Revised: 8/22

Policy:

The faculty of the EUDON strives to promote a learning environment in which students practice and provide care based on evidence, standards of practice, and professional values. When an event occurs in which a student fails to perform at the expected level of practice based upon their level in the program or the student compromises the values of EUDON or the nursing profession, the event will be assessed under the North Carolina Board of Nursing Just Culture philosophy.

Events related to academic cheating, confidentiality, inappropriate use of social media, fraud, theft, drug abuse, diversion, boundary issues, sexual misconduct, and mental or physical impairment are not subject to the Just Culture philosophy. These events will be addressed with the appropriate policies and procedures of EUDON or Elon University.

Procedure:

A Student Practice Event Report (located in the Forms section of the handbook) may be initiated by any faculty member when a student fails to meet the expectations of performance or behavior for a student at that level of any nursing program. Examples of events that may initiate a report are (but not limited to):

- Any event that triggers the equivalent of an agency incident report.
- Students are unable to recall content knowledge or skills from previous semesters.
- Students are unable to recognize or accept responsibility for errors in practice or judgment.
- Negligence or failure to act according to policy or standards of practice.
- Near misses.
- Concealing or hiding errors.

Please refer to the following link for reference: [chrome-extension://efaidnbnmnibpcjpcglclefindmkaj/https://www.ncbon.com/myfiles/downloads/education/program directors/just-culture-speet/just-culture-for-faculty-ppt.pdf](chrome-extension://efaidnbnmnibpcjpcglclefindmkaj/https://www.ncbon.com/myfiles/downloads/education/program%20directors/just-culture-speet/just-culture-for-faculty-ppt.pdf)

The faculty member observing the event will complete the Student Event Form and SPEET (Student Practice Event Evaluation Tool) according to their observation.

Clinical faculty members may use their professional judgment about removing the student from the clinical setting at the time of an event or permitting them to finish the clinical day.

The faculty member observing the event will discuss the event with the student and request the student to submit a SPEET.

Notification:

Clinical faculty will notify and consult with the course lead faculty member about the event and review the outcome of the SPEET with the lead faculty member and Program Chair

The Program Chair will coordinate remediation that may continue into the subsequent semester.

Any faculty member may consult an Educational Consultant at the NC Board of Nursing about the event. All consultations must be documented on the SPEET form, including outcomes of the consultation.

Response to SPEET:

- Events deemed to be Human Error:
 - Console the student
 - When indicated, develop a remediation plan for student improvement. The faculty member initiating the report is responsible for evaluating the result of remediation.
- Events deemed to be At-Risk Behavior:
 - Develop a remediation plan for student improvement. The faculty member initiating the report is responsible for evaluating the result of remediation.
 - Faculty members initiating the report will monitor and coach the student until the end of the timeframe designated on the remediation plan. Normally, the minimum amount of coaching is to the end of the semester. If less than three weeks remain in the semester, monitoring and coaching will continue through the end of the subsequent semester.
- Events deemed Reckless Behavior:
 - Students are subject to disciplinary action according to the policies of EUDON or Elon University.
 - Students who remain enrolled are required to complete a remediation and coaching plan. The faculty member who initiated the report will monitor and coach the student until the end of the timeframe designated on the remediation plan. Normally, the minimum amount of coaching is to the end of the semester. If less than three weeks remain in the semester, monitoring and coaching will continue through the end of the subsequent semester.

All documentation of the event, including the Student Event form, SPEET completed by faculty member and student, remediation, coaching, and follow-up will be filed in the Student Clinical File.

NCBON © - June 2009 – Used with permission of NCBON

Title of Policy No. 24: Dismissal from the Program – Clinical or Professional Reasons

Date Effective: 8/21

Date Reviewed: 7/23

Date Revised: 8/22

Policy:

The faculty of the Elon Department of Nursing has academic, legal, and ethical responsibilities to protect the safety of the public. It is within this context that a student enrolled in the nursing program at Elon University Department of Nursing may be dismissed for either academic or professional (non- academic) reasons, congruent with NCBON 21 NCAC 36. 0320.

Students who:

- Present physical or emotional problems which conflict with safety essential to nursing practice and do not respond to treatment or counseling within a timeframe that enables meeting program objectives;
- Demonstrate behavior which conflicts with safety essential to nursing practice;
- Fail to demonstrate professional behavior, including honesty, integrity, and appropriate use of social media while in the nursing program of study.

Procedure:

If a student's dismissal is due to failure to meet the requirements of the Progression Policy, that policy and procedure will be followed. For all other dismissals, the following procedure will guide the process:

1. When a faculty member determines a student's behavior may warrant dismissal, the faculty member shall notify the student verbally or in writing. If the student is participating in a clinical experience, they shall immediately cease attendance in that clinical experience. The faculty member will notify the Program Director.
2. The faculty member will provide a written description of the student's behavior to the Program Director. The student may provide a written statement to the Program Director.
3. Normally, a meeting will be convened by the Program Director or their designee within 5 business days to discuss the event(s) that initiated the dismissal. The following will normally be present: faculty who initiates dismissal, Program Director, other faculty and/or staff involved in the situation, and the student. If a student fails to appear at the called meeting, the meeting will proceed. Normally all parties will be notified of the final decision within 5 business days unless additional time is required to gather information.

Title of Title No. 25: Appeal of Dismissal

Date Effective: 8/21

Date Reviewed: 7/23

Date Revised: 8/22

Policy:

Students who are dismissed from the nursing program for academic and/or clinical reasons may appeal the dismissal per Elon University guidelines. Students are limited to a single reenrollment over an academic program in nursing and may not appeal another dismissal if one occurs. Dismissal from the program due to failure to progress and/or failure of a course is not grounds to request an appeal. Late requests for appeals will not be considered.

Procedure:

1. The appeal process must be initiated by the student within 10 university business days of the last day of class for the semester of appeal. The last day of class is listed on the Elon University Department of Nursing academic calendar.
2. The appeal may only be submitted on the “EUDON Appeal of Dismissal Form” available in the Appendix. Students must address each item on the form. Do not submit additional forms, letters, or letters of support/ reference. Only information on the “EUDON Appeal of Dismissal Form” will be used in the review process. Students will not be granted meetings with college administration while the appeal is being considered.
3. Students submit the appeal via email to sthomas47@elon.edu.
4. Appeals will be reviewed by an administrative committee designated by the Director of the EUDON.
5. Normally, decisions will be rendered within 10 university business days unless additional information gathering extends the time frame.

For further information on general appeal processes, please view the Elon University Student Handbook ([Appeals](#)).

Title of Policy No. 26: Dropping or Withdrawing from a Nursing Course

Date Effective: 8/21

Date Reviewed: 7/23

Date Revised: 8/22

Policy:

Any student who drops or withdraws from any required course within the nursing curriculum will be out of sequence in the curriculum plan. Pre-licensure students who drop courses or withdraw during the first semester must reapply to the program through competitive admission.

Students originally admitted as Direct Admit no longer have the Direct Admit status.

Reenrollment is on a space available basis and is not guaranteed.

Procedure:

Students considering dropping or withdrawing from a course are encouraged to discuss the decision with their academic advisor.

Dropping or withdrawing from a course requires dropping or withdrawing from co-requisite courses.

Dropping or withdrawing from a course result in the student being out of sequence with the curriculum course plan, which will delay progression and exit/graduation from the program.

Prior to dropping or withdrawing from a course, students should consult the EUDON policy “Program Reenrollment.”

Because dropping or withdrawing from a course may result in accounting or financial aid adjustments, students should consult their Student Financial Services Counselor.

Title of Policy No. 27: Program Reenrollment**Date Effective: 8/21****Date Reviewed: 7/23****Date Revised: 8/22****Policy:**

Students who have taken a leave of absence, dropped a course, or withdrawn from a course are categorized as “out of sequence” with their admission course plan.

Undergraduate students who become out of sequence must reenroll within one semester. Students who are not reenrolled within the designated deadline will be administratively dismissed from the program.

To assist students with reenrollment and success in the nursing program, EUDON reserves the right to review and place requirements on reenrollment into a nursing program. All requirements must be completed according to program deadlines. Reenrollment to the BSN program in the next semester is on a space available basis and is not guaranteed.

Procedure:

Students must complete requirements for reenrollment by the stated deadline. All clinical agency compliance requirements shall be up to date and compliant in CastleBranch according to program deadlines.

If the student is accepted for reenrollment, the student will be notified by the Program Director

If the student has not met the requirements of reenrollment according to program deadlines, the student will be administratively dismissed from the program.

Title of Policy No. 28: Lines of Authority for Students**Date Effective: 8/21****Date Reviewed: 7/23****Date Revised: 8/22****Policy:**

Students shall follow the lines of authority as delineated in the organizational chart for the Elon Department of Nursing.

Procedure:

Concerns should be addressed with the person who is directly involved, and then the issue will move up the chain of command, as appropriate.

For students, the appropriate chain of command is as follows:

1. The Course Faculty member
2. The Program Director
3. The Dean of the SHS

In case of clinical concern, students should contact:

1. Clinical Instructor
2. Course Lead
3. The Program Director

Title of Policy No. 29: Formal Complaint

Date Effective: 8/21

Date Reviewed: 7/23

Date Revised: 8/22

Policy:

The Student Complaint Form provides students with an avenue to submit a concern regarding any area on campus for which no other specific process exists.

This form should **NOT** be used to submit complaints or grievances regarding:

Identity-based Bias (<https://www.elon.edu/u/bias-response/>)

Title IX (<https://www.elon.edu/u/title-ix/>)

Disabilities Resources (<https://www.elon.edu/u/academics/koenigsberger-learning-center/disabilities-resources/>)

Grade appeals (see Student Handbook) (<https://elon.smartcatalogiq.com/2022-2023/Academic-Catalog/General-Academic-Regulations/Grades-and-Reports/Grade-Appeal-Procedure>)

Student Conduct Appeals (see Student Handbook) (<https://elon.smartcatalogiq.com/2021-2022/Student-Handbook>)

If a student has a complaint other than those related to Identity-based bias, Title IX, disabilities/special needs, grade appeal, or student conduct appeals, the student should:

1. Attempt to resolve the issue at the office that is the source of the complaint by speaking with a supervisor.
2. If step #1 does not result in a satisfactory resolution, the student will be instructed to submit a written complaint by filling out the online form. A link is provided below. Individuals without login credentials may complete the form below that does not require a login.
3. Any University staff member or administrator can also submit a form on behalf of a student.
4. A University staff person from the office of the Vice President for Student Life will then direct the information to the appropriate department to determine a course of action.

You will receive confirmation that your complaint was received and routed to the appropriate office within 24 hours.

The assigned office will communicate with you to follow up on your complaint. This communication typically occurs within 36 hours after the assigned office has received the complaint.

If you wish to appeal the resolution of or decision regarding your complaint as determined by the assigned office, you may do so by submitting an appeal to the Vice President who oversees the area assigned to your complaint.

If this is an emergency, contact campus safety and police at (336) 278-5555.

If you have questions about this form or would like to speak with a staff member about your complaint, please contact Susan Lindley, Executive Assistant to the Vice President for Student Life and Dean of Students at (336) 278-7220 or slindley@elon.edu. Address: 2188 Campus Box, Elon University, Elon, NC 27244.

Procedure:

Submit a Complaint:

Current Students (login required): Click here to submit a complaint
(https://elon.co1.qualtrics.com/jfe/form/SV_0Usa9oGA9BI5kWh)

Complaint form for those without a login (e.g., prospective students) (no login required): Click here to submit a complaint (<https://www.elon.edu/u/students/complaints/submit-a-complaint/prospective-student/>)

Title of Policy No. 30: CastleBranch**Date Effective: 8/21****Date Reviewed: 7/23****Date Revised: 8/22****Policy:**

Students enrolled in the EUDON are required to use CastleBranch to submit all their compliance requirements.

Procedure:

Immediately upon admission into any EUDON program, students shall create their account through CastleBranch.

Students will submit all their compliance documents to their CastleBranch account for review, by the stated deadlines.

Students who fail to create their CastleBranch account and submit their compliance documents by the stated deadlines may not participate in their clinical experiences which could impact course grades and progression in the program.

Students understand that clinical agencies may require submission of information to their portals and the Castle Branch portal.

Title of Policy No. 31: Unsafe Practice

Date Effective: 8/21

Date Reviewed: 7/23

Date Revised: 8/22

Policy:

The nursing faculty of the Department of Nursing have an academic, legal, and ethical responsibility to prepare graduates who are competent as well as to protect the public and health care community from unsafe nursing practice. It is within this context that students can be disciplined or dismissed from the program for practice or behavior which threatens or has the potential to threaten the safety of a client, a family member or substitute familial person, another student, a faculty member, or other health care provider.

Student Awareness

All students are expected to adhere to the principles of safe practice and are expected to perform in accordance with these requirements. Within courses, counseling and advising processes, and other instructional forums, students will be provided with the opportunity to discuss the policy and its implications.

Definition

1. An unsafe practice is defined as:
2. An act or behavior of the type which violates the North Carolina Nursing Practice Act, Article 9 of Chapter 90 of the North Carolina General Statutes (NCGS §90-171.37; §90- 171.44)
3. An act or behavior of the type which violates the Code of Ethics for Nurses of the American Nurses' Association.
4. An act or behavior which threatens or can threaten the physical, emotional, mental, or environmental safety of the client, a family member or substitute familial person, another student, a faculty member, or other health care provider. For prelicensure undergraduate students this is defined as any Reckless Behavior or repeated At Risk Behavior as identified on the NC BON Just Culture Nursing Student Practice Event Evaluation Tool (SPEET) (See <https://www.ncbon.com/vdownloads/just- culture/just-culture-speet.pdf>).
5. An act of behavior (commission or omission) which constitutes nursing practice for which a student is not authorized or educated at the time of the incident.
6. An act of behavior which violates a EUDON or EU Honor Code policy.

“...characteristics of an unsafe student in clinical practice include any action, attitude or behavior related to ineffective interpersonal interactions; [or] knowledge and skill incompetence...” (Killam, Luhanga,, & Bakker. (2011, p. 445).

Procedure:**Investigation and Evaluation of an Unsafe Practice**

When an incident occurs that a faculty member determines as unsafe practice, he/she shall immediately notify the student and instruct the student to leave the clinical setting. The faculty member will notify the Program Director.

The involved faculty member, in consultation with the Program Director, will review the student's clinical performance evaluations, academic record, and potential for successful completion of the major in nursing will investigate the incident within three (3) working days to determine whether there are grounds that an unsafe practice has occurred.

Based upon this careful and deliberate review, a recommendation to the Program Director will be made regarding the consequences of the unsafe practice. Consequences of unsafe practice can include at minimum a written reprimand to be placed in the student's permanent file up to dismissal from the program.

Students will receive an official email outlining the decisions made regarding unsafe behavior.

Students who wish to appeal the decision will have their case reviewed by an ad hoc committee in the School of Health Sciences to determine if an appeal is warranted.

Refer to Elon University's student dismissal policy. <https://elon.smartcatalogiq.com/en/2021-2022/student-handbook/title-ix-and-sexual-misconduct-policy/appeals/>

Hearing Process

The Program Director will notify the student, the faculty member, and the ad hoc committee members as to the time and place for a hearing.

The Committee will hold a closed hearing within ten working days of receipt of the appeal request, when the faculty member may be present and provide documentation and other oral or written evidence regarding the incident. The student may be present and will be given an opportunity to provide documentation and other oral or written evidence regarding the incident. The student will be allowed an advocate/support person at the hearing; however, the support person cannot be an attorney, and will not be permitted to speak.

Following the factual presentation, the Committee will convene in executive session to review the actions taken against the student for unsafe practice and to make a recommendation regarding the resolution of the incident. The Committee will base its recommendation on the evidence presented at the hearing. The Committee shall make its recommendation in writing to the Program Director and forward pertinent documentation.

The Committee may recommend the following remedies: support for the action taken, remedial work or instruction, a reprimand, withdrawal from the course, or dismissal from the program.

Title of Policy No. 32: Computer-based Testing Policy and Procedure for Course Exams

Date Effective: 8/21

Date Reviewed: 7/23

Date Revised: 8/22

Policy:

The following guidelines will be followed across programs to promote an equitable and effective online testing environment.

Procedure:

Students are testing under the Elon University Honor Code, and online testing occurs in a password-protected environment on the Elon University campus or at an instructor-approved location on a case-by-case basis prior to the exam administration.

Students will:

Review all course-specific instructions related to online exams, including dates and times when the exam(s) are available.

Contact technical support immediately if there is a problem while taking the exam.

Work independently without textbooks, notebooks, or audio, visual, or written input from others, unless advised otherwise.

Discuss any potential issues that impact testing with their instructor.

Comply with instructions for proctoring.

Students may not:

Take screenshots to compromise test integrity.

Access online resources during testing.

Print out or email any exam content.

Discuss the content of an exam with another student until all students have taken the exam

Exams will:

Have date and time limitations for availability.

Close at the end of the time limit indicated whether the student has answered every question or not.

Be submitted once unless multiple attempts are permitted.

Title of Policy No. 33: Exam Security / Testing Procedures

Date Effective: 8/22

Date Reviewed: 7/23

Date Revised: 8/21

Policy:

To foster a positive and supportive educational environment which sustains and promotes lifelong learning, the following guidelines will be followed during the proctoring of on campus quizzes and exams within the ABSN/BSN program. Additional measures may be implemented at the discretion of the faculty member/proctor. Students receiving testing accommodations shall follow the same guidelines regarding their accommodation and testing policies of Student Accessibility Services.

Procedure:

The following guidelines are in effect for test security in a class or laboratory environment:

- All personal belongings will be brought to the classroom's designated area before the exam/quiz is distributed.
- All electronic devices, including wearable technology, must be turned off or put in sleep mode prior to the exam/quiz being distributed. Cell phones must be placed on airplane mode, turned off, and stowed in the space designated for personal items.
- If earplugs are to be used, only foam ear plugs are permitted.
- No headgear, hat or cap may be worn which obstructs the proctor's view of the student's face. If a student chooses to wear a baseball cap, it must be worn backwards so that the bill does not obscure the student's face.
Religious head coverings are permitted.
- Food and drink are not permitted.
- Students should use the restroom prior to the beginning of the exam/quiz. A student should not plan to leave the room or lab until their exam/quiz is submitted to the proctor.
- Students may not use personal calculators. If a calculator is needed for the exam, the testing platform will provide a calculator for student use.
- Seating arrangements during the exam may be assigned at the discretion of the proctor.
- The proctor is not permitted to interpret questions or explain words for students.
- Students who arrive after the exam will not be provided with extra time to complete it.
- Students should be prepared to show ID at the beginning of the exam if asked.

Students requiring assistance from Disability Resources must register for accommodations through the [Accommodate Portal](#) on the Disability Resources website. Students are responsible for scheduling testing dates and times through Disability Resources.

Title of Policy No. 34: EUDON Student and Faculty Forum**Date Effective: 8/21****Date Reviewed: 7/23****Date Revised: 8/22****Policy:**

Students in the EUDON have a variety of avenues to provide feedback to the faculty and administration of the EUDON.

At the end of each course, students are encouraged to complete course, faculty, and clinical evaluations, which are subsequently reviewed by committees within the EUDON.

The EUDON Student and Faculty Forum provides a space where faculty and students discuss topics of interest to both parties. The forum provides the opportunity for in-depth discussion while promoting student participation in the governance process.

Procedure:

1. The Program Director will select representatives each academic year.

	Students	Faculty
BSN/ABSN	One selected representative from each ABSN/BSN cohort	Program Director and the Chairs of the Curriculum Committee, Student Affairs, and Program Evaluation Committee

2. The Committee Chairs may use various methods to gain student feedback including meetings, forums, and surveys.
3. Minutes of meetings will be recorded. Notes will be compiled for alternate methods for communication.
4. Outcomes of the forums will be summarized and reported to the faculty in department meetings.
5. Outcomes, including any changes to curriculum, policy, or services will be recorded in the EUDON Systematic Plan Program Evaluation.

Title of Policy No. 35: Transfer into Nursing Program**Date Effective: 8/23****Date Reviewed:****Date Revised:****Policy:**

Students wishing to transfer into the nursing program from within or outside of the university.

Procedure:

1. Student must notify the office of admissions of the intent to transfer.
2. Student must discuss transfer with advisor and nursing department chair.
3. Student must meet the following criteria:
 - a. SAT minimum score of 1100 **OR**
 - b. ACT minimum score of 22
 - c. Cumulative GPA of 3.0
 - d. Grade of C or higher in all prerequisite courses
4. Student must meet all clinical requirements as outlined in Policy Number 4.
5. Application Deadlines
 - a. Fall semester start – application due by 6/1
 - b. Spring semester start – application due by 11/1

Title of Policy No. 36: Dress Code for Pre-Licensure Students

Date Effective: 8/22

Date Reviewed: 7/23

Date Revised: 8/23

Policy:

When in uniform, in clinical, or the IPE Simulation Center, the dress code must be followed.

The Elon University Department of Nursing uniform consists of the following and must be purchased from Meridy's Uniform. Substitutions are not permitted:

- Uniform tops and bottoms for simulation and laboratory learning must be gray.
- The uniform for the inpatient setting is grey top and bottoms. Uniform color for clinical may vary according to cohort and status in the program. Clinical faculty will let students know in advance of appropriate attire for the clinical experience. Clinical attire for community experiences/rotations may vary from that required for inpatient settings. In this case, students will be notified of the appropriate attire required.
- Religious head coverings are permitted.
- Women in either program choosing to wear a skirt may do so in the pants color selection for the program in a basic uniform style. Skirt must be below the knee in length.
- Plain solid white, black, or gray T-shirt or turtleneck shirt may be worn under scrub tops if it meets clinical agency policy.
- Shoes in the clinical setting shall be flat, clean, with no open cloth or canvas material shoes, and no open- back clogs. Leather sneakers are permissible. No Crocs or shoes with holes are permitted in the clinical area. Shoes must be solid black, white, gray, or burgundy only.
- Plain white/flesh-colored pantyhose may be worn with skirts.
- Uniforms **MUST** be clean, unwrinkled, and worn as designed.
- A valid Student identification badge with student picture **MUST** be worn whenever in uniform and at designated community events.
- Undergarments (panties, bras) should not be able to be seen through uniforms.
- Other items considered required parts of the student uniform are:
 - wristwatch (cellphones are not an acceptable substitute)
 - stethoscope
 - bandage scissors
 - penlight
- Hair must be dry, neat, clean, and styled so that it does not interfere with patient care. Hair on or below the shoulder must be pulled back. Hair may be secured with a plain head band of a neutral solid color (black, blue, white, brown) or other method (clip, pins, etc.) that is unobtrusive and in compliance with facility policies.
- Beards and mustaches must be kept clean and neatly trimmed.

- Nails must be clean, short, and well-manicured. Only colorless nail polish is permitted. Artificial nails, shellac and gel polishes are not permitted.
- Jewelry is limited to:
 - Wristwatch with a second hand (preferably analog);
 - maximum of 2 rings (rings with prongs are not acceptable);
 - Earrings must not dangle; studs only.
 - no visible body ornaments, except as identified above.
- Tattoos, branding, and other forms of body art must comply with clinical agency policies.
- The face may not be covered while in the clinical setting except for personal protective equipment.
- Make-up, cologne, or perfume must comply with clinical agency policies.

Modifications to the dress code will be considered individually by the Program Director. Clinical instructors will inform students of agency dress code requirements to which students must adhere while in that agency. Students are required to follow the more restrictive policy.

Students are not permitted to wear Elon University Department of Nursing nametag or uniform when not in the nursing student role.

Failure to comply with the dress code may result in removal from clinical for an assigned experience with an unsatisfactory clinical evaluation for the day.

Unsatisfactory performance can impact a student's ability to pass the course.

Procedure:

The faculty will identify students not in compliance with the dress code and permit them to comply within one hour. Students unable to comply within the one-hour period will be removed from clinical.

See "Temporary Removal from Class or Clinical" Policy.

Title of Policy No. 37: Clinical Attendance

Date Effective: 8/21

Date Reviewed: 7/23

Date Revised: 8/22

Policy:

Clinical Attendance

Attendance is mandatory for all scheduled clinical experiences, including those that occur in the IPE Simulation Center and at alternate clinical sites. Students must be present in clinical a sufficient period during the semester for determination of the student's consistent ability to meet the course learning outcomes. A clinical absence is defined as any day or partial day the student is not present in the clinical setting. The EUDON does not differentiate between excused or unexcused absences.

Students are either present or absent. Students who are absent for clinical will be required to make-up that clinical day at the discretion of the course leader.

A clinical tardy is defined as not being present at the assigned time through the first 15 minutes of the scheduled clinical experience. Two (2) clinical tardy occurrences equal one clinical absence. It is the clinical faculty member's professional discretion if the student may participate in the clinical experience after a tardy arrival. If the student remains in clinical, their performance on that day will be evaluated as part of their course performance but will not negate the consequences of the tardy arrival.

In the event of unplanned clinical cancellation, such as but not limited to weather, faculty illness, or university closure, there will be no additional clinical time or alternate activity. The clinical time will not be "made up" or rescheduled and is not recorded as a student clinical absence.

Students who miss more than 20% of scheduled clinical hours (including simulation) may fail the clinical portion of the course, therefore resulting in failure of the course.

Procedure:

Title IX Compliance: Students who anticipate absences because of pregnancy, childbirth, recovery from any related conditions, or parenting should consult with the program Chair.

ADA Compliance: Student situations requiring temporary accommodation under the ADA will be reviewed on a case-by-case basis. These situations may include the student wearing a brace or cast, use of crutches, lifting restrictions, or concussions. The clinical agency reviews the student's ability to perform and/or their policy concerning assistive devices in the clinical setting and makes the final decision to permit a student's participation in clinical experiences at that agency. Each agency evaluates the situation based upon their policies and procedures. If a clinical agency denies permission to participate in clinical experiences, the department of nursing is under no obligation to provide alternate experience until the situation is resolved.

Pre-licensure students should notify the Program Director and the Director of Disabilities Resources as soon as possible when a situation occurs that may require temporary accommodation. Students may be asked to provide documentation and progress reports from a healthcare professional, including a statement that the student may return to full activities and/or participation in clinical.

In the event of an absence, for any reason, the student must notify faculty at least 60 minutes prior to the time that the clinical experience is scheduled to begin. The clinical faculty member will designate the way they should be notified.

Absence or clinical tardiness will be documented in the weekly formative clinical evaluation.

Students may be required to provide clearance from a healthcare provider to return to a clinical setting. All documentation should be submitted to the Program Director. Clinical faculty may not accept or evaluate this documentation.

Students who miss more than two weeks of clinical experiences due to pregnancy, childbirth, recovery from any related conditions, or parenting must provide documentation from a healthcare provider stating that they are unable to participate in clinical.

All documentation should be submitted to the course lead. Clinical faculty may not accept or evaluate this documentation.

The student will receive a grade of Incomplete in the course and will be permitted to complete clinical requirements the next semester the course is offered pending availability of a clinical site and section.

The student will not be permitted to progress in the program until the grade of incomplete is resolved.

Title of Policy No. 38: ATI Testing (Testing and Remediation Program)

Date Effective: 8/21

Date Reviewed: 7/23

Date Revised: 8/22

Policy:

Proctored Assessment Technologies Institute ® (ATI) Examinations

Proctored ATI content-specific course examinations will be given in the areas of 1) fundamentals of nursing, 2) pharmacology, 3) medical/surgical nursing 4) maternal/ newborn nursing, 5) nursing care of children, 6) mental health, 7) community health, and 8) health assessment.

The proctored ATI content-specific course exam grades will account for 5% of the final grade for the course in which it is administered. These exams compare the student's understanding of the content to national samples. The grades for the ATI content-specific course exam will be based on proficiency levels:

- Proficiency Level 3 –ATI exam grade 100%
- Proficiency Level 2 –ATI exam grade 86%
- Proficiency Level 1 - ATI exam grade 77%
- Below Proficiency Level 1 - ATI exam grade 70%

Procedure:

Referenced Proficiency Levels provided by ATI. The Criterion Referenced Proficiency Levels are as follows:

The student meeting the criterion established for Level 3 is:

- Very likely to exceed NCLEX standards in this content area.
- Demonstrates a higher-than-expected level of knowledge in this content area that confidently supports academic readiness for subsequent curricular content.
- Exceeds most expectations for performance in this content area.
- Demonstrates achievement of a level of competence needed for professional nursing practice in this content area that exceeds most expectations.
- Meets benchmark and does not require additional academic support in the content area.

The student meeting the criterion established for Level 2 is:

- Fairly certain to meet NCLEX standards in this content area.
- Demonstrates a level of knowledge in this content area that more than adequately supports academic readiness for subsequent curricular content.
- Exceeds minimum expectations for performance in this content area.

- Demonstrates achievement of a satisfactory level of competence needed for professional nursing practice in this content area.
- Meets benchmark and does not require additional academic support in the content area.

The student meeting the criterion established for Level 1 is:

- Is likely to just meet NCLEX standards in this content area.
- Demonstrates the minimum level of knowledge in this content area required to support academic readiness for subsequent curricular content.
- Meets the absolute minimum expectations for performance in this content area.
- Demonstrates achievement of a minimum level of competence needed for professional nursing practice in this content area.
- Does not meet benchmark and requires mandatory academic support in the content area.

*Required to meet with the course faculty and develop a remediation plan.

The student scoring below the Proficiency Level 1:

Recommended cut score did not meet the criterion established for Level 1.

Requires mandatory academic support and must meet with the course faculty and develop a remediation plan.

***** Please note that Policy No. 31, Online Testing Policy, and Procedure applies to ATI testing. *****

Standardized Testing Remediation with ATI

EUDON follows ATI best practices for student remediation. Each course faculty will include remediation guidelines in their course syllabi.

CMS AND CBC GRADING RUBRIC

(Use a combination of the practice and proctored assessments to achieve 10% of the course grade.

This sample assumes a 100-point course.)

PRACTICE ASSESSMENT			
4 points			
Complete Practice Assessment A. Remediation: <ul style="list-style-type: none">• Minimum 1-hour Focused Review on initial attempt <ul style="list-style-type: none">• For each topic missed, complete an active learning template as part of the required remediation process.* Take Post Study Quiz (if available)** and complete an active learning template for each topic missed.		Complete Practice Assessment B. Remediation: <ul style="list-style-type: none">• Minimum 1-hour Focused Review on initial attempt <ul style="list-style-type: none">• For each topic missed, complete an active learning template as part of the required remediation process.* Take Post Study Quiz (if available)** and complete an active learning template for each topic missed.	
STANDARDIZED PROCTORED ASSESSMENT			
Level 3 = 4 points	Level 2 = 3 points	Level 1 = 1 point	Below Level 1 = 0 points
Remediation = 2 points: <ul style="list-style-type: none">• Minimum 1-hour Focused Review <ul style="list-style-type: none">• For each topic missed, complete an active learning template as part of the required remediation process.*	Remediation = 2 points: <ul style="list-style-type: none">• Minimum 2-hour Focused Review <ul style="list-style-type: none">• For each topic missed, complete an active learning template as part of the required remediation process.*	Remediation = 2 points: <ul style="list-style-type: none">• Minimum 3-hour Focused Review <ul style="list-style-type: none">• For each topic missed, complete an active learning template as part of the required remediation process.*	Remediation = 2 points: <ul style="list-style-type: none">• Minimum 4-hour Focused Review <ul style="list-style-type: none">• For each topic missed, complete an active learning template as part of the required remediation process.*
10/10 points	9/10 points	7/10 points	6/10 points
Proctored Assessment Retake***			
No retake required	No retake required	Retake required/recommended	Retake required/recommended

Title of Policy No. 39: NCLEX-RN® and Licensure**Date Effective: 8/21****Date Reviewed: 7/23****Date Revised: 8/22****Policy:**

Instructions to take the NCLEX-RN® examination, requirements for licensure and the level of license eligibility are determined by individual states. Individual State Boards of Nursing or the designated state agency approve or deny licensure within their jurisdiction.

Verification of program completion shall be made after a student successfully completes all academic degree requirements and the degree is officially awarded by the Registrar's Office. In addition, any financial obligation to the University must be settled before verification is provided.

Procedure:

Students testing in North Carolina must complete the North Carolina online registration process by the last day of class of the student's final semester as indicated on the Academic Calendar.

Students testing in a state other than North Carolina shall contact the state in which they desire to be licensed to obtain the required verification forms. The student shall complete their portion of the form. All forms must be submitted to the EUDON Director by the last class day of the student's final semester as designated on the academic calendar. If the state requires transcripts the student is responsible for obtaining them through the Registrar's Office.

Students who change their name during or following enrollment in a pre- licensure program must inform the Director of the EUDON via email by the last day of class as indicated on the academic calendar. The information shall include their name during enrollment and the name on their NCLEX-RN application.

Detailed information on the NCLEX-RN testing process and how pass/fail decisions are available on the National Council of State Boards of Nursing website at www.ncsbn.org

Title of Policy No. 40: Pre-licensure Course Grades and Grading Scale**Date Effective: 8/21****Date Reviewed: 7/23****Date Revised: 8/22****Policy:**

Official course grades are available to students via the OnTrack portal at the end of each term. Course grades and any portion of the grade (i.e., exam grades) will not be communicated by telephone or email.

Procedure:

All courses in the BSN program use the following system of grades:

Grade	Equivalency
A	93-100 %
A-	90-92%
B+	87-89%
B	83-86%
B-	80-82%
C+	77-79%
C	73-76%
C-	70-72%
D+	67-69%
D	63-66%
F	62% and below

Course grades are not rounded until the final course grade is calculated. Students must earn 80.0% or higher to progress in their nursing prefixed courses. Students earning less than 80.0% will not successfully complete the course.

Once the student achieves an 80%, the final grade is carried to 2 decimal points and then will be rounded. A grade of X.5 will be rounded up to the next whole number. A grade of X.49 will be rounded down to the lower whole number. Rounding occurs only once in the final grade calculation.

Title of Policy No. 41 Grading Courses with a Clinical Component

Date Effective: 8/22

Date Reviewed: 7/23

Date Revised:

Policy:

Elon Department of Nursing uses a competency-based model of clinical evaluation. EUDON adopts Benner's Novice to Expert student performance in NRS courses that are leveled to represent the appropriate competency level for each course. Therefore, foundational and specialty clinical courses ([NRS 2100](#), [NRS 2200](#), [NRS 3200](#), [NRS 3400](#), [NRS 4200](#), [NRS 4400](#), [NRS 4600](#)) requiring 40 clinical hours or less, a midterm clinical competency evaluation is not reasonable, and a final clinical competency evaluation will be completed. Students will receive frequent verbal feedback from clinical faculty and clinical faculty will provide written feedback via student incident reporting for any performance that falls outside of the expected clinical, professional, and critical safety behaviors outlined in the clinical and course objectives.

As students' progress through the course and gain experience, expectations for student performance increase in rigor. For clinical courses requiring 80 hours or more of clinical ([NRS 3100](#), [NRS 4500](#), [NRS 4800](#)), students will receive a midterm and final clinical competency evaluation.

Procedure:

At the completion of each clinical experience in [NRS 2100](#), [NRS 2200](#), [NRS 3200](#), [NRS 3400](#), [NRS 4200](#), [NRS 4400](#), [NRS 4600](#) the student will:

1. Consult the lead course faculty and/or clinical faculty if clarity is needed for submitting clinical competency evaluations.
2. Demonstrate clinical competencies have been met by providing one detailed example of acceptable performance for required clinical competency(ies).
3. Submit the completed clinical competency evaluation to the clinical faculty within 48 hours prior to the last day of the clinical rotation.
4. Receive an overall assessment evaluation of either M= Met or NM= Not Met
5. Meet with clinical faculty if student has not demonstrated satisfactory performance and the assessment score received =NM Not Met * [Students who receive a *Not Met* competency evaluation will receive a non-passing grade in the course and are unable to progress in the major.](#)

At the completion of each student clinical experience in [NRS 3100](#), [NRS 4500](#), and [NRS 4800 Pathways](#), the student will:

1. Consult the lead course faculty and/or clinical faculty if clarity is needed for submitting clinical competency evaluations.
2. Demonstrate clinical competencies have been met by providing two detailed examples of acceptable performance for required clinical competency(ies). One at midterm and one at the final evaluation.
3. Submit the clinical competency evaluation to the clinical faculty at midterm (after 40 hours of clinical completion) and 48 hours prior to the last day of the clinical rotation at the completion of clinical.
4. Receive a midterm evaluation of M=Met, NI= Needs Improvement or NM= Not met.
5. Meet with clinical faculty at midterm if student receives an assessment grade of NI or NM to discuss active learning plan to progress to Met by the end of the clinical rotation.
6. Receive a final evaluation of M=Met or NM=Not Met. [Students who receive a *Not Met* competency evaluation will receive a non-passing grade in the course and are unable to progress in the major.](#)

Title of Policy No. 42: Health Insurance Requirement

Date Effective: 8/21

Date Reviewed: 7/23

Date Revised: 8/22

Policy:

All full-time students (undergraduate, graduate and law) must maintain adequate medical insurance during their enrollment at Elon University. Part-time students are exempt from this requirement. Having adequate insurance to cover medical emergencies and routine visits is an important aspect of the health and wellbeing of Elon students. Students may fulfill the requirement in several ways:

- Coverage as the primary subscriber on an employer plan
- Coverage as a qualified dependent on a parent/guardian/partner employer plan
- Coverage through a plan in the United States health insurance marketplace
- Enrollment in the Student Blue Plan for Elon students through Blue Cross Blue Shield of North Carolina

Procedure:

All students enrolled in a pre-licensure nursing program will be charged health insurance each semester. If students have comparable coverage, they may wish to waive this coverage. To decline participation in and to remove charges from a student account for this insurance, students must complete an opt-out verification on-line with the University's insurance provider the first academic term of every academic year the student is enrolled.

For more information about the required insurance requirements, visit the following website: [Student Health Insurance Requirement](#)

Title of Policy No. 43: Progression in the Major

Date Effective: 8/21

Date Reviewed: 7/23

Date Revised: 8/22

Policy:

Standards for academic progression through the nursing major are consistent with but may be higher than the Elon University academic regulations (see Catalog).

Students enrolled in prerequisite courses (BIO 2312/2313, BIO 2412/2413, BIO 2122, PSY 2100, PEH 3240) must successfully complete the course with a C or higher. All prerequisite courses must be successfully passed with a grade of C or higher before any NRS course with a clinical component can be taken. All courses required in the nursing curriculum (NRS Prefix) must be successfully completed with a B- or higher. Students who earn a grade of less than B- may repeat one course only. Students who do not successfully pass a NRS course must retake the course and successfully pass it **BEFORE** they are permitted to progress in the nursing program. Students who earn a grade less than a B- in two or more nursing courses are dismissed from the program.

Course prerequisites/co-requisites must be met as outlined in the university catalog. Deviations from the identified sequence for any reason must be approved by the Chair/Program Director.

To successfully graduate from the nursing program, students must maintain a B- average or better. Students that have a semester GPA under 3.0 will be placed on academic probation. If after being placed on academic probation, a student continues to maintain a GPA less than 3.0. may be dismissed from the program.

Students who repeat a course in the final semester of the program are required to participate in the NCLEX-RN Success Action Plan. Failure to successfully complete NCLEX-RN Success Action Plan will result in a failing grade (F) in the course in which the student is enrolled.

Procedure:

BSN students who are dismissed from the major and the EUDON may remain a student in the university.

Students repeating an NRS course must successfully complete it on the second attempt. Only after the successful completion of the course (earned final grade of B- or higher) may the student progress in the major. The student is responsible for all tuition, fees, and financial aid ramifications for repeating the course.

An NCLEX-RN Success Action Plan (Action Plan) must be completed by any student repeating a course in the final semester of the BSN pre-licensure program. Students must complete all parts of the Action Plan. Students who do not successfully complete the action plan will receive a grade of F in all nursing courses in the final semester of enrollment. The plan may be revised during the academic year. The Action Plan will consist of:

- An Action Plan signed and dated by both the NCLEX-RN® Success Faculty advisor and student.
- Completion of practice tests in preparation for the NCLEX-RN® that includes assigned exams in the **ATI learning platform**.

Failure to Progress in the Major Flowchart.

The student receives official notification of their academic status. The student will receive a notification letter via email indicating their academic status in the nursing program. If appropriate, a Letter of Intent will be included.

Student's Academic Status

C or below in ONE NRS course attempt	C or below in TWO or more NRS course attempts
<p>The student can repeat the course. The student must sign and return the Letter of Intent by the designated deadline.</p> <p>If the student does not submit a signed copy of the Letter of Intent by the designated deadline, they forfeit the option to repeat a course and are dismissed from the nursing program.</p> <p>Students that choose to repeat a course may check with their advisor to determine if other non-nursing graduation requirements can be completed.</p> <p>If the student submits a signed Letter of Intent by the deadline, students will register into the appropriate nursing course section that they are repeating.</p>	<p>The student is dismissed from the nursing program and counseled about other majors at Elon.</p> <p>The following majors are often of interest to these students due to the similarities to the nursing curriculum.</p> <ul style="list-style-type: none"> • Human Services Studies • Psychology • Biology • Health Communications <p>It is the student's responsibility to register for courses in their new major process. A Change of Major form must be filed by the student with the Registrar's Office. For advising assistance related to a change of major please visit https://elonuniversity.sharepoint.com/sites/administrative/academicaaffairs/advising/SitePages/majorDeclaration.aspx?IsDlg=1</p> <p>The student will be administratively removed from all nursing courses.</p>

Title of Policy No. 44: Dismissal from the Program – Academic Reasons**Date Effective: 8/21****Date Reviewed: 7/23****Date Revised: 8/22****Policy:**

Students who earn a grade of B – (<80%) or below in two or more nursing course attempts at any time during their enrollment in upper division coursework are dismissed from the program. Dismissal will occur regardless if the grades are earned in the same or different semesters.

Procedure:

Students are notified of their official grades via OnTrack.

Students will be administratively removed from nursing courses.

Title of Policy No. 45: Readmission to the Program

Date Effective: 8/21

Date Reviewed: 7/23

Date Revised: 8/22

Policy:

A former Elon BSN student may request readmission to the BSN program after a separation for reasons that include, but are not limited to the following situations:

- Previous failure to progress
- Failure to return from a leave of absence within specified time frame
- Withdrawal from the university

Procedure:

A former Elon BSN student applies for readmission to the BSN program via the established process and review.

If the student is offered readmission, the nursing courses completed at Elon will be evaluated.

- Only courses that remain unchanged in the current curriculum will be considered.
- Students must have an earned grade of B- or higher.
- There may be no more than 2 years between course completion and the same course in the readmission course plan.

EUDON STUDENT FORMS AND APPENDICES

**THE FOLLOWING ARE PROVIDED AS
EXAMPLES OF STUDENT FORMS**

**INDIVIDUAL FORMS WILL BE PROVIDED, AS
NEEDED, THROUGH CASTLEBRANCH, CLINICAL
AGENCIES, FROM PROGRAM CHAIR, OR FROM
YOUR ACADEMIC ADVISOR.**

Acknowledgement of the EUDON Student Handbook

I, _____, a student in the Elon Department of Nursing,
PRINTED NAME
hereby signify that:

1. I have read and understand the content of the 2023-2024 EUDON Student Handbook.
2. I had the opportunity to ask questions regarding the content of the EUDON Student Handbook.
3. I understand that I am bound by the rules and regulations stated in the current EUDON Student Handbook during each semester of enrollment.
4. I understand that I am bound by the rules and regulations if changes are made to the EUDON Student Handbook during the academic year.
5. I understand the 2023-2024 Student Handbook is subject to change with a 30-day notice to students.

Student's Signature

Date

CRIMINAL BACKGROUND/DRUG SCREEN POLICY

Affiliating clinical agencies with which the College has contracted to provide clinical experiences require all students admitted into the Nursing Program to submit to a criminal background check and drug screening prior to participation in clinical experiences at the site. The criminal background check will be based on Social Security number (assuring national review) and must include a check for sexual predator. Furthermore, the student is made aware that information obtained from the screening is forwarded to clinical agencies if discrepancies are found on the record. Failure to provide complete and accurate information requested for a criminal record check may be grounds for dismissal from the nursing program. Students are responsible for the cost of the background check and drug screen.

1. Applicants should be aware that a student must be able to enter and/or remain in all clinical agencies to progress within the program. If a clinical site denies a student placement in the facility, the student would be unable to complete the required clinical component of the course. The student will be withdrawn from all NUR courses and will not be allowed to progress in the program.
2. Currently the nursing program uses an on-line vendor for background checks and for drug screening. Information on how to complete the process will be provided.
3. The background check and drug screening must be completed by the specified date. Failure to complete the process as specified will jeopardize continuation in the nursing program.
4. Any criminal conviction that occurs subsequently to the criminal background check must be communicated in writing to the Dean of Student Development in Student Services within 5 days after such conviction has been entered by the court, notwithstanding the pendency of any appeal.

Applicants to the nursing programs should be aware that if they have pled guilty to or been convicted of a felony or misdemeanor (other than a minor traffic violation), the NC Board of Nursing may restrict or deny licensure. The NC Board of Nursing requires criminal history checks for each person applying for licensure to practice nursing in North Carolina. Applicants will be charged a fee to offset the cost of the background check.

The student consents to provide, upon request, drug screen and/or criminal record information and results. The student will request and obtain the information from the screening agency. Failure to comply will be grounds for dismissal from the nursing program.

I _____ (Print Name) have read the above policy and agree to have the criminal background check and drug screen done and am aware that any discrepancies found will be forwarded to clinical agencies.

Student Signature: _____

Date: _____

Criminal background and drug screens must be completed and submitted by August 1, 2022. No exceptions. Drug screens are to be completed and uploaded between July 1-July 31.

Hepatitis B Vaccine Declination Form

I understand that as a nursing student or nursing faculty member I am at risk of exposure to the hepatitis B virus (HBV). By signing this declination form I am declining to have the vaccination currently, although I understand the seriousness of HBV infections and the implication of my decision. I further understand that I may choose to receive the vaccination at any time.

Signature of Student/Faculty Member

Date

Printed Name

Student Practice Event Form

Student: _____ Date of Event: _____ Time of Event: _____

Program: _____ Course: _____

Type of Event: ☐ Clinical ☐ Other

Name of Faculty Member Initiating Report Process: _____

Describe Event (Include witnesses, context. Do not include patient names):

Student Practice Event Evaluation Tool (SPEET) Scores

SPEET Score (Faculty): ☐ SPEET Score (Student):

- ☐ Human Error
- ☐ At-Risk Behavior
- ☐ Reckless Behavior

- ☐ Human Error
- ☐ At-Risk Behavior
- ☐ Reckless Behavior

Student Comments:

Outcome:

- ☐ Console Student
- ☐ Coaching by _____ until _____
- ☐ Remediation plan to be monitored by faculty member completing report:
 1. Goals of remediation (list course objectives, professional behaviors, etc.)
 2. Method to achieve goals:

3. Timeframe to achieve goals: (may include step-by-step description)

4. Evaluation of Goals:

☐ Disciplinary Action (to be completed and documented per policy)

Resolution of Event: To be signed when all elements of Outcome are complete.

Signatures:

Student:

Date:

Faculty: ☐ Date:

****Form will be filed in Student Clinical File****

Click here for additional information:

<https://www.ncbon.com/education-resources-for-program-directors-just-culture-information>

EUDON Appeal of Dismissal

Name: Student ID:

Current Mailing Address:

Program: (Check one) ☐ BSN ☐ ABSN

Reason for Dismissal from the program:

Please review the dismissal and appeal policies in the EUDON Student Handbook and provide an explanation, based on those policies, about why you are appealing your dismissal:

My signature represents that I have responded truthfully in completing this appeal request in accordance with the Elon University Honor Code.

Student's Signature

Date

(Note: Typing your name on this line constitutes your electronic signature and is considered an official signature.)

****Late requests for an appeal will not be considered****

Progression in the Major - Letter of Intent Form

By signing below, I understand I have not met the requirements to progress in the nursing program. I also understand my options as a student and acknowledge assistance has been offered to help me with the following decision.

I have selected the following option (check one box below):

- ☐ Continue in the nursing program and repeat the nursing course for which I earned a grade of C or below.
- ☐ Remain a student at Elon University and change to a different major. Please complete a Change of Major form and turn it in to the Registrar's Office
- ☐ Leave Elon University. Please see the Registrar's Office.

If you select to continue in the nursing program, please initial here, indicating the following:

1. I have read EUDON Student Handbook policy "Progression in the Major/Failure to Progress."
2. I acknowledge that I have been advised to speak with my counselor in Student Financial Services.
3. I acknowledge that earning another grade of C or below will result in my dismissal from the nursing program.

Student's Name: _____

PRINTED NAME

Student's Signature

Date

Photo Release Form

I, the undersigned, grant permission to Elon University' Department of Nursing to use photographs/and or videos taken of me on _____(date) at _____(location) in public communications related to: (state the purpose below).

(Signature of participant and/or guardian for children under age 18)

Name _____

Email Address _____

Phone Number _____

Witness/Elon Faculty or Student Representative

Date