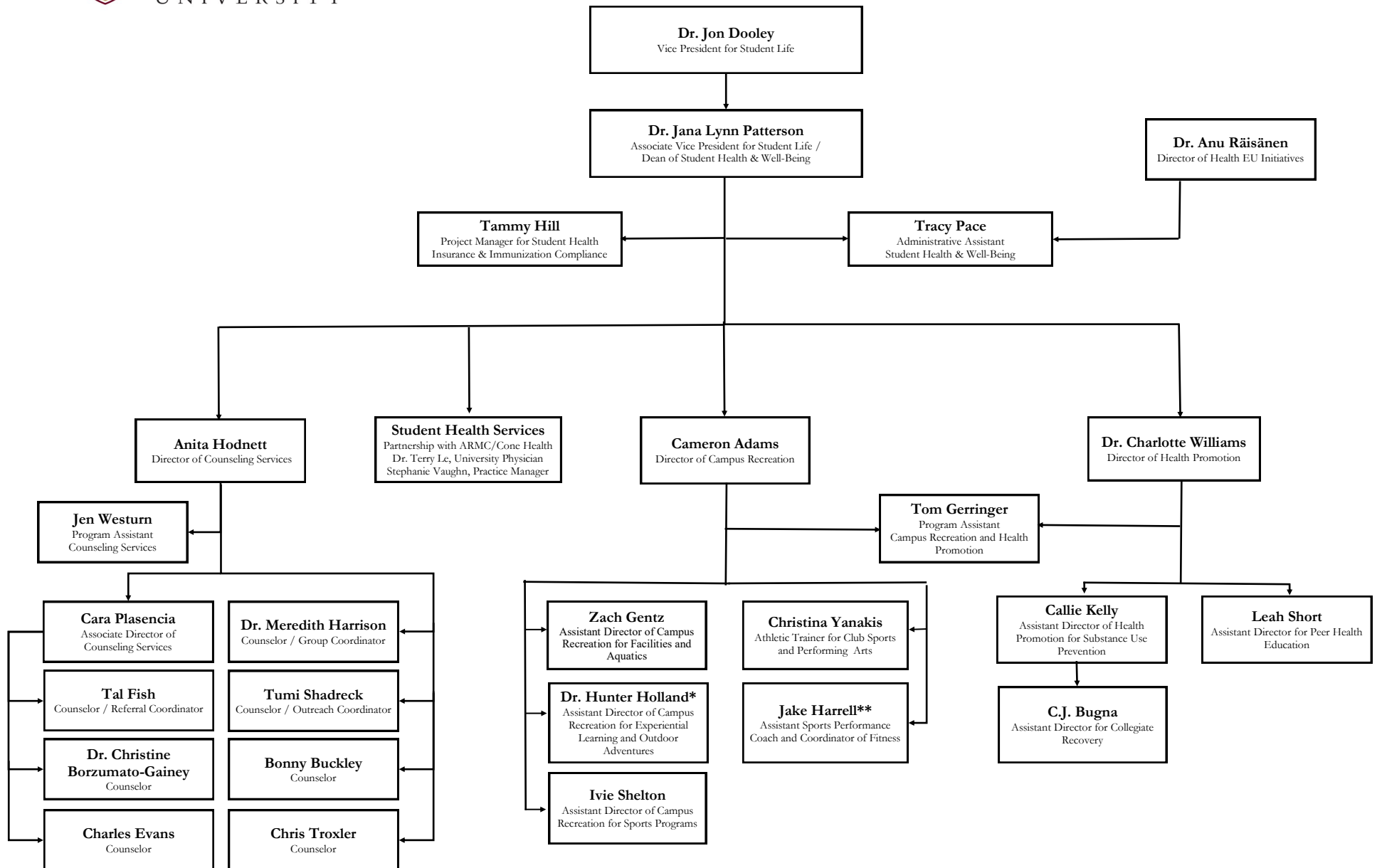


*Jointly reporting to Student Life and Inclusive Excellence

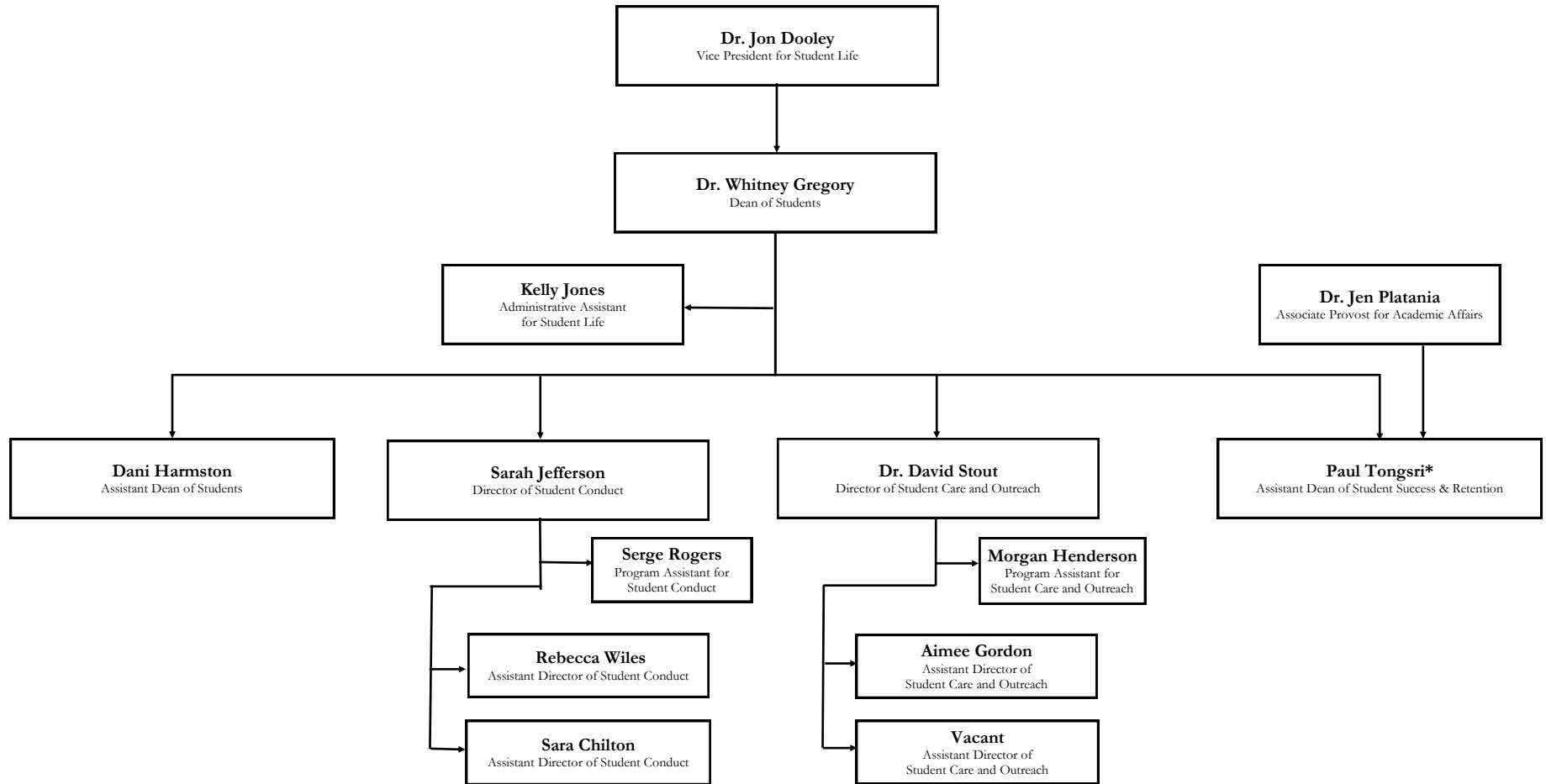
**Jointly reporting to Student Life and University Communications

***Reporting to Academic Affairs, secondary report to Student Life



*Secondary report to the Center for Leadership

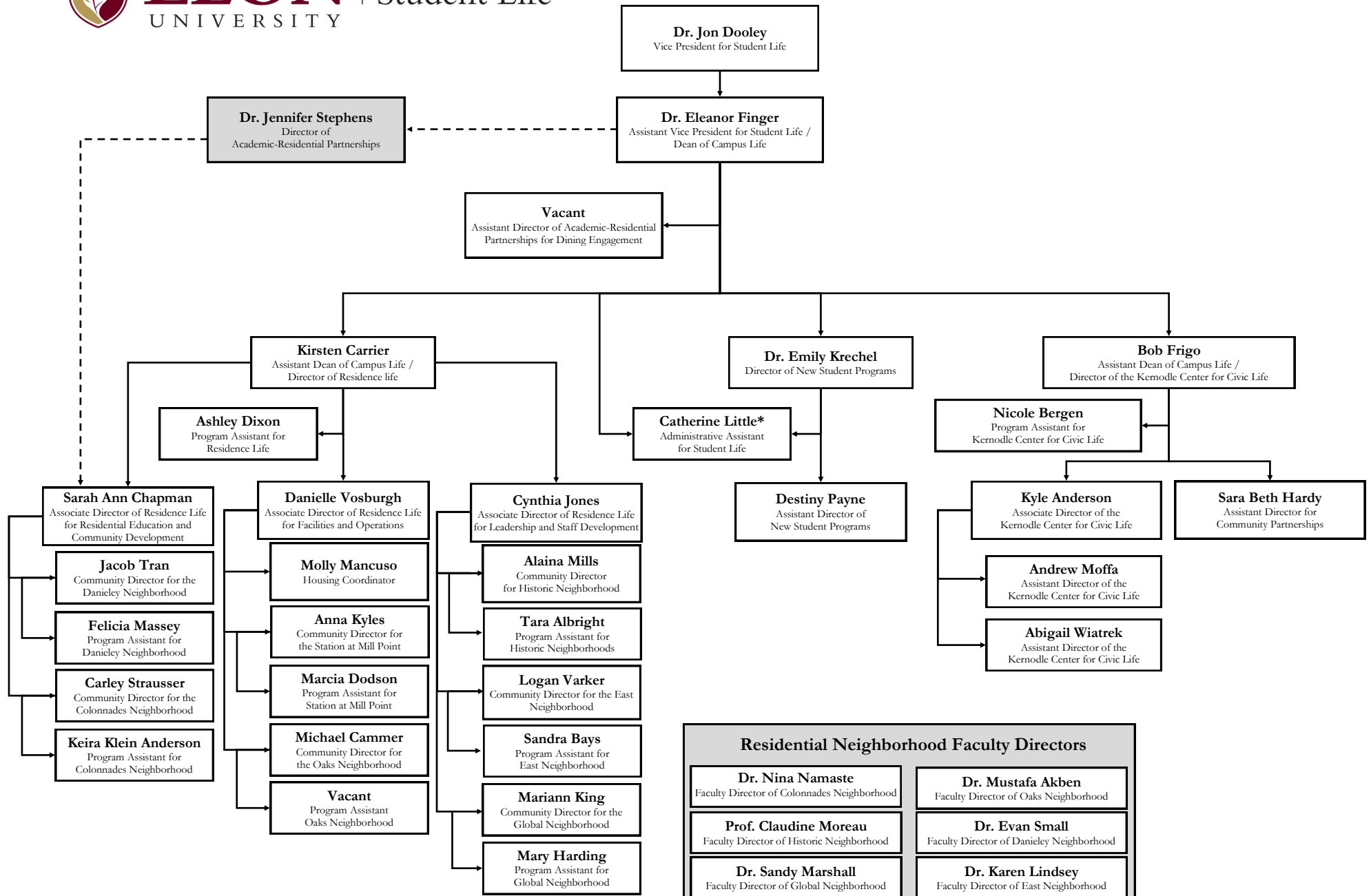
**Jointly reporting to Student Life and Athletics





ELON
UNIVERSITY

DIVISION OF
Student Life



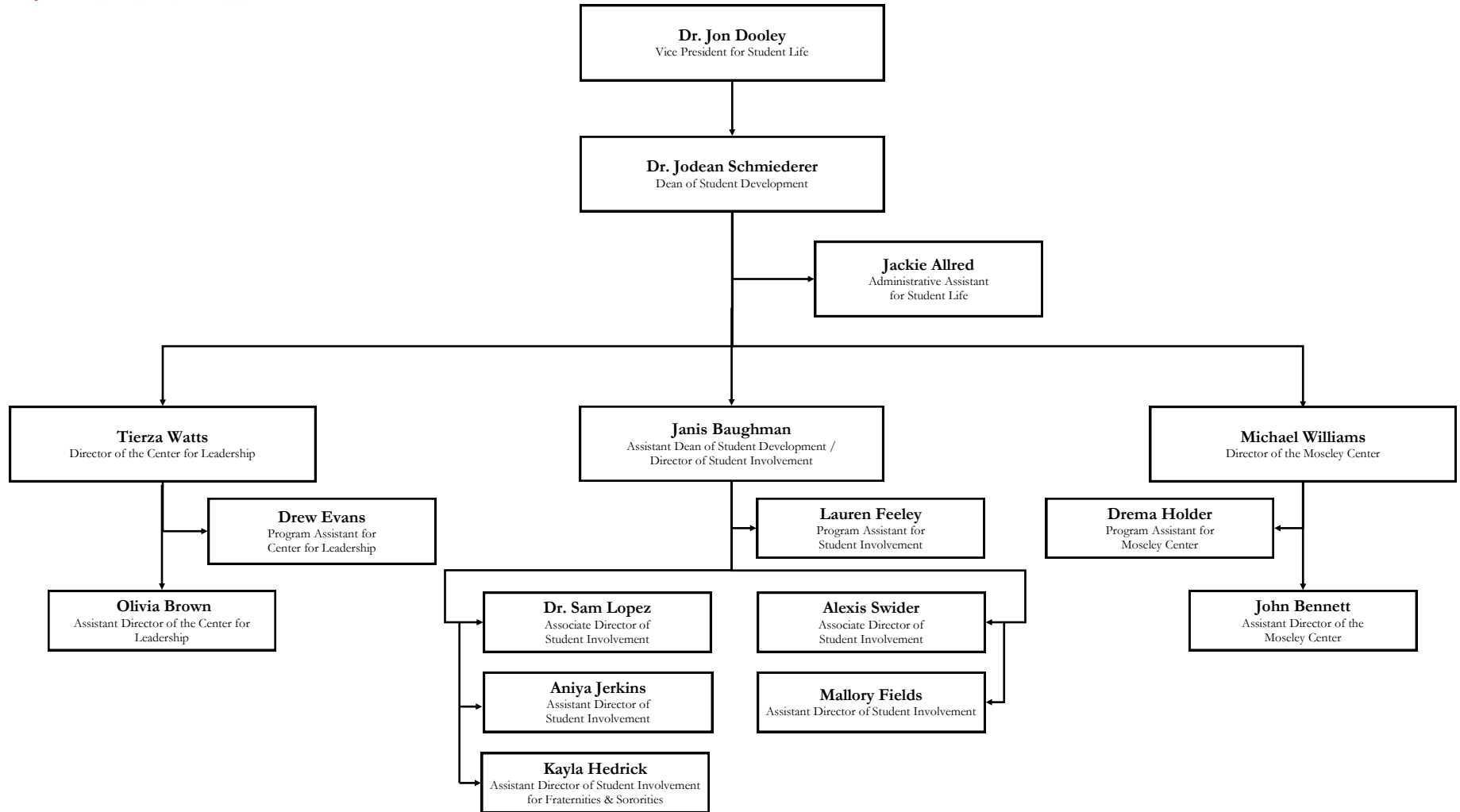
*Jointly reporting to Campus Life and
New Student Programs

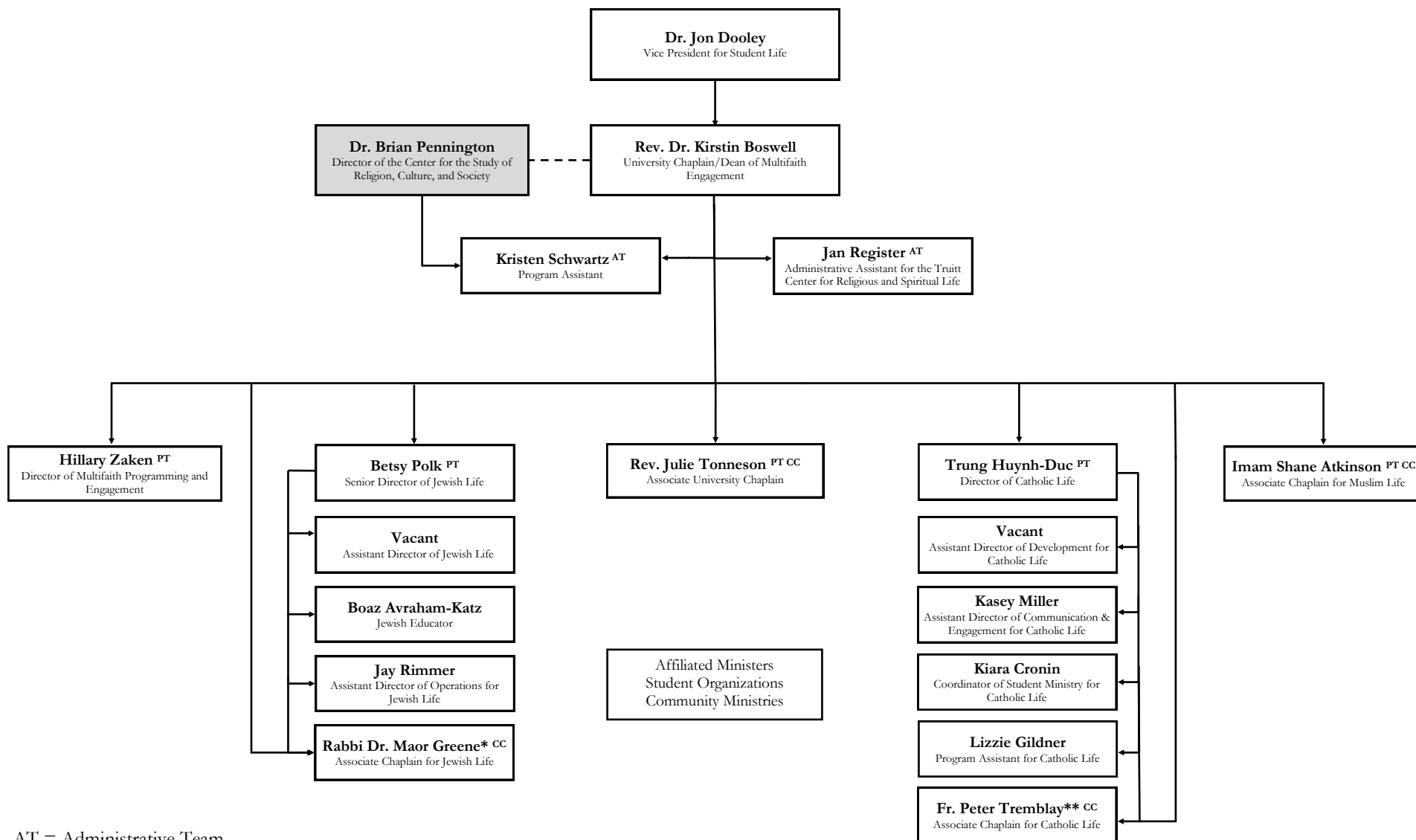
Effective September 26, 2025



ELON
UNIVERSITY

DIVISION OF
Student Life





AT = Administrative Team

PT = Programmatic Team

CC = Council of Chaplains

*Jointly reporting to Rev. Kirstin Boswell and Betsy Polk as a member of both the Council of Chaplains and Jewish Life Team

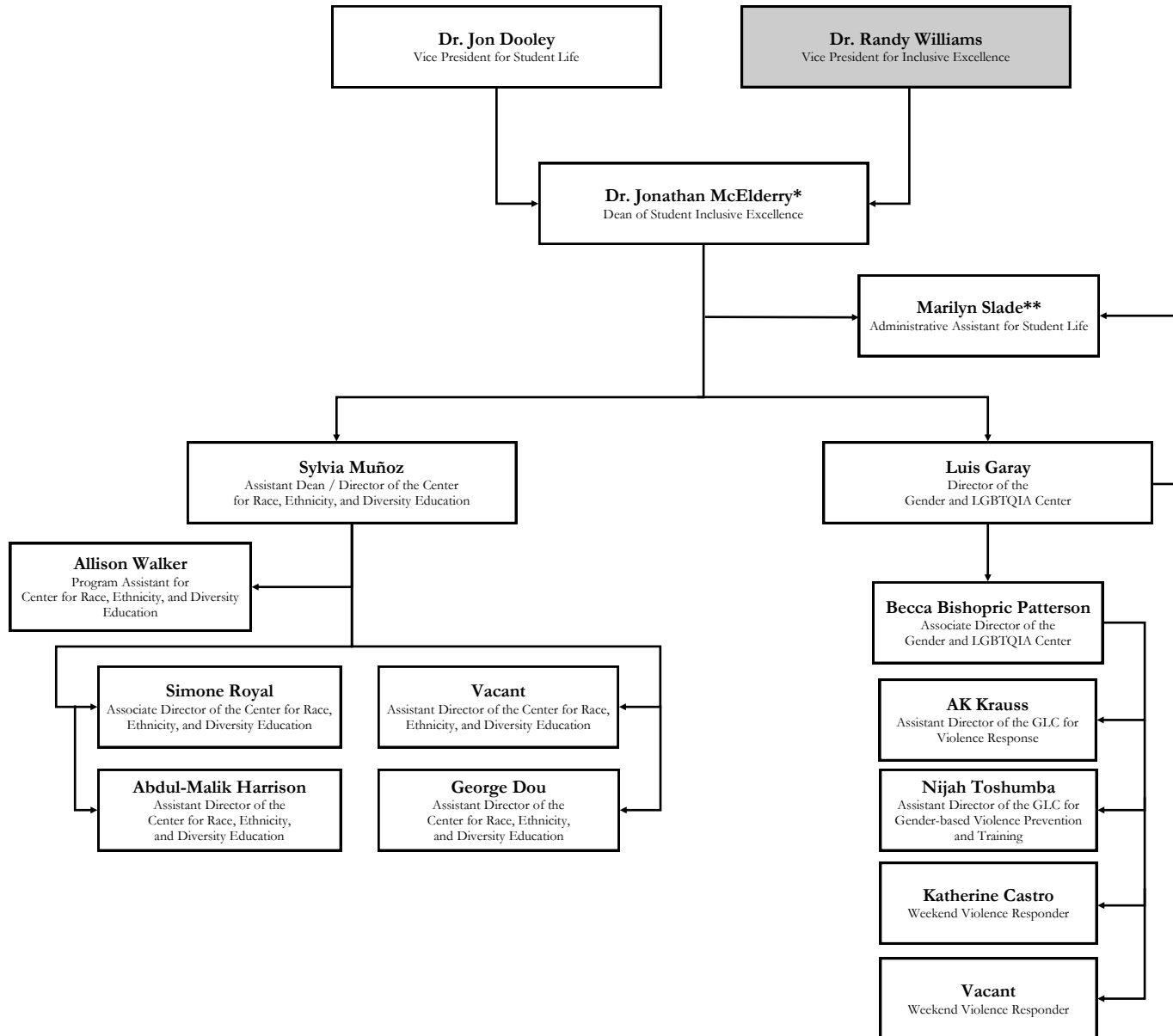
**Jointly reporting to Rev. Kirstin Boswell and Trung Huynh-Duc as a member of both the Council of Chaplains and Catholic Life Team

Effective September 26, 2025



ELON
UNIVERSITY

DIVISION OF
Student Life



* Jointly reporting to Student Life and Inclusive Excellence

** Jointly reporting to Student Inclusive Excellence and the GLC

Effective September 26, 2025