

EAST.

EAST NEIGHBORHOOD



EST 2018

2023 - 2024 Neighborhood Plan



Table of contents.

Welcome

Introduction

Our Team

Our Philosophy

Our Theme

Our Home

Our Traditions

Our Goals

WELCOME.



Welcome to East Neighborhood, where we empower every student to embrace their potential and foster a vibrant culture of civic engagement and social innovation. Embrace your unique identities, perspectives, and ideas as we collaborate and celebrate our diverse backgrounds, working to make a lasting impact together. Expect to be inspired, to step out of your comfort zone, and to collaborate with fellow students, faculty, and staff as we collectively strive for excellence and contribute to a better world. We are excited that YOU are a part of our community, welcome home!

Sincerely

Your Neighborhood Leadership Team

INTRO.

The East Neighborhood provides a vibrant and inclusive community for 350 students with 96% of our residents being first-year students. We offer an exceptional residential experience across five distinct and welcoming buildings: East A, East B, East C, Isabella Cannon Pavilion, and Kenan Honors Pavilion.

Within the East Neighborhood, you'll find four distinctive Living and Learning Communities (LLCs) that seamlessly integrate academics and residential life. These LLCs include Paideia (Civic and Political Engagement), the Service LLC, the Elon College Fellows LLC, and the Honors Pavilion LLC.



At the heart of the East Neighborhood lies our theme of Civic Engagement and Social Innovation.

Our Team.



Community Director
Jasmine Hill Evans
She/Her/Hers

Responsible for the overall residential experience of East.

jhillevans@elon.edu - - LaRose Commons 106

Faculty Director
Dinidu Karunanayake

Responsible for the intellectual life of the East.

dkarunanayake@elon.edu | (336)278-6488 | Alamance Building 320D



Faculty in Residence
Jane O'Boyle

Assists for the overall academic experience of East.

joboyle2@elon.edu | (336)278-5740 | Schar Hall- Communications Bld 206D

Program Assistant
Amy Vaughn

Assists with neighborhood logistics and operations.

avaughn4@elon.edu | (336)278-7316 | LaRose Commons 106



Our Team.

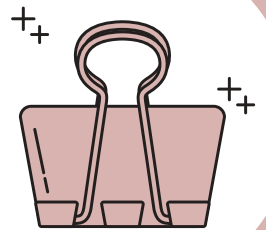


Sr. Resident Assistant & Resident Assistants

Responsible for fostering a safe and healthy environment that is supportive of student development.

Office Assistants

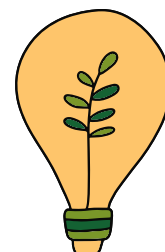
Assists with office logistics and operations



Living & Learning Assistants

Assists with faculty programming.

Eco Representative
Assists with sustainable initiatives in collaboration with the Office of Sustainability.



All student staff office hours will be held in LaRose Commons

Our Philosophy.

Residence Life

Mission

To integrate students' academic and residential experiences in order to further their intellectual, personal and community development as lifelong learners and responsible global citizens.

Vision

The residential campus program embodies the university's mission by creating communities that enhance student learning and engagement. Students interact with faculty, staff and fellow students in residential communities designed to extend learning beyond the walls of the classroom. Through planned and informal interactions, students encounter new ideas and perspectives, debate the larger questions of life, and practice active citizenship in a shared community.

Diversity

We embrace diversity in its broadest sense, including, but not limited to, diversity of age, disability, ethnicity, gender, gender identity, nationality, race, religion, sexual orientation, socioeconomic standing, and intellectual viewpoint.

Values

Community -- Mutual Respect -- Staff Development -- Service to Every Student

East Neighborhood

Mission

To be accountable members of our community, embody a spirit of service while prioritizing mind-body wellness and self-exploration.

Vision

Here in East Neighborhood we will discover our passions, nurture our potential, and embrace the responsibility we have to ourselves and others. Through intentional interactions, students will engage in a transformative journey where they will explore divergent perspectives and experiences, while being challenged to grow conscientiously and cultivate meaningful relationships within our community.

Diversity

We recognize and honor the diverse identities and unique lived experiences that each individual brings to our neighborhood. We are committed to fostering an inclusive environment where we are all valued, respected, and supported. Through our collective responsibility, we strive to create a more equitable and just community, campus, and society.

Values

Authenticity -- Courage -- Integrity -- Empathy
Accountability -- Curiosity -- Self-Awareness
Personal growth -- Altruism

Our Philosophy.

Our philosophy, theme, traditions, and goals are rooted in the **First-Year Community Development Model**



Wellness

Students will have the opportunity to explore the dimensions of wellness - community, emotional, purpose, physical, financial, and social well-being - as we promote holistic development and practice what healthy thinking and living looks like for us individually and collectively.

Social Responsibility

Students will learn about the University Honor Code and other policies they are expected to uphold. They will hone their skills related to self/peer-accountability, peer/social conflict mediation and intervention as we embrace the responsibility we have to ourselves and others.

Cultural Competency

Students will explore their identities, beliefs, and values as they journey toward greater self-awareness and social awareness, exploring the value and impact of difference on campus and in society.

Exploring Your Passions

Students will deepen their connection to their realized passions as well as discover and explore new passion areas through exposure to various (co)curricular experiences.

Our Theme.

Civic Engagement

“Civic engagement means working to make a difference in the civic life of our communities and developing the combination of knowledge, skills, values and motivation to make that difference. It means promoting the quality of life in a community, through both political and non-political processes”.

Civic Responsibility and Higher Education

Social Innovation

“Social innovation is the process of developing and deploying effective solutions to challenging and often systemic social and environmental issues in support of social progress.”

the Stanford Graduate School of Business

Engage | Reflect| Impact
with awareness & compassion

Our Home.

In & Around East Neighborhood



→ We have a fire pit located in the intersection of East Buildings A,B and C. Be on the lookout for our S'mores nights.



On the other side of the Jimmy Powell Tennis Center is the Academic Village which is home to Tuesday College Coffee from 9:40-10:20am.

We are located next to Jimmy Powell Tennis Center. Play a game or join in on a group fitness class on the courts.



We are located across the street from the Outdoor Fitness Court. The court has more than 30 pieces of workout equipment.



Two buildings down from Isabella Cannon is the Truitt Center, home to Thursday Numen Lumen from 9:50-10:20am in the Sacred Space.

In between the Academic Pavilions and East buildings A,B,and C is the Elon Hillel home to many of our Jewish-Identifying students.



Our Home.

Service LLC

The Service LLC introduces students to Elon by providing opportunities to volunteer with campus and community organizations, while providing a foundation for social justice education through discussion.

Advisor: Abigail Wiatrek

Paideia LLC

Paideia is also an opportunity to learn how to educate others on global, national, state, and local political issues and how other students can make a difference in our world, nation, state, and community.

Advisors: Bob Frigo & Andrew Moffa

College Fellows LLC (Cannon Pavilion)

The Elon College Fellow LLC is a co-ed community of Elon College Fellows where students take advantage of the wide range of academic pursuits within the community.

Advisors: Jill Auditori & Dan Burn

Living & Learning Communities (LLCs)



Honors Fellows LLC (Kenan Pavilion)

This community brings Honors students together to promote commitment to the Honors Program and success at Elon.

Advisor: Jane O'Boyle

Our Traditions.

Neighborhood Welcome BBQ

DONUT Stress

Rise Against Hunger

Service Saturdays

Grow Where You're Planted

Round the World Dinners

East Trick-Or-Treats

East Feast Giving

Soup & Society

Leadership Lunches

School Socks



Our Goals.

By the end of your first-year experience in East Neighborhood you will...

1. Form genuine connections and belonging with peers, faculty and staff through social, community, and wellness focused interactions.

2. Learn and implement skills to navigate interpersonal conflict in connection to roommate issues, community concerns, and navigating discussions in the greater society.

3. Connect specific programs, service opportunities, educational events and activities to our neighborhood's mission and be accountable members of our community, embody a spirit of service while prioritizing mind-body wellness and self-exploration.

4. Have a foundational and experiential understanding of Civic Engagement and Social Innovation; articulate what it means and its importance to the local and global society.

5. Identify campus resources within and outside of residence life to assist them in their residential campus experience and time at Elon.