

SCHOOL OF
HEALTH SCIENCES

M.S. IN PHYSICIAN ASSISTANT STUDIES

ELON.EDU/PA



CARING FOR THE TOTAL PATIENT

PHYSICIAN ASSISTANT STUDIES



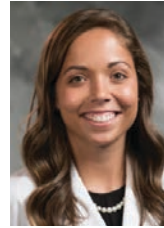
PHYSICIAN ASSISTANTS RANK #1 IN BEST HEALTHCARE JOBS

— U.S. NEWS & WORLD REPORT "BEST JOBS" RANKING, 2019

Prepare to be a leader in your field. Elon's 24-month, primary care-focused program employs a holistic approach to health care that emphasizes medical knowledge, interpersonal communication, patient care, professionalism and practice-and systems-linked learning.

You'll get to know your patients as individuals and learn to care for the whole person — body, mind and spirit. Dynamic classroom experiences, discussions and lectures create a foundation of knowledge that is complemented by hands-on work with patients and medical providers who will become mentors.

Graduates are ready to work in one of the most in-demand professions in the country. The Elon PA program intentionally emphasizes primary care as a means to produce graduates that care for the growing and aging population at a time when there is a shortage of physicians.



BRIANNA Marota '19

Although originally from the Northeast, Brianna now calls North Carolina home. Brianna is a physician assistant in Elon, North Carolina, and graduated with honors in 2019.

Each day at the Kernodle Clinic in Elon, she fulfills her passion for medicine by helping patients accomplish their health goals. Through education, lifestyle modifications and the use of supplemental illustrations and materials, she strives to help patients understand their diagnoses. She shares medical decision-making with patients as they work together to achieve optimal health and quality of life.

100%

**Passed the Physician Assistant
National Certifying Exam on their
first attempt (Class of 2019)**

ACCREDITATION

*The Accreditation Review Commission on Education for the Physician Assistant (ARC-PA) has granted **Accreditation-Continued** status to the **Elon University Physician Assistant Program** sponsored by **Elon University**. Accreditation-Continued is an accreditation status granted when a currently accredited program is in compliance with the ARC-PA Standards.*

*Accreditation remains in effect until the program closes or withdraws from the accreditation process or until accreditation is withdrawn for failure to comply with the Standards. The approximate date for the next validation review of the program by the ARC-PA will be **September 2026**. The review date is contingent upon continued compliance with the Accreditation Standards and ARC-PA policy.*



*Accreditation Review Commission on Education
for the Physician Assistant, Inc.*

HANDS-ON SYSTEMS-BASED CURRICULUM

PHYSICIAN ASSISTANT STUDIES



Elon's bold curriculum integrates hands-on clinical practica into a strong physical and social science foundation. The coursework focuses on engaged learning experiences and promotes close relationships with faculty mentors. Group discussions, hands-on clinical skills labs, simulated patient experiences, an innovative systems-linked curriculum and lecture and patient scenario discussions are a regular part of the learning experience. Students are also encouraged to attend the American Academy of PAs National Conference.

ACADEMIC PHASE

WINTER

Introduction to Medicine
Medical Physiology
Introduction to History and Physical Exam
Professional Issues Seminar

SPRING

Anatomy I
Pathophysiology I
Clinical Medicine I
Pharmacology I
History and Physical Exam I

SUMMER I

Anatomy II
Pathophysiology II
Clinical Medicine II
Pharmacology II
History and Physical Exam II

SUMMER II

Emergency Medicine
Surgical Care

FALL I

Special Populations
Reproductive Medicine and Sexual Health
Behavioral Medicine
Advanced Clinical Reasoning
Master's Project I

FALL II

Clinical Phase Preparation

CLINICAL PHASE

Primary Care
Pediatrics
Emergency Medicine
Inpatient Medicine
Surgery
Women's Health
Behavioral Medicine
Elective
Clinical Year Seminar 1
Clinical Year Seminar 2
Master's Project II

An Innovative Approach

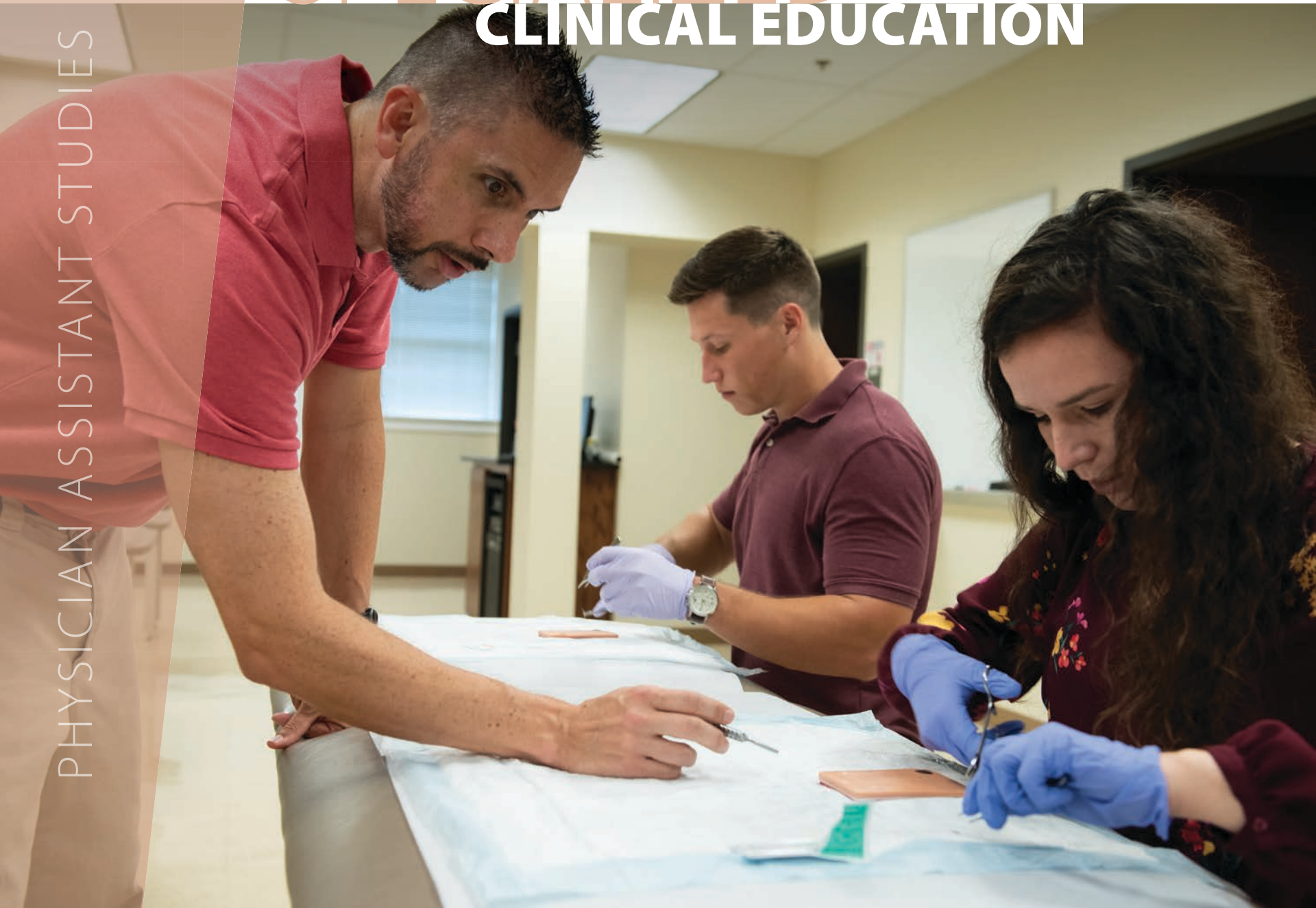
Elon is consistently recognized as a national leader in engaged learning. The Elon PA program intentionally infuses the curriculum with a variety of strategies to motivate students with different learning styles.

- ⚡ Human anatomy is illuminated through exercises in body painting. Students collaborate to reproduce the musculature on the “canvas” that is a classmate’s body, allowing photographs in the anatomical atlas to come to life.
- ⚡ Pharmacology review sessions are conducted in popular game formats (Pictionary, Clue, etc.) that solidify core concepts in creative ways.
- ⚡ Standardized patients provide a simulated clinical context for students to apply their newly acquired communication, physical examination and clinical reasoning skills in a supportive learning environment.



SPECIALIZED CLINICAL EDUCATION

PHYSICIAN ASSISTANT STUDIES



The second year of the Elon PA program is devoted to clinical education. You'll apply the lessons learned in your first year to real-world scenarios as you work with preceptors who will become your mentors. These professionals include physician assistants, medical doctors, doctors of osteopathy, nurse practitioners and certified nurse midwives.

The time you spend working with patients will help you see the world through different perspectives and understand the complex relationships among people, cultures, beliefs and environments.

You'll complete **6-WEEK ROTATIONS** in the following settings:

- ⚡ Adult primary care
- ⚡ Emergency medicine
- ⚡ General surgery
- ⚡ Inpatient medicine
- ⚡ Pediatrics

You'll complete **3-WEEK ROTATIONS** in the following settings:

- ⚡ Behavioral medicine
- ⚡ Women's health

Additionally, students complete one elective, which may include orthopedics, cardiology, hematology/oncology and other fields of medical study. Many students choose to complete their elective rotation in Belize through Elon's Global Learning Opportunities program.



MARK Benning '19

Mark chose Elon's PA program because of its reputation and collaborative peer learning environment.

"While studying, I easily connected with my cohort and was able to spend dedicated time with them in a great learning space. It felt like a second home," he says.

"Elon's PA program masters the ability to push you out of your comfort zone without going over the edge. When it came time for our clinical practice, my classmates and I found the learning curve much less daunting," he adds. "And, you will regularly hear from preceptors about how well prepared Elon PA students are for rotations."

Mark is now a practicing emergency medicine physician assistant at ApolloMD in North Carolina. He also served for five years as an engineer special projects officer (Reserves) for the U.S. Army Forces Command and was responsible for Special Projects in the Engineer Div, G-3/5/7.



EXPERT FACULTY



PHYSICIAN ASSISTANT STUDIES





Elon PA faculty are academically skilled and bring a balance of clinical expertise

and research experience to both the classroom and clinical skills courses. There are eight full-time faculty with terminal degrees in physician assistant studies, organizational leadership, medicine, pharmacy and public health. All physician assistant faculty members hold national certification and physician faculty possess board certification in obstetrics and gynecology. In addition, two part-time medical directors are actively engaged in the program.

The faculty work cooperatively to prepare Elon graduates to be clinician generalists. Faculty serve as role models in teaching, research, clinical practice and community service on campus as well as in the greater Elon University community. Faculty are also active in leadership positions with the Physician Assistant Education Association and various physician assistant and medicine professional organizations.



Creative Collaborations

At Elon, collaborative efforts are a healthy focus for students and faculty within the educational process.

⚡ **Crucial Conversations in Health Care** – The PA program partnered with Elon’s Anatomical Gift Program and Center for Design Thinking to host a program where students and community volunteers used design thinking practices to help better prepare for the crucial end-of-life conversations they will have as healthcare practitioners and patients.

⚡ **Memorial Service** – Each year, PA students collaborate with Doctor of Physical Therapy students and the Anatomical Gift Program to celebrate the lives and selfless contributions of the program’s anatomical donors.

⚡ **Interprofessional Education Events** – PA, DPT and undergraduate human services majors learn about team communication in health care through simulated patient scenarios with faculty.

⚡ **Global Engagement Research Forum** – PA, DPT and undergraduate engineering students showcase the results of collaborations across Elon’s campus, as well as the engaging experiences students have learned from while studying abroad.



A TRADITION OF SERVICE

PHYSICIAN ASSISTANT STUDIES



Four Elon PA students won full scholarships from the Health Resources and Services Administration, which supports medical professionals who want to work in the nation's most underserved rural and urban communities.

Elon PA students are well-rounded, empathetic global citizens. They're dedicated to making the world a better place and immersing themselves in their surrounding communities.



The Elon PA program hosts symposiums on issues such as aiding underserved populations both locally and abroad and creating meaningful relationships with vulnerable populations. These topics reflect the program's commitment to primary care, particularly in medically underserved areas.

Caring for All

PA students intentionally and repeatedly work with a broad range of patients to better equip them for life after graduation. Learning through work with patients opens your mind to new cultures, identities, traditions and beliefs, which will help you grow as a medical provider.

- ⚡ **Global Learning Opportunities (GLO)** is an off-campus clinical and/or service-learning experience that immerses students in culturally unique clinical settings. A program is offered in Punta Gorda, Belize.
- ⚡ Elon PA students regularly volunteer at the **Open Door Clinic of Alamance County**, which offers health care and medications to indigent and uninsured patients free of charge.
- ⚡ Elon is one of 20 institutions taking part in **The North Carolina Alliance for Health Professions Diversity**, a partnership to increase racial and ethnic diversity in the state's healthcare workforce.



JENNIFER Beard '15

During her PA program journey at Elon, Jennifer received the competitive National Health Service Corps Scholarship.

Administered by the federal Health Resources and Services Administration, the National Health Service Corps supports "qualified health care providers dedicated to working in areas with limited access to health care."

"Many of my choices in life have been influenced by my enthusiasm to serve underserved populations and communities. I chose to attend Elon University's physician assistant program because of its mission to support the local underserved community by fundraising and volunteering for the Open Door Clinic, joining local nonprofits to provide meals for those in need and sponsoring Girl Scout camps for disadvantaged youth to learn about healthy lifestyles. I enjoy providing primary health care to underserved communities because it brings more comprehensive medical treatment to areas and people who might never see a specialist."

Jennifer is now a certified physician assistant who practices family medicine at Central Carolina Community Family Care in Sanford, North Carolina.

The PA Program's annual "Great Cape Escape" 5K/10K/15K run (pictured left) raised more than \$21,000 last year and supports the Open Door Clinic of Alamance County, which provides free health care to those who cannot afford to pay.

A STRONG PROFESSIONAL OUTLOOK

PHYSICIAN ASSISTANT STUDIES



Physician assistants enjoy one of the lowest unemployment rates (1.2 percent)

in the country, according to U.S. News & World Report. The demand for PAs is expected to grow 31 percent by 2028, much faster than the average for other occupations, according to the U.S. Bureau of Labor and Statistics. The median annual wage for physician assistants was \$108,610 in 2019.

Class of 2019 Employment

The 38 graduates of the Elon PA 2019 program achieved a 100 percent first-time pass rate on the Physician Assistant National Certifying Exam. Of the 38 graduates, 22 remained in North Carolina and 100 percent are employed.

Graduates work in the following fields:

8

INTERNAL
MEDICINE

7

EMERGENCY
MEDICINE

7

SURGERY INCLUDING
TRAUMA, GENERAL,
NEURO, VASCULAR

5

ORTHOPEDICS

5

PEDIATRICS

2

CARDIOLOGY

2

GASTROINTESTINAL

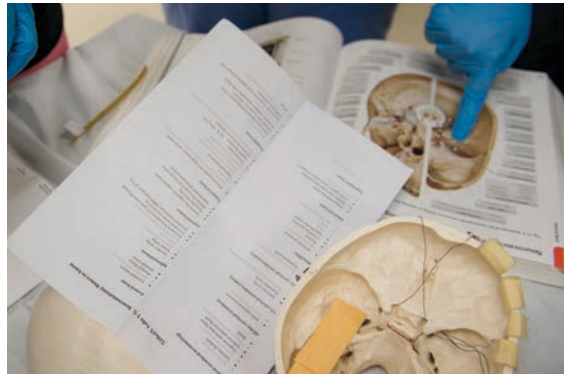
2

OTHER

WORLD CLASS FACILITIES

PHYSICIAN ASSISTANT STUDIES





The Gerald L. Francis Center was designed to meet the specifications of School of Health Sciences faculty and staff. The facility includes 50,000 square feet dedicated to the Master of Science in Physician Assistant Studies program and the Doctor of Physical Therapy program (DPT).

The building is designed as a premier teaching and learning facility. Dedicated PA teaching space includes:

- Classrooms
- A clinical skills laboratory
- Five simulated exam rooms
- A cardiopulmonary auscultation lab
- Fresh tissue/clinical procedure lab
- Five small group study rooms
- Additional equipment includes a Harvey™ Cardiopulmonary simulator, high definition cameras for use with clinical skills examinations, and state-of-the-art classroom technology.

Each educational space is equipped with LCD monitors, digital video projectors and/or digital video cameras to augment the learning environment. PA faculty, students and staff benefit from an energized and collaborative relationship with Elon's DPT program. The two departments frequently engage in shared learning opportunities and benefit from common facilities, including a human donor anatomy lab, student lounge areas, fitness center and locker facility.

ELON UNIVERSITY

Office of Graduate Admissions

P.O. Box 398
Elon, NC 27244

336-278-7600

gradadm@elon.edu

📘 ElonPhysicianAssistant

Return Service Requested

Nonprofit Organization

US Postage

PAID

Permit No. 1

Elon, North Carolina

ELON.EDU/PA

APPLY

Elon enrolls a class of 38 students each January. Apply online using the Central Application Service for Physician Assistants (CASPA) – [CASPA.LIAISONCAS.COM](https://caspa.liaisoncas.com). Visit [ELON.EDU/PA](https://elon.edu/pa) for a complete list of requirements and details about the admissions process.

ABOUT ELON

Elon has built a national reputation as a premier student-centered arts and sciences university that values strong relationships between students and their faculty and staff mentors. Elon's more than 7,000 students prepare to become the resilient, ambitious and ethical leaders the world needs, putting their knowledge into action on campus, in the community and around the globe. Elon is ranked by U.S. News & World Report as the **#84 National University** with a #1 ranking for study abroad, a #2 ranking for teaching excellence and a #11 ranking for innovation. Elon also **leads the nation** in the U.S. News spotlight on **eight academic programs that lead to student success.**

