



LIVE

your best life

EAT

great food



DO

cool stuff



ELON
UNIVERSITY

ELON



Welcome to Life at Elon

Once on campus, it won't take you long to realize how much there is to do outside of the classroom. With more than 284 clubs and organizations, plenty of places to eat, fun activities on campus and adventures off campus, including shopping, attending concerts or hiking at nearby parks and trails, staying busy is easy.



HOUSING APPLICATION

Your Elon email account is activated 24 to 48 hours after your enrollment deposit is received. You can access the housing application in your Acorn Account at that time. (Tip: Be honest on the application and trust the process.)

Living at Elon

Every detail of Elon’s residential campus is designed to create the nation’s finest environment for learning. There are eight neighborhoods on campus designed to advance learning through various stages of a student’s college career. elon.edu/residencelife

Home Sweet Home

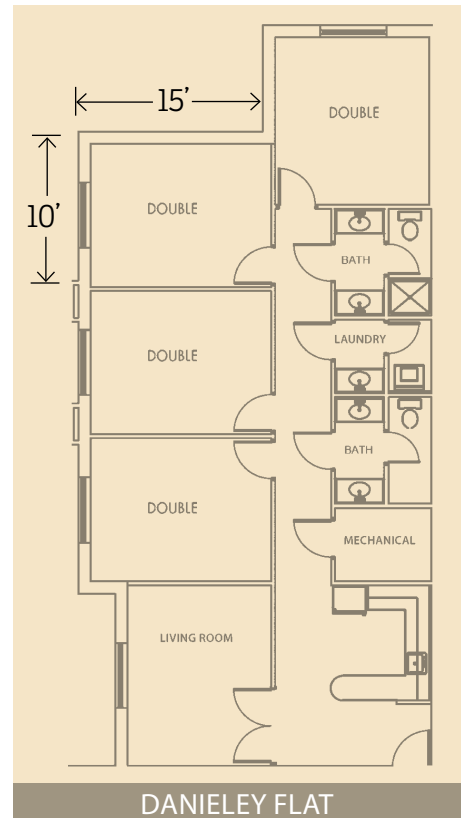
As a first-year student, you will live in one of five neighborhoods. This is where you will meet lifelong friends, hold study sessions, have deep conversations and laugh until the wee hours of the night. This will truly be your home away from home.

"I love the friends I've made on the first floor of Sloan in the Communications Living Learning Community. Living in Sloan has been so amazing. It's great that there are hammock hangers right outside, and that we are surrounded by the oak trees."

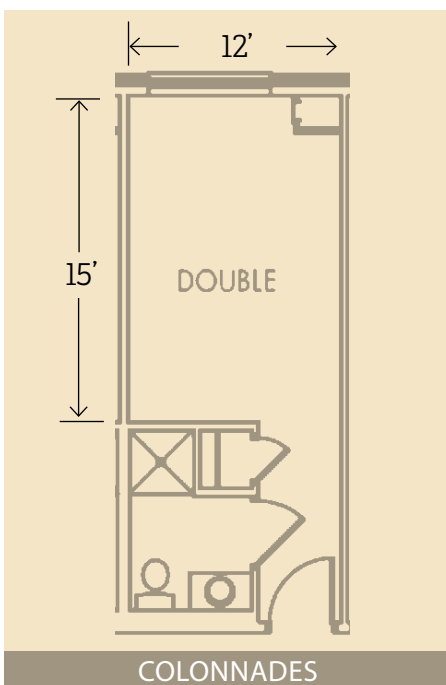
– Ana Brett Blinston, first-year student



COLONNADES



DANIELEY FLAT



COLONNADES

Colonnades
NEIGHBORHOOD

Buildings: Story Hall, Moffitt Hall, Kivette Hall, Staley Hall and Colonnades E

Student population

- 428 residents
- 50% first-years
- 25% sophomores
- 25% juniors/seniors

Room style: Double, single and triple rooms; pod suites; stand-alone singles

Room amenities: XL twin bed, desk, chair, closet, carpet

All buildings: washers and dryers (Phoenix card), air conditioning, Wi-Fi, trash and recycling areas, elevator, printing stations, lounges, community kitchens

**Room dimensions are accurate for most double rooms. For more complete information about dimensions and amenities visit elon.edu/reslife.*

Danieley Center
NEIGHBORHOOD

Buildings: 8 flat buildings with 8 flats in each and 8 apartment buildings with 8 apartments in each

Common building: Violet Hoffman Daniel Commons

Common building amenities: Multipurpose lounge, Qdoba Mexican Grill, Einstein Bros. Bagel, game room, fireplace

Student population

- 725 residents
- 11% first-years
- 65% sophomores
- 24% juniors/seniors



DANIELEY

Room style: Flat styles include four double rooms

Flat amenities: Two bathrooms; kitchen area with two barstools and refrigerator only; common room with an armchair, couch, table and four chairs; laundry area

Room amenities: XL twin bed, desk, chair, wardrobe

EAST NEIGHBORHOOD

Buildings: Three residence halls and the Isabella Cannon Pavilion and Kenan Honors Pavilion in the Lambert Academic Village

Student population

349 residents
95% first-years
5% sophomores/juniors/seniors

Room style in residence halls:

Double room

Residence hall room amenities:

XL twin bed, desk, chair, closet, dresser

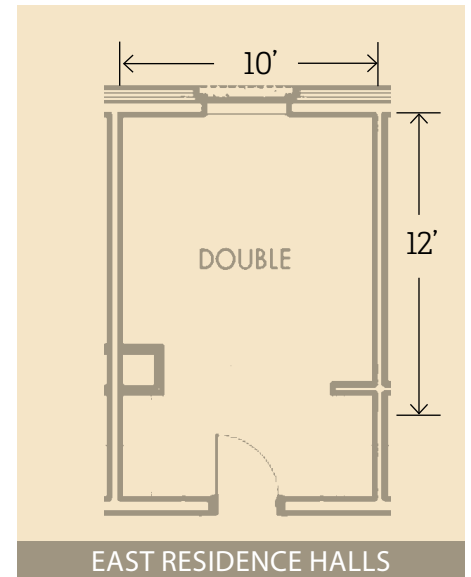
Room style in the pavilions:

Double

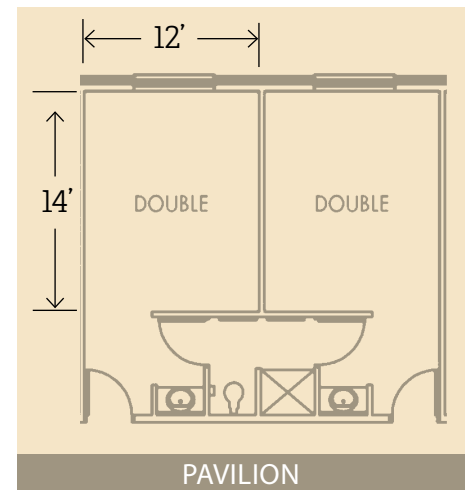
Pavilion room amenities:

XL twin bed, desk, chair, wardrobe, sink

All buildings: Washers and dryers (Phoenix card), air conditioning, Wi-Fi, trash and recycling areas, study areas, kitchenettes



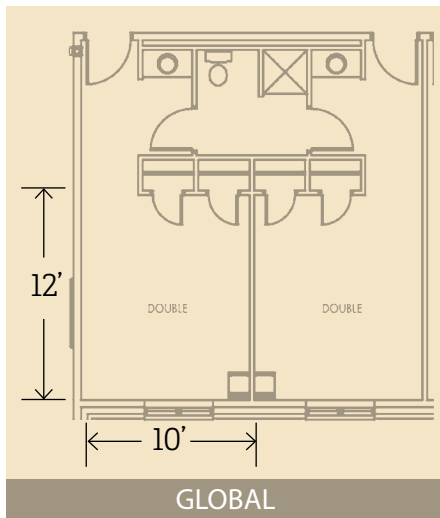
EAST RESIDENCE





GLOBAL

Global NEIGHBORHOOD



GLOBAL

Buildings: Building A, Russel B. Gill Hall, G. Smith Jackson Hall, Nan P. Perkins Hall, Building E

Common building: Global Commons

Common building amenities: Isabella Cannon Global Education Center, multimedia rooms, digital theater, Steep Tea Bar, Great Hall (perfect spot to study) and Esports Lounge

Student population

- 579 residents
- 55% first-years
- 29% sophomores
- 16% juniors/seniors

Room style: Double and single rooms; single pods

All buildings: Washers and dryers (Phoenix card), air conditioning, Wi-Fi, trash and recycling areas, study areas, kitchenettes

Historic NEIGHBORHOOD

Buildings: Carolina, Hook, Brannock & Barney (HBB), Sloan, Smith, Virginia and West halls

Room amenities: XL twin bed, desk, chair, closet, carpet

All buildings: washers and dryers (Phoenix card), air conditioning, Wi-Fi, smoke free, trash and recycling areas, lounges, community kitchens

Common building:

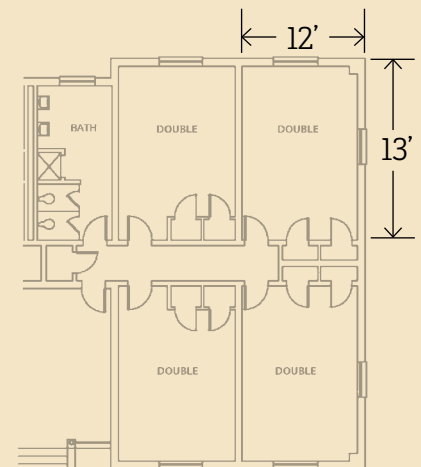
LaRose Student Commons

Common building amenities: Full-size kitchen, study and activity areas, game room with pool table, table tennis and video game area

Student population

- 631 residents
- 95% first-years
- 5% sophomores/juniors/seniors

Room style: Double room



HOOK, BRANNOCK & BARNEY



VIRGINIA

HOOK, BRANNOCK & BARNEY

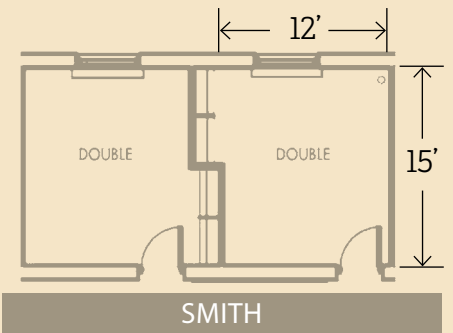
Room amenities: XL twin bed, desk, chair, closet and four double rooms share a bathroom

CAROLINA (all female)

Room amenities: XL twin bed, desk, chair, closet and shared hall bathroom



VIRGINIA



SMITH

VIRGINIA and SLOAN

Room amenities: XL twin bed, desk, chair, closet, sink and two double rooms share a bathroom

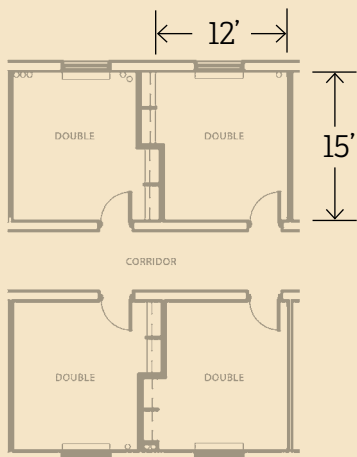
SMITH (all male)

Room amenities: XL twin bed, desk, chair, closet and shared hall bathroom

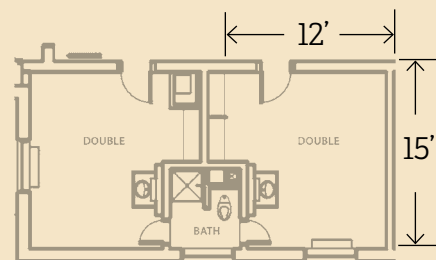
WEST (all female)

Room amenities: XL twin bed, desk, chair, wardrobe and shared hall bathroom

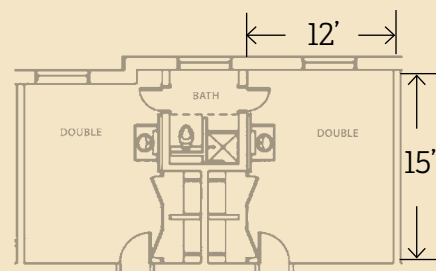
All buildings: washers and dryers (Phoenix card), air conditioning, Wi-Fi, trash and recycling areas



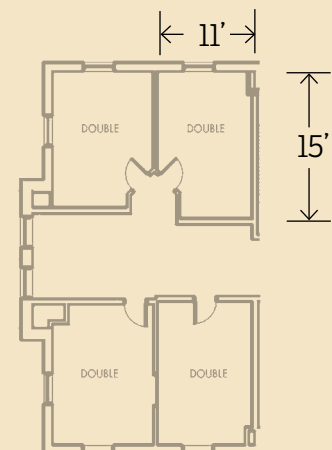
CAROLINA



VIRGINIA



SLOAN



WEST

On-campus neighborhoods for sophomores, juniors and seniors



LOY CENTER

Houses: 19 (You must be in a fraternity or sorority to live here)

Student population

- 176 residents
- 85% sophomores
- 15% juniors/seniors

THE OAKS AND PARK PLACE NEIGHBORHOOD

The Oaks buildings: Williams Hall, Council Hall, Building C, Building D, Brown Hall and Sullivan Hall

Student population

- 524 residents
- 26% sophomores
- 74% juniors/seniors

Park Place buildings:

45 apartments

Student population

- 117 residents
- 27% juniors
- 73% seniors



STATION AT MILL POINT/CREST NEIGHBORHOOD

Station at Mill Point buildings: 24

Student population

- 318 residents
- 15% juniors
- 85% seniors

Crest buildings: 4

Student population

- 169 residents
- 50% sophomores
- 50% juniors/seniors



LIVING LEARNING COMMUNITIES [ELON.EDU/LLC](https://elon.edu/llc)

You may apply to join a Living Learning Community (LLC), which involves groups of students living in proximity, sharing similar interests, and interacting academically and socially around a unifying theme, interest, affinity group, or (inter)disciplinary focus. **Consistently ranked #1 by U.S. News & World report**, our LLCs provide a chance to engage with expert faculty and professionals; attend events, programs and talks from guest speakers; participate in service experiences; and meet new friends who share a common interest.

Alcohol and Substance-free Housing for Elon Students (ASHES)
Global C, 1st floor

African Diaspora LLC: Exploring Blackness Across the Globe
Global C, 4th floor

Business
Colonnades D, 3rd Floor

Communications
Sloan, 1st Floor

Creative Arts
Global E, 2nd Floor

Elon College Fellows
Isabella Cannon Pavilion

Examining Disparities in Access to Education
Colonnades D, 1st Floor

Gender and Sexuality
Colonnades A, 2nd Floor

Honors Floor
Colonnades C, 2nd Floor

Honors Pavilion
Kenan Honors Pavilion

Innovation
Colonnades E, 1st Floor

International
Global A, 2nd Floor

Outdoor Learning
Virginia, 1st Floor

Paideia: Politics and Active Citizenship
East C, 2nd Floor

Performing Arts
Global B, 2nd Floor

Polyglot
Global D, 1st Floor

Service
East C, 1st Floor

Sport Management and Media
Sloan, 2nd Floor

STEM
Colonnades E, 2nd Floor

Sustainable Living
Colonnades C, 1st Floor

ACCESSING ACCOMMODATIONS

Most residential neighborhoods have accessible room options. Visit elon.edu/klc for information about disabilities resources.

CAMPUS SAFETY Evening Security

The office of Safety and Police is available from 7 p.m. to 7 a.m. to accompany students as they walk to and from on-campus locations.

E-Rides

The E-Ride program provides one-way transportation for students from on-campus to off-campus residences and from on-campus locations to other on-campus locations within a mile and a half radius from Moseley Center. E-Rides operates from 7 p.m. to 2 a.m. Monday – Thursday and 7 p.m. to midnight on Friday.

Dining at Elon

From locally sourced, simple ingredients to weekly menus created by on-site chefs, restaurant takeovers, food trucks, impromptu pop-ups, teaching kitchens, chef's tables and farm table dinners, Elon offers a variety of dining experiences, ranging from all-you-can-eat dining to quick takeaway meals. Our three dining halls also cater to special diets, featuring allergen solutions alongside many made-without-gluten, vegetarian, vegan and healthy options. If you feel like eating out, there are several restaurants downtown to satisfy your cravings. elondining.com

"My favorite dining hall is definitely Clohan. I also spend time at the places downtown like Oak House and The Root. My friends and I try to go there once a week for dinner.

– Olivia Grady, first-year student





CLOHAN HALL

Located near Colonnades and Danieley neighborhoods, Clohan Hall features made-to-order sandwiches and scratch-made pizza fresh off the hearth. The Burger Joint offers grilled-to-order burgers, and the Veggie Café serves plant-based meals, a mezze bar and stir fry station. Feast on a shrimp and broccoli stir fry or Korean-style wings. Enjoy a bacon, apple and apricot PB&J.

Retail locations

Fountain Market
Boars Head Deli

CAN I KEEP KOSHER?

Clohan Hall has a section of the kitchen where vegan/vegetarian foods are prepared with dedicated pots and pans. Grab-and-go strictly Kosher options are also available in select dining halls. Learn more at elon.edu/hillel.



McEWEN DINING HALL

The open-concept kitchen and bakery at McEwen make it easy to watch the chefs preparing your food. Al Dente serves fresh pasta every day. Daily chef's specials such as Chinese, red-braised pork or mojo skirt steak with chimichurri and herb roasted potatoes are served at the Chef's Counter. Sample the tasty pastries at Crumb & Cream.

Retail locations

Billy D's Fried Chicken
Village Juice & Kitchen





LAKESIDE DINING HALL

Enjoy cuisines from all over the globe at Lakeside's unique World and Street Food stations. The Taqueria offers a variety of tacos on fresh corn tortillas. Extensive salad and yogurt bars, made-to-order breakfast scrambles and fresh desserts made by talented pastry chefs are also featured. Feast on red wine marinated pork with pickled apricot salsa, lemon garlic chicken with Greek potato salad or oven-baked vegetables with harissa.

Retail locations

Winter Garden Café
Flat Out
Biscuitville
Freshii

Sustainability

From trayless dining to reusable to-go containers, auditing food waste, recycling used cooking oil into biodiesel, composting and compostable disposables, Elon Dining follows sustainable practices.

ALLGOOD STATION AT LAKESIDE

Featuring specially crafted menus made without the top nine allergens within a separate kitchen space.



FARM TABLE DINNERS

Offered a few times a semester, Elon Dining hosts farm table dinners in various scenic spots on campus. Interested students are randomly selected through social media. The free multi-course meals, which begin with an amuse-bouche (a single-bite hors d'oeuvre) and ends with dessert, are very popular.

Popular Elon Restaurants

(many are owned by Elon alumni)

- MaGerks Pub and Grill
- Pandora's Pies
- Smitty's Homemade Ice Cream
- The Root
- Tangent Eat and Bar
- Simply Thai Restaurant
- The Fat Frogg

Coffee Shops

- Acorn Coffee Shop (Belk Library)
- The Oak House (downtown)
- Irazu (Moseley Student Center)

Food Truck Frenzy

Once a semester, more than a dozen food trucks from across North Carolina serve up their best dishes during Food Truck Frenzy.



Doing at Elon



Elon students enjoy getting involved and participating in activities on and off campus. Whether you want to start your own intramural team, kayak down the Haw River, participate in a campus tradition, stay fit or run for student government, there is plenty to do at Elon. elon.edu/u/student-involvement

“In the fall, a group of friends and I banded together to make the Pocket Frogs intramural flag football team. Everyone in the group had a phenomenal time playing the game, and our only regret is not doing it sooner.”

– Ben Puchyr, senior

GET INVOLVED

A few days after classes start during your first semester at Elon, you will get a firsthand look at all there is to do on campus at the Org Fair on Young Commons. It's a great place to meet new friends.

Below are just a sample of the more than 284 clubs and organizations you can join at Elon:

Academic and Professional

Anthropology and Sociology Club
Biology Club
Cinelon Productions

Athletics

Elon Fellowship of
Christian Athletes
Student Athlete Advisory
Committee

Club Sports

Climbing
Equestrian
Esports
Ice Hockey

Competition

Mock Trial
Model UN
Quiz Bowl



Cultural

Asian-Pacific Student Association
Black Student Union
German Club

Honorary

Alpha Psi Omega
Beta Beta Beta
Omicron Delta Kappa

Media

Elon News Network
Limelight Records
Phi Psi Cli

Performance

Elon Irish Dance Club
Melanated Melodies
Please Clap

Political

College Democrats
College Republicans
Student Government Association

Service & Advocacy

Autism Speaks U
Elon Volunteers!
Relay for Life

Spirituality

Catholic Campus Ministry
Elon Muslim Society
Hillel





Work It Out

Campus Recreation & Wellness has multiple facilities in the heart of campus at Koury Center, including the Stewart Fitness Center, Jordan Gym, racquetball/squash courts, group exercise studios and Beck Pool. On South Campus, there is South Gym and the driving range, which is open to all Phoenix Card holders. There is also a putting and chipping green.

Division I Athletics

The Phoenix compete in the Colonial Athletic Association

MEN

- Baseball
- Basketball
- Cross Country
- Golf
- Football
- Soccer
- Tennis

WOMEN

- Basketball
- Cross Country
- Golf
- Indoor Track
- Lacrosse
- Track and Field
- Soccer
- Softball



STAY ACTIVE

Join one of 18 intramural sports or 21 club sports such as floor hockey, trenchball, wiffleball, sand volleyball, ice hockey, lacrosse, tennis, climbing, equestrian, basketball and table tennis.



ELON EXPRESS

TAKE A FREE RIDE

The Elon Express offers students transportation around campus, to downtown Burlington and shopping centers nearby. The buses use biodiesel fuel, which is a blend of vegetable and animal oils with ultra-low sulfur diesel fuel.

THE MAKING OF A STAR

Many of Elon's Performing Arts alums land roles on Broadway, hit films and TV shows, including "Hamilton," "Tina," "Dear Evan Hansen," "Masters of the Universe," "Marvelous Mrs. Maisel," "The Flash" and "Grey's Anatomy," to name a few.



Elon alum Grant Gustin as the Flash on the CW

Take in a Show

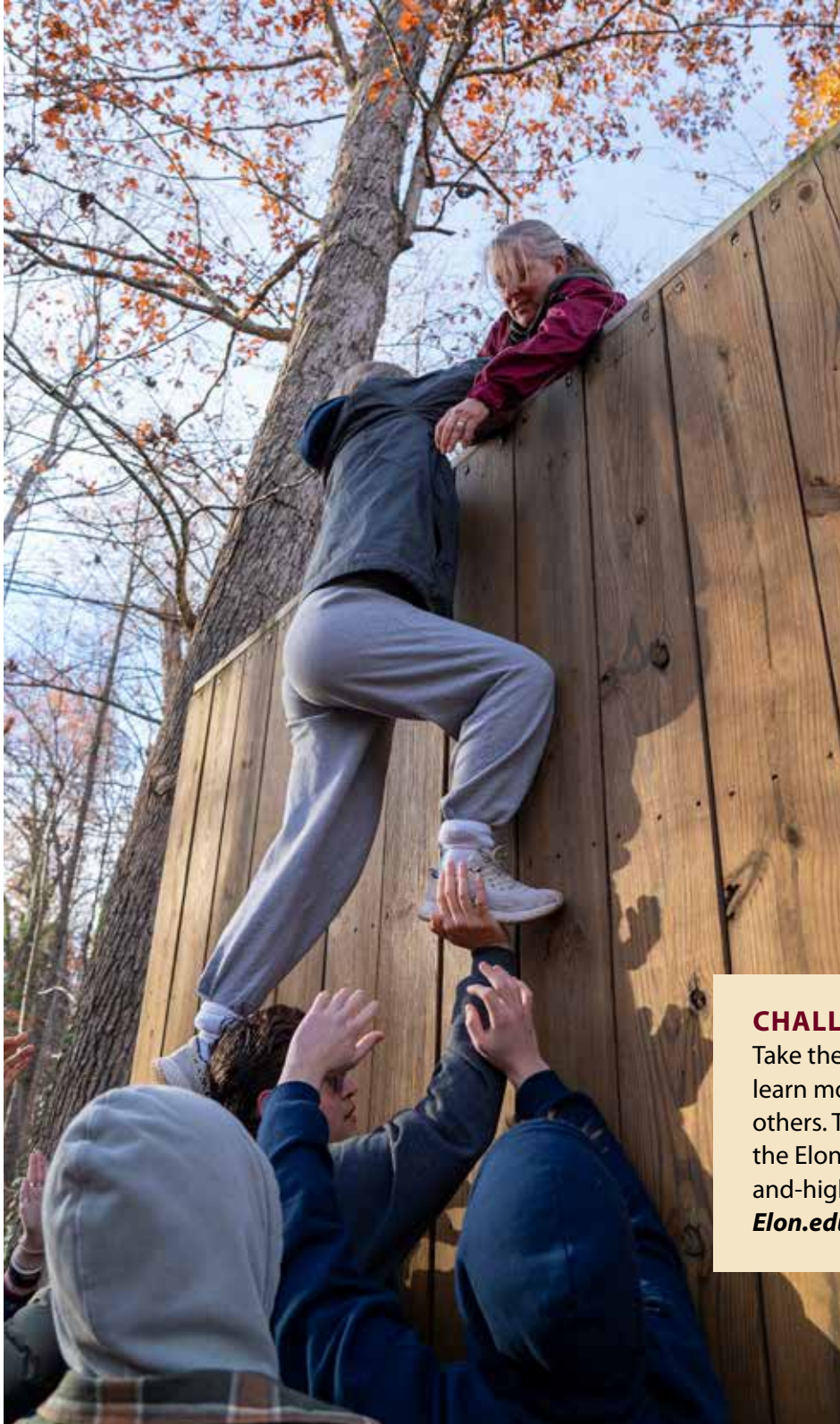
Enjoy a wide array of free cultural programs from lectures to ballets, art exhibitions, comedy shows, concerts, musical and theatrical performances, many of which are performed by students in Elon's performing arts, art and music departments.



Never a Dull Moment

Watch a free hit movie at Turner Theatre, enjoy S'mores with Elon Outdoors, play trivia, participate in karaoke, attend a concert on campus or take in a movie, comedy show and more with Late Night at Elon in Moseley Student Center.





VENTURING OFF CAMPUS

Located in central North Carolina, Elon is just minutes from the interstate with easy access to the mountains (2.5 hours away) and the beach (3 hours away). Closer to Elon, there's a host of parks, trails, rivers and lakes to keep outdoor enthusiasts busy.

Get Outdoors

Go on an adventure with Elon Outdoors, which offers a wide range of outdoor opportunities, including kayaking, whitewater rafting, hiking, mountain biking, backpacking, horseback riding, surfing and swimming.

Go Shopping

Alamance Crossing, an outdoor mall, is just minutes from Elon with more than 60 retail shops and restaurants.

CHALLENGE YOURSELF

Take the Elon Challenge and learn more about yourself and others. The course, located at the Elon Lodge, has both low-and-high rope activities.

Elon.edu/recwell

CELEBRATE ELON TRADITIONS



Acorn to Sapling

Students receive acorns to mark the beginning of their Elon journey. Upon graduation, they receive oak saplings to celebrate their personal growth.

College Coffee

College Coffee is held every Tuesday morning. The community comes together for conversation over coffee and pastries.

Cram Jam

Late-night pancakes, bacon and eggs are served to you during finals week by professors and staff who (might) feel a little bit guilty for assigning you that cumulative final exam.

Festival of Lights and Luminaries

This event kicks off the holiday season and features 2,000 luminaries that line the walkways in the heart of campus.



Holi

Holi, the Hindu Festival of Color, marks the end of winter and the beginning of spring. At Elon, we celebrate with a traditional powdered paint-throwing extravaganza.

Holidays at Maynard House

Right before winter break, all students are invited to Maynard House, the residence of Elon's president, to celebrate the holiday season with

good food, live music and a photo with President Connie Ledoux Book.

Numen Lumen

Held every Thursday morning, Numen Lumen is a time and space for reflection with a musical or artistic performance provided by students, faculty, staff or special guests.

Turning 21 Dinner

Students who turn 21 celebrate with their campus mentors and a special dinner to honor the important milestone. Faculty and staff attending offer inspiration and share the wisdom of their life experiences. Each program ends with the toast: "The best is yet to be."



elon.edu/traditions

ELON UNIVERSITY

Office of Admissions and Financial Aid
PO Box 398
Elon, NC 27244

336-278-3566
admissions@elon.edu

Nonprofit Org
US Postage
Paid
Elon, NC
Permit No. 1

