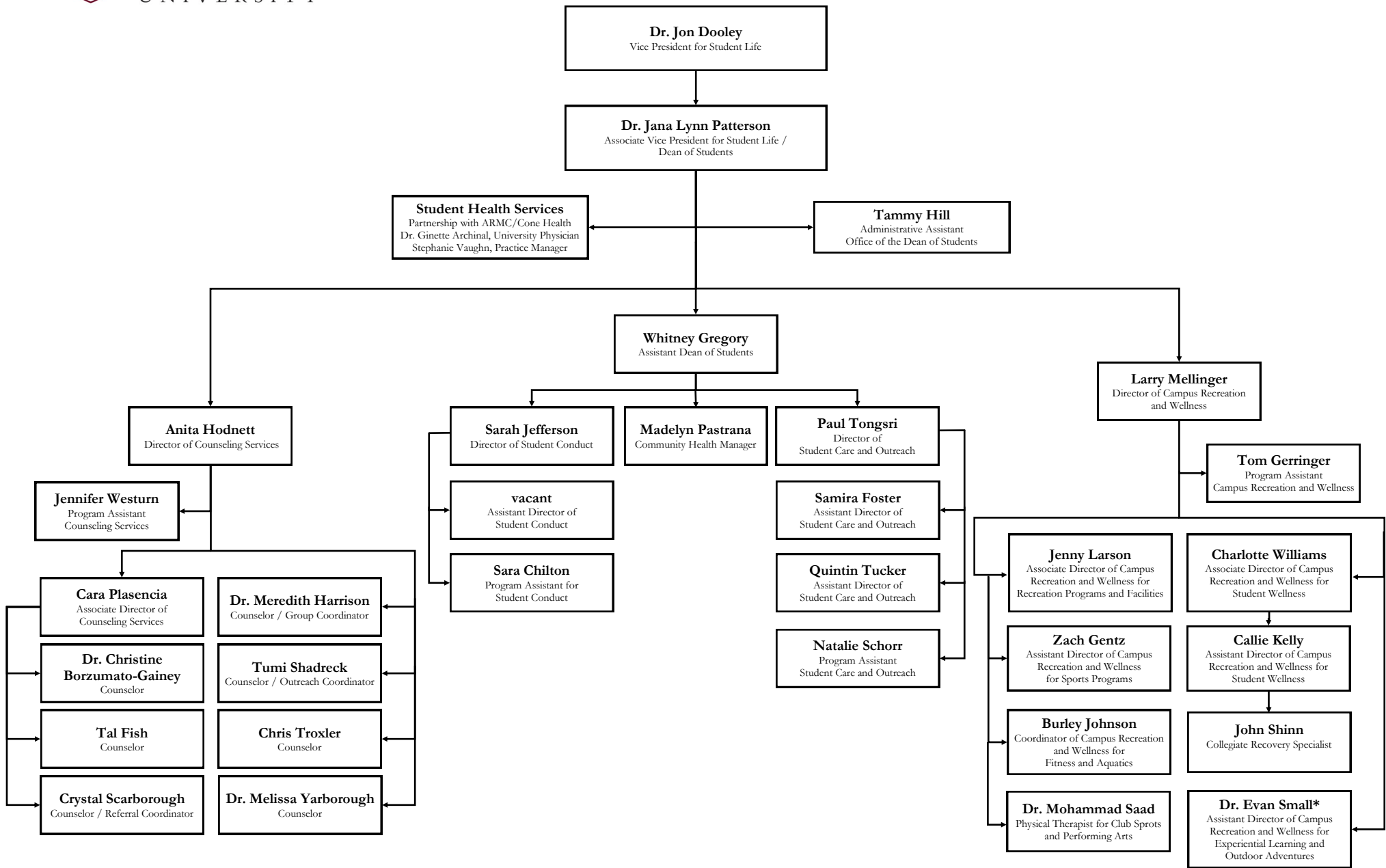
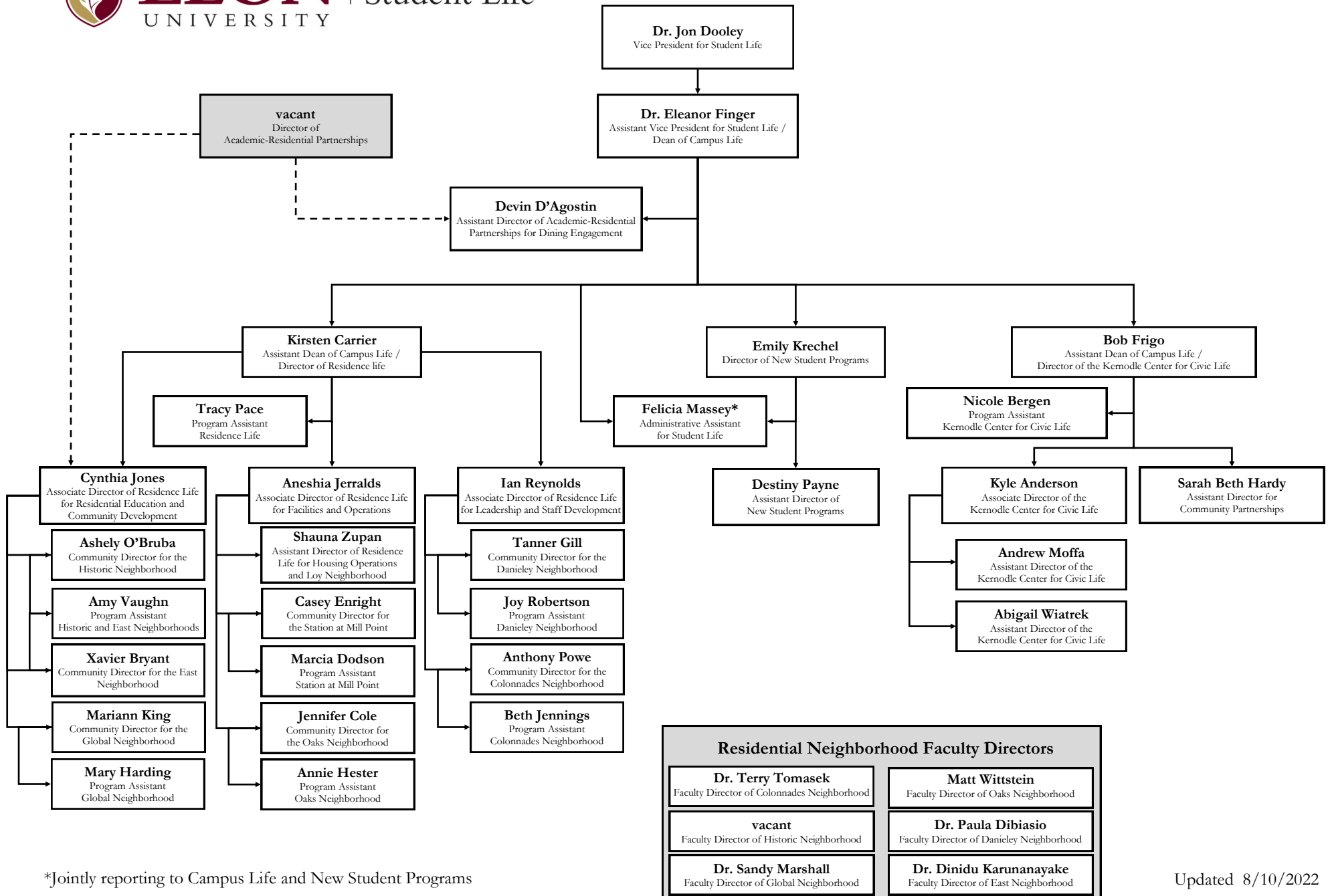


*Jointly reporting to Student Life and Inclusive Excellence

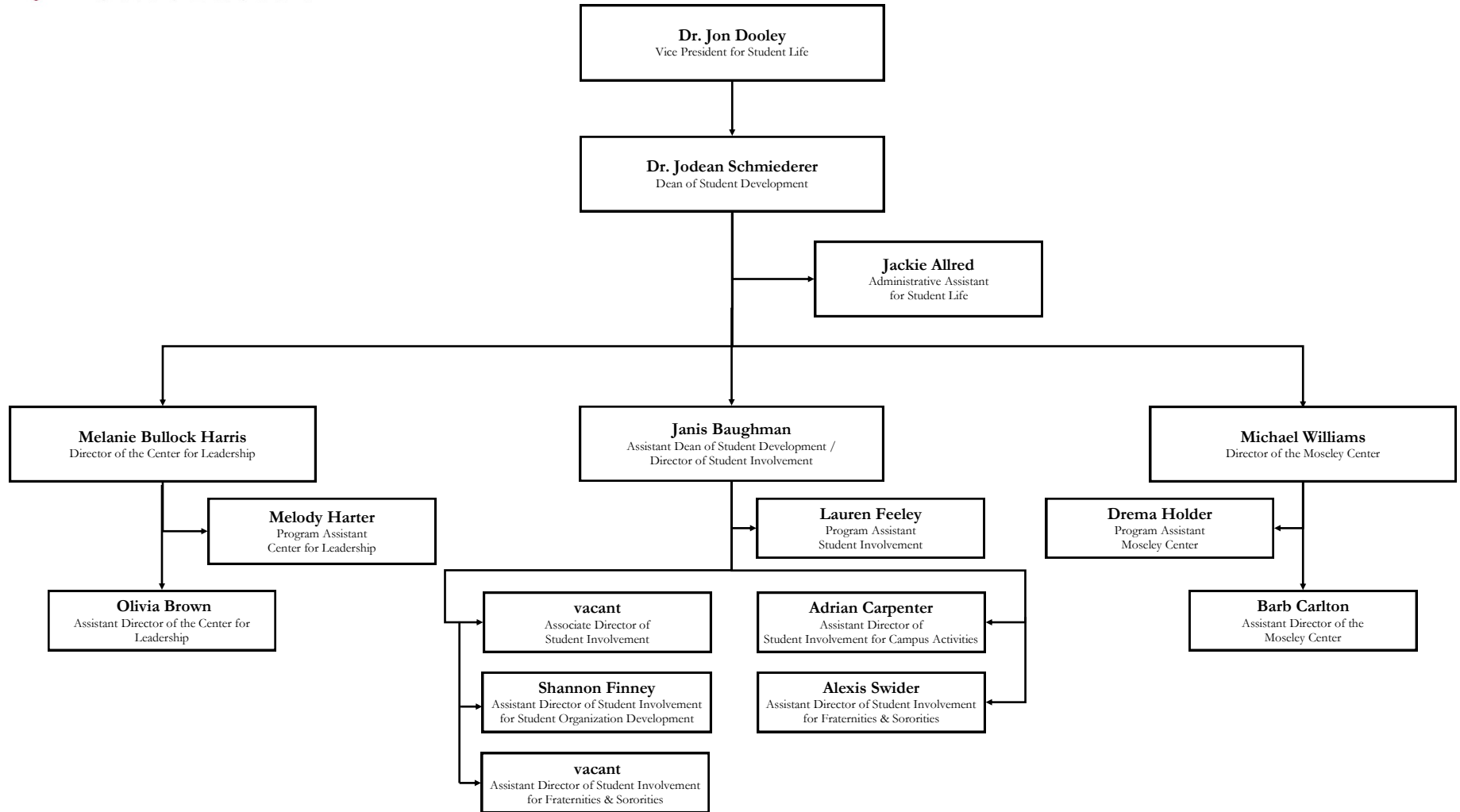
**Jointly reporting to Student Life and University Communications

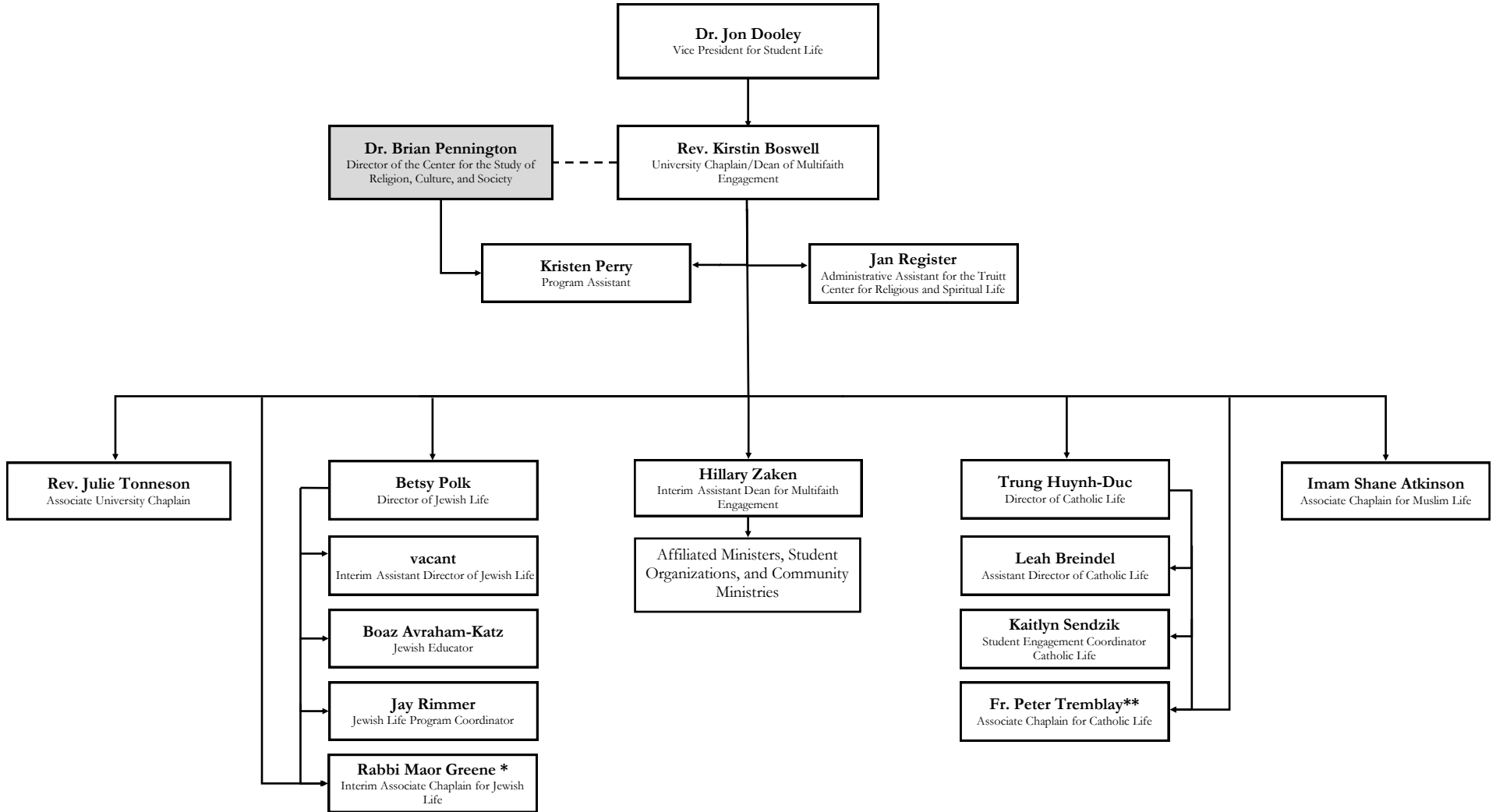


*Jointly reporting to Student Life and the Dr. Jo Watts Williams School of Education



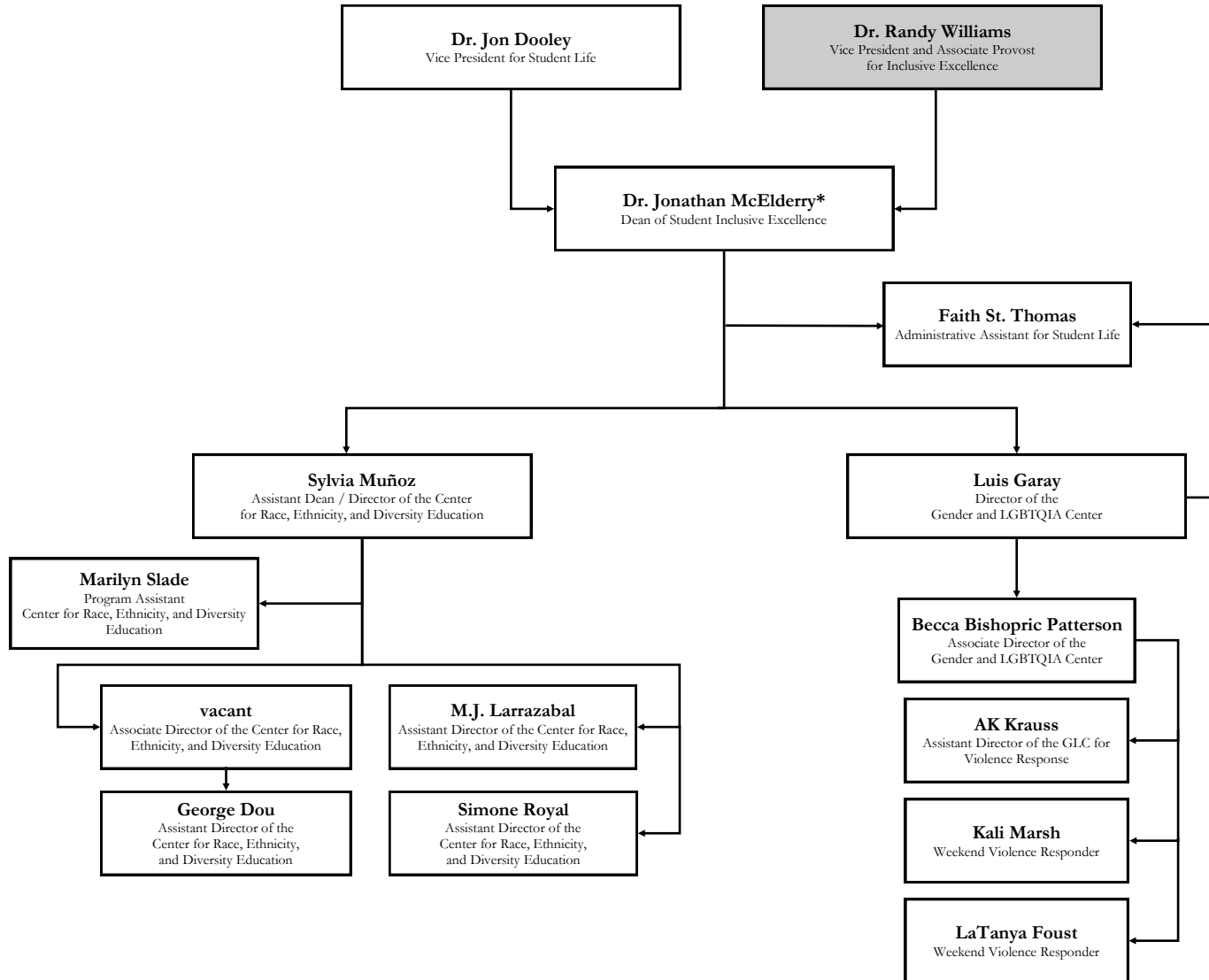
*Jointly reporting to Campus Life and New Student Programs





*Jointly reporting to Rev. Kirstin Boswell and Betsy Polk as a member of both the Council of Chaplains and Jewish Life Team.

**Jointly reporting to Rev. Kirstin Boswell and Trung Huynh-Duc as a member of both the Council of Chaplains and Catholic Life Team.



* Jointly reporting to Student Life and Inclusive Excellence