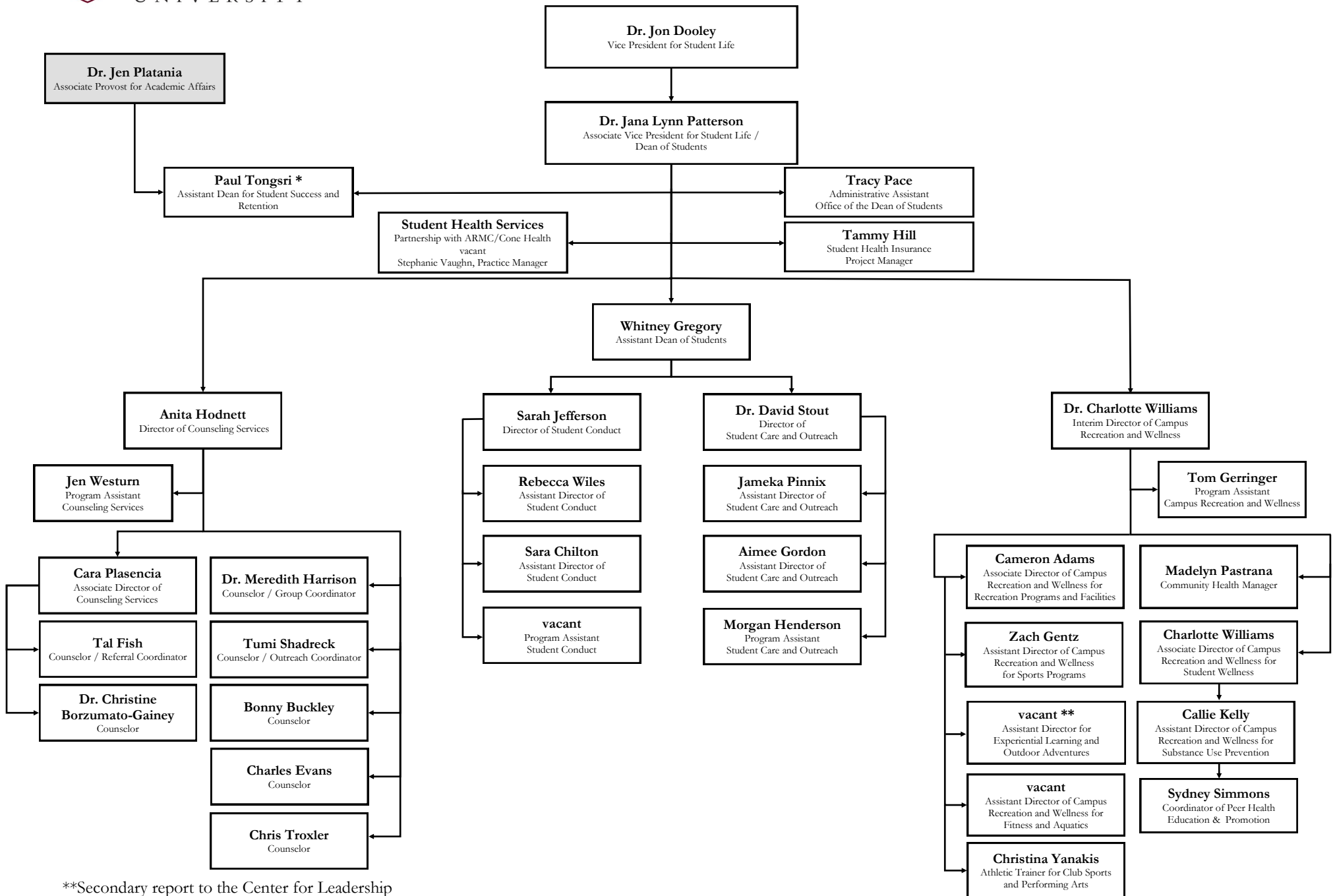


*Jointly reporting to Student Life and Inclusive Excellence

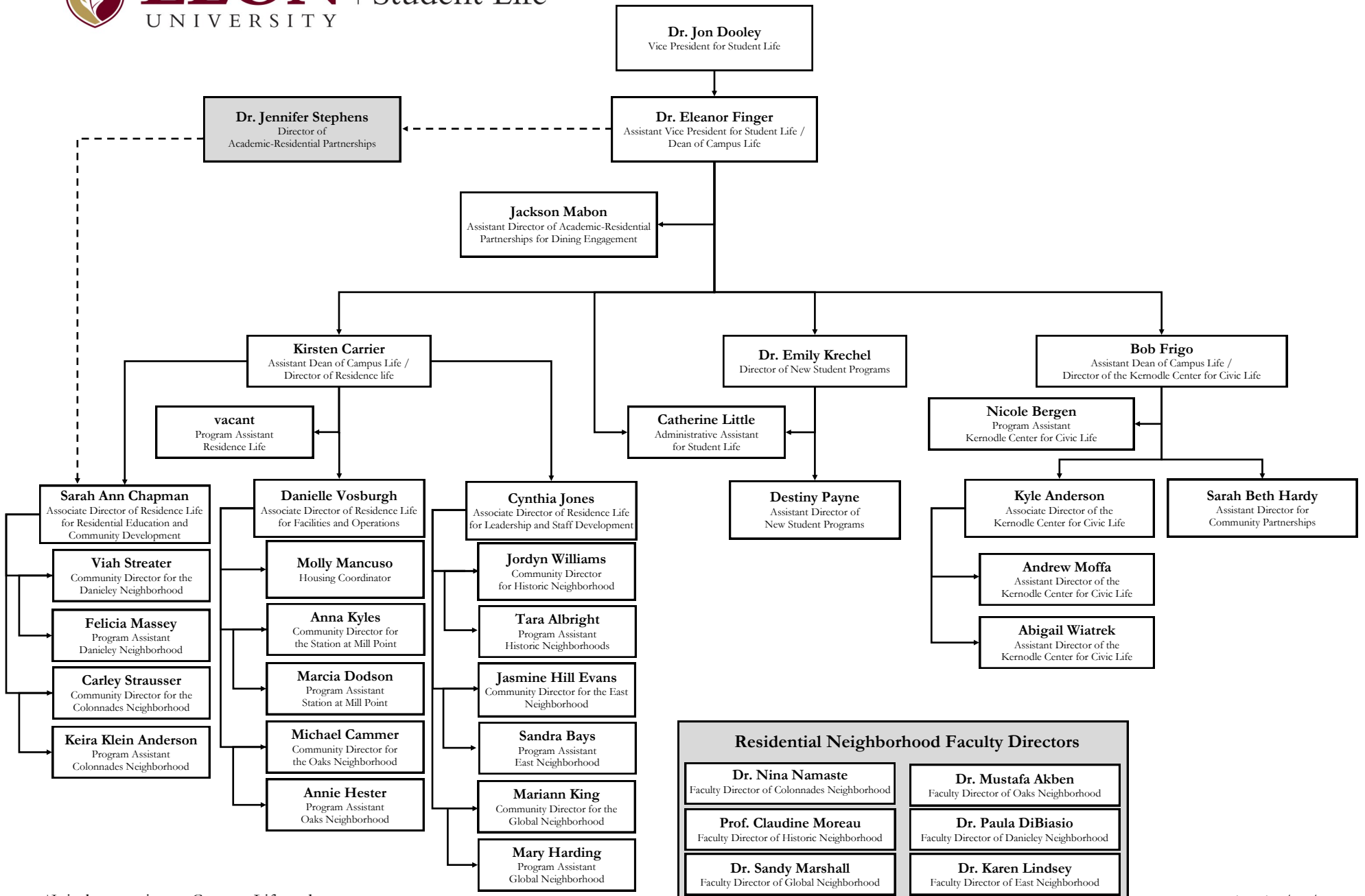
**Jointly reporting to Student Life and University Communications

***Jointly reporting to Student Life and Academic Affairs



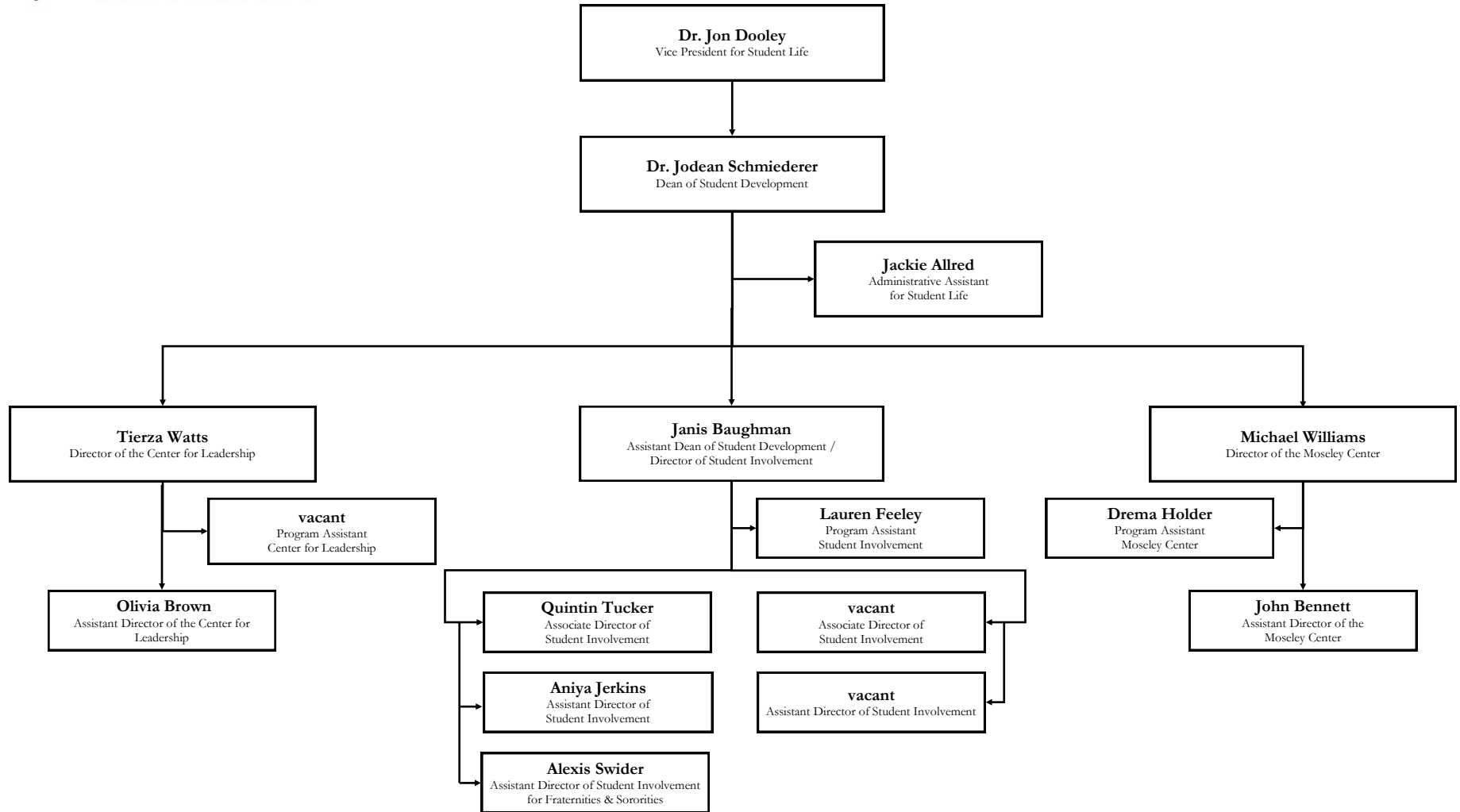
**Secondary report to the Center for Leadership

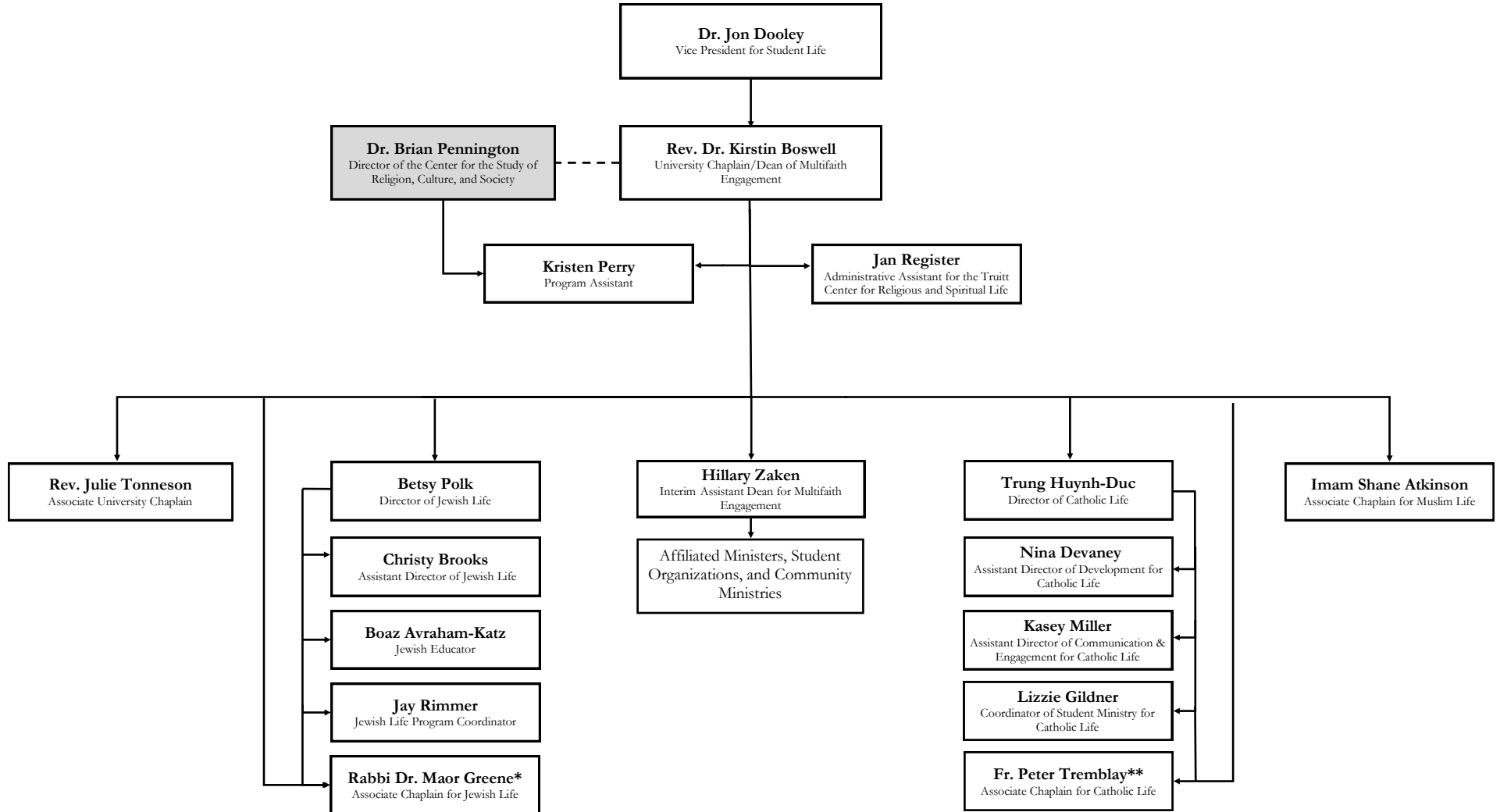
*Jointly reporting to Student Life and Academic Affairs



*Jointly reporting to Campus Life and
New Student Programs

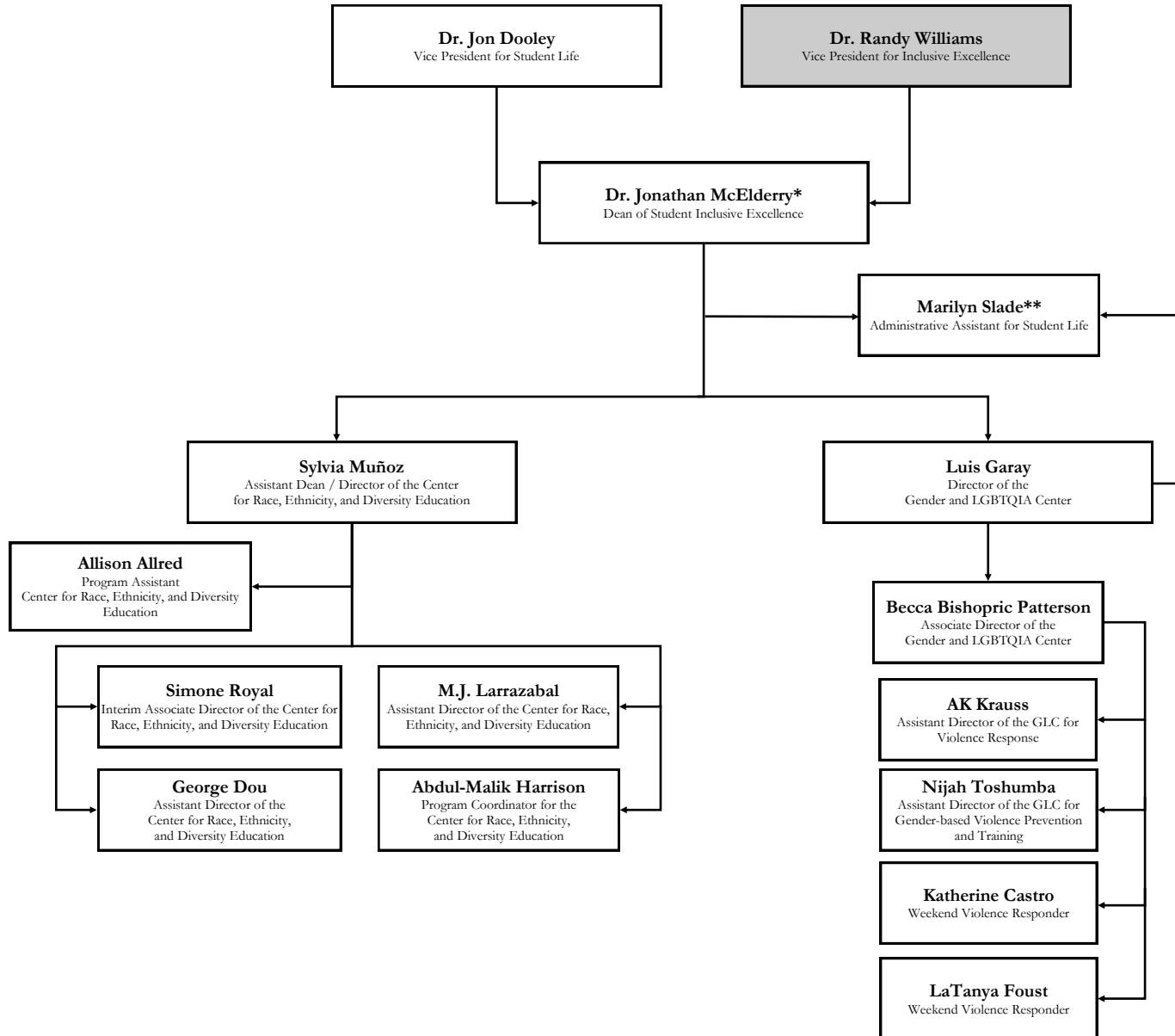
Updated 7/29/2024





*Jointly reporting to Rev. Kirstin Boswell and Betsy Polk as a member of both the Council of Chaplains and Jewish Life Team

**Jointly reporting to Rev. Kirstin Boswell and Trung Huynh-Duc as a member of both the Council of Chaplains and Catholic Life Team



* Jointly reporting to Student Life and Inclusive Excellence

* Jointly reporting to Student Inclusive Excellence and the GLC