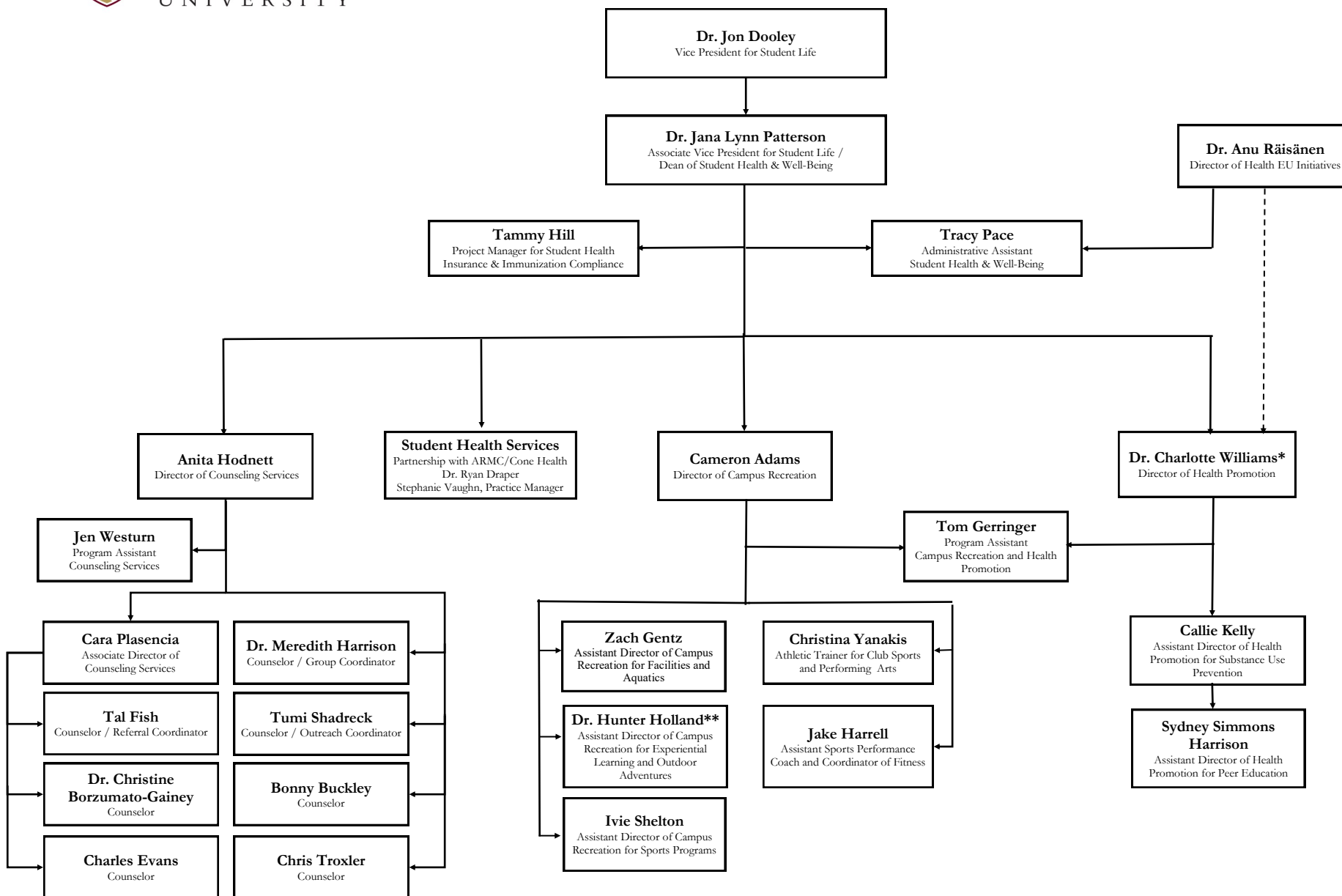


*Jointly reporting to Student Life and Inclusive Excellence

**Jointly reporting to Student Life and University Communications

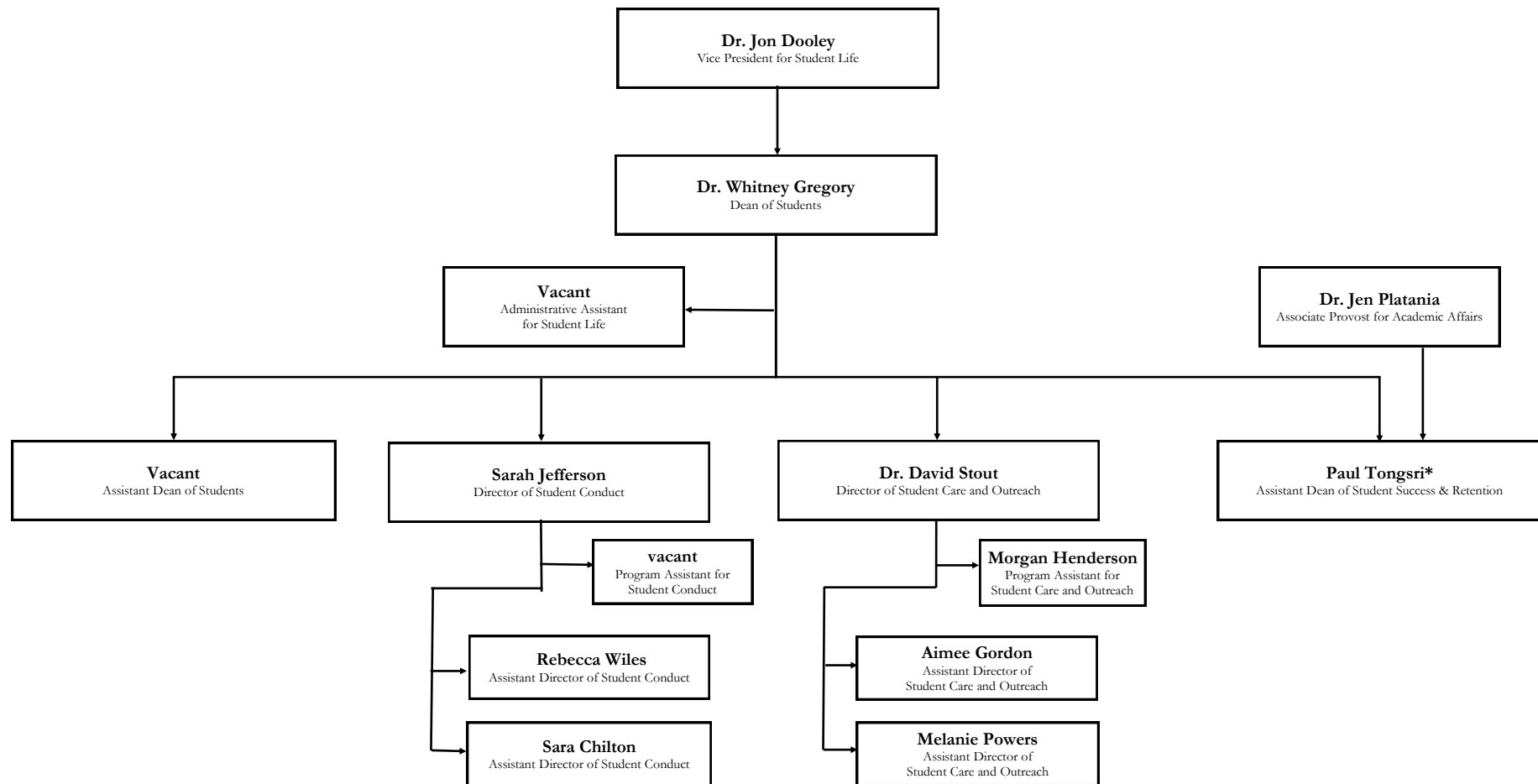
***Jointly reporting to Student Life and Academic Affairs

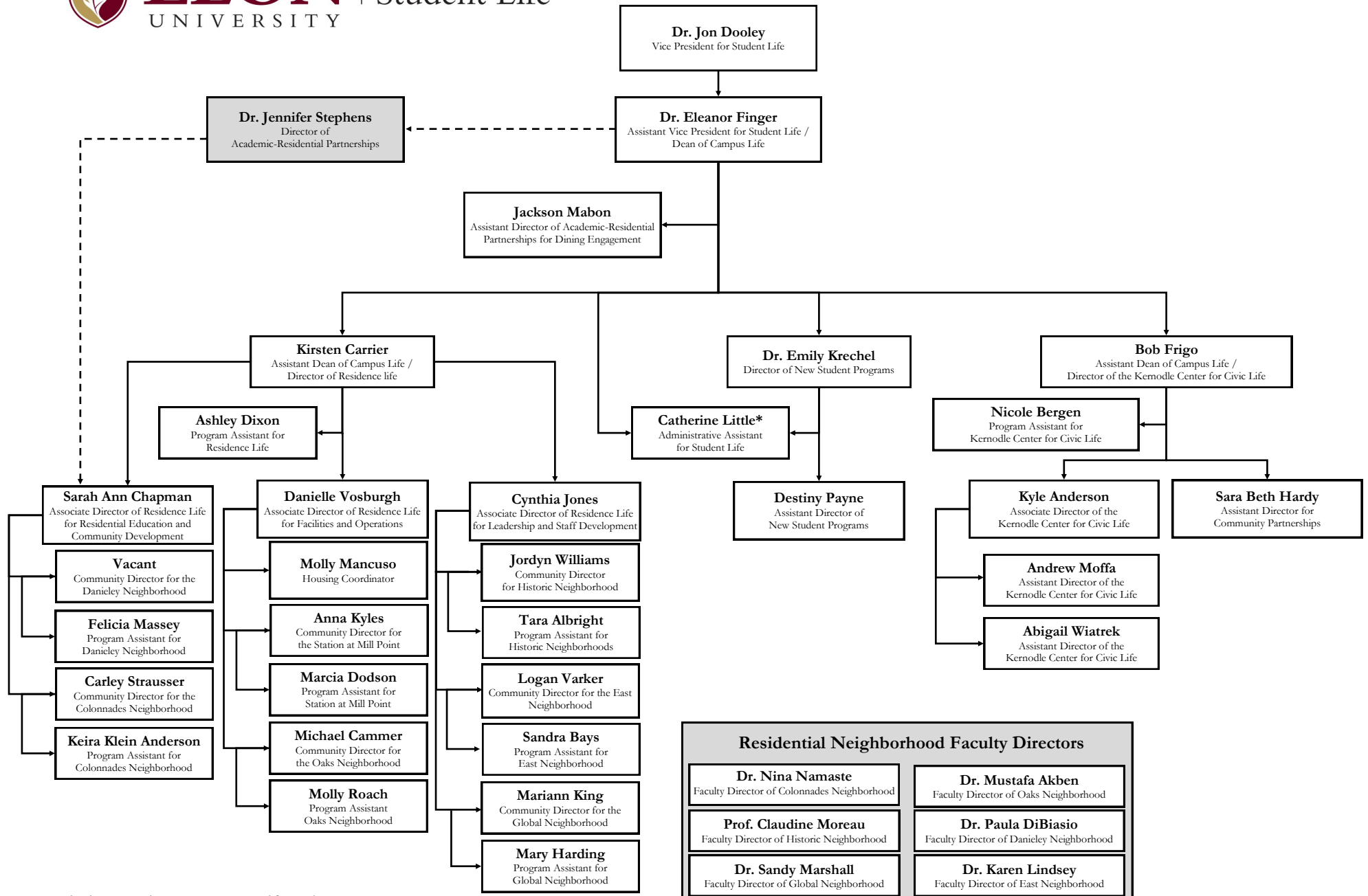
****Reporting to Academic Affairs, secondary report to Student Life



*Secondary report to Academic Affairs

**Secondary report to the Center for Leadership





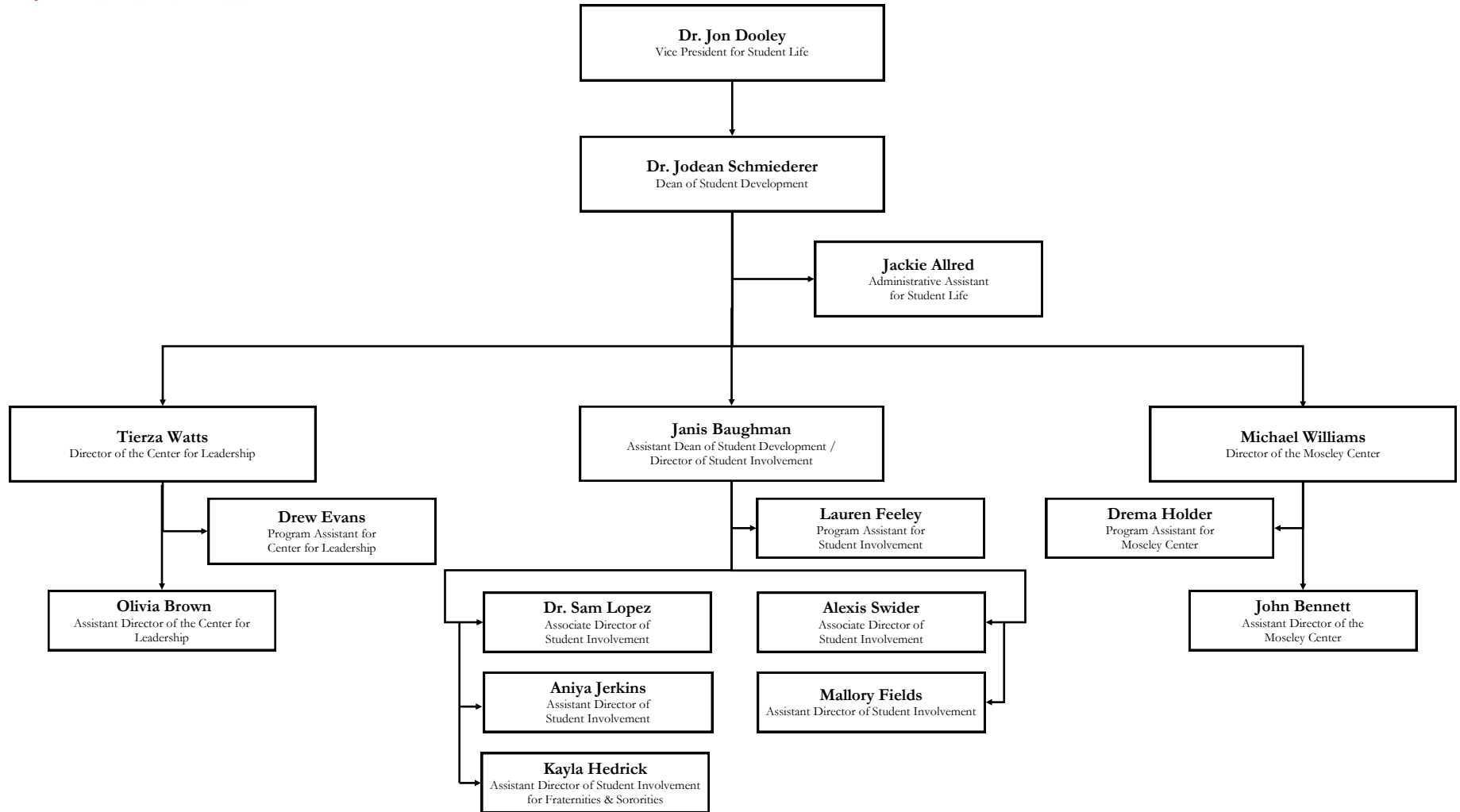
*Jointly reporting to Campus Life and
New Student Programs

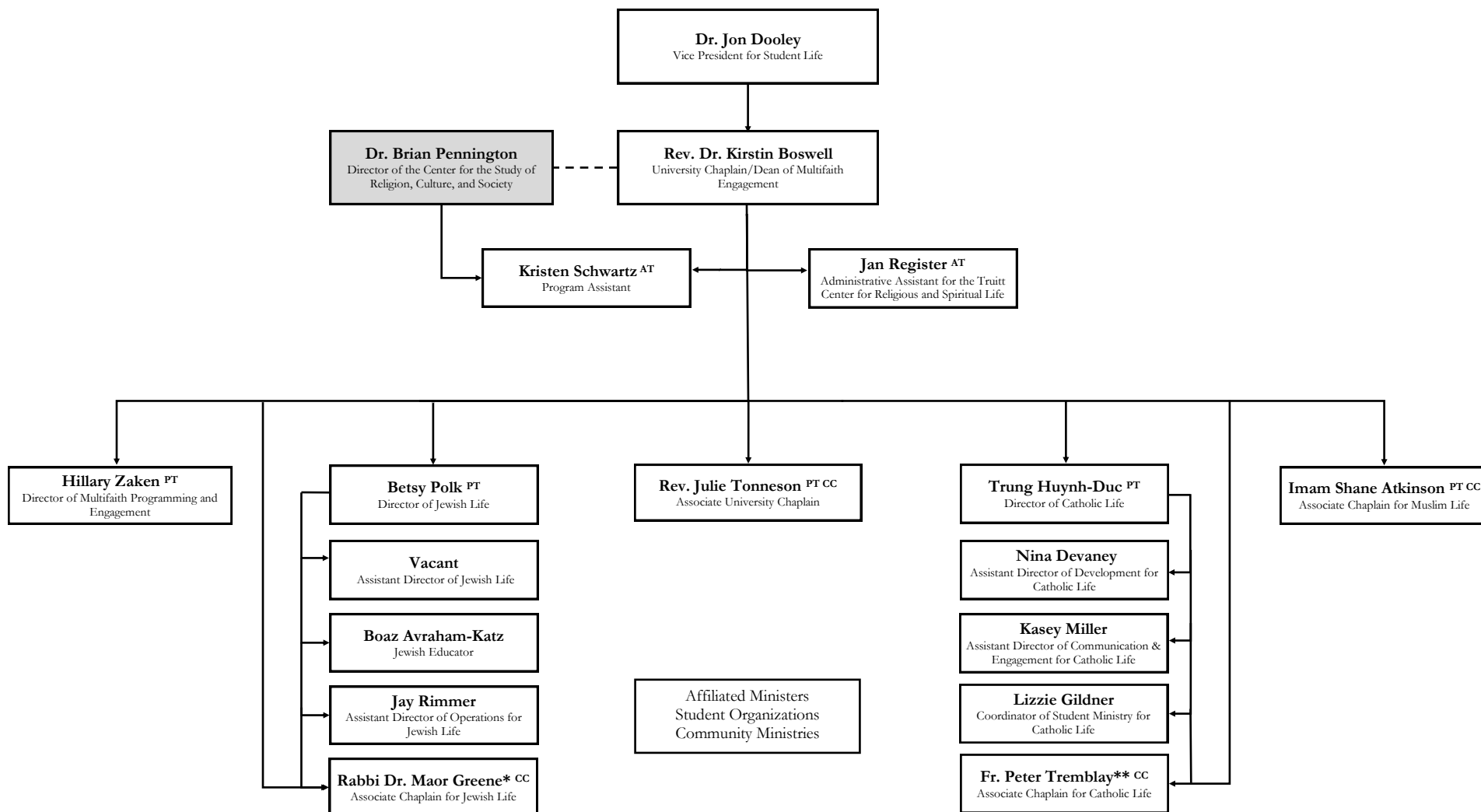
Effective June 1, 2025



ELON
UNIVERSITY

DIVISION OF
Student Life





AT = Administrative Team

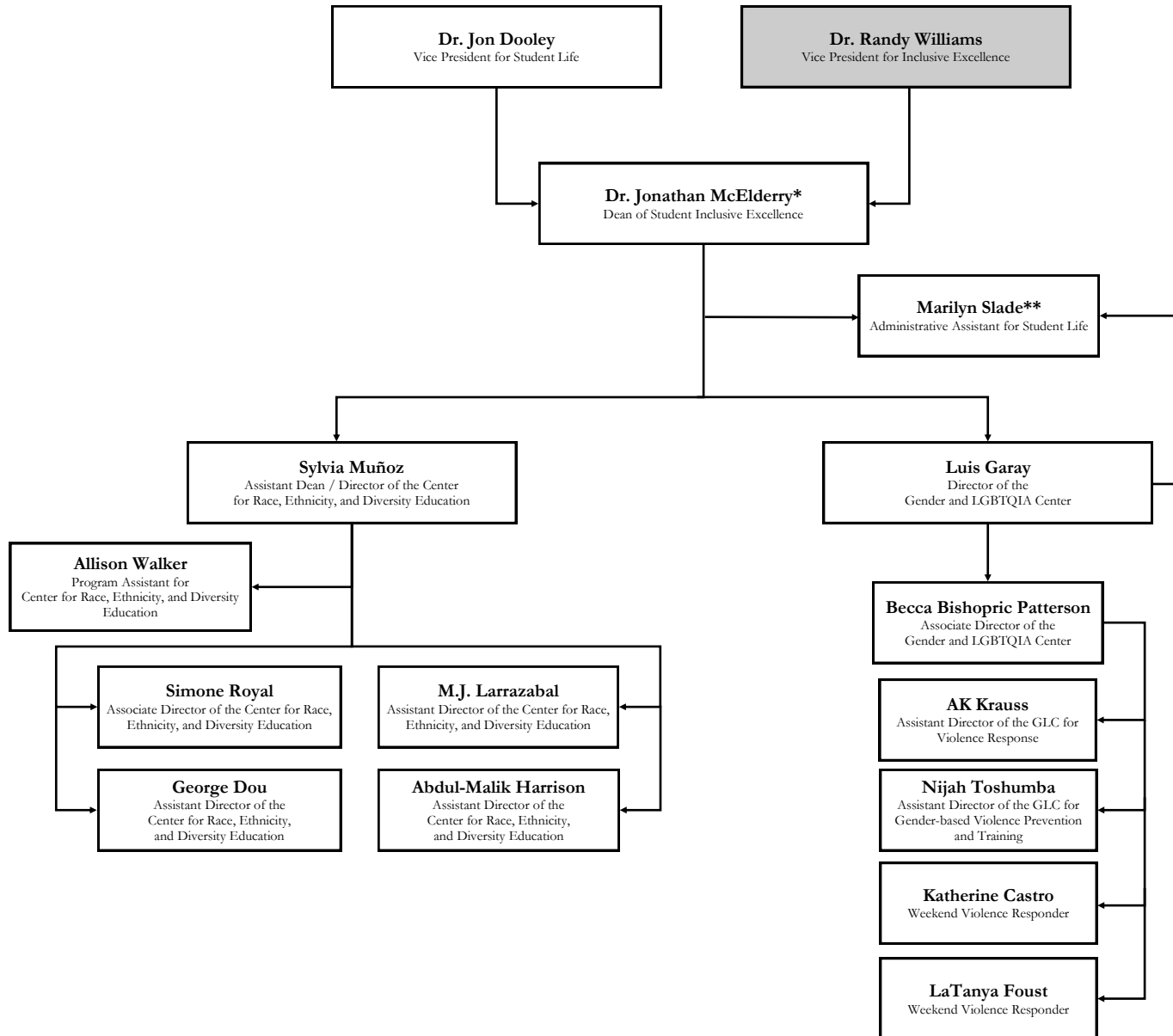
PT = Programmatic Team

CC = Council of Chaplains

*Jointly reporting to Rev. Kirstin Boswell and Betsy Polk as a member of both the Council of Chaplains and Jewish Life Team

**Jointly reporting to Rev. Kirstin Boswell and Trung Huynh-Duc as a member of both the Council of Chaplains and Catholic Life Team

Effective June 1, 2025



* Jointly reporting to Student Life and Inclusive Excellence

** Jointly reporting to Student Inclusive Excellence and the GLC