

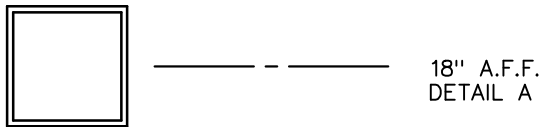
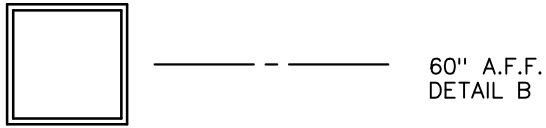


ELON UNIVERSITY

A/V BACK BOX DETAIL

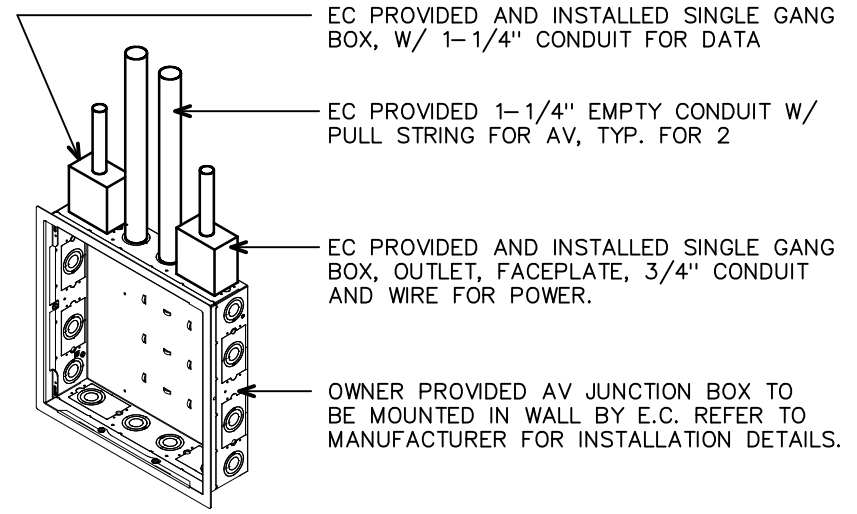
PRODUCT INFORMATION- A/V BACK BOX (PROVIDED BY OWNER)
 PART NUMBER- CHIEF PAC526FW
 WEBSITE - https://www.milestone.com/products/chief/storage_and_power/in-wall/pac526/pac526fw
 TECHNICAL DRAWINGS- <https://www.milestone.com/~media/files/chief/technical%20drawings/pac526f-t.pdf>
 CAD DRAWING- <https://www.milestone.com/~media/files/chief/cad%20drawing/pac526f-w.dwg>

INSTALLATION INSTRUCTIONS- A/V BACK BOX (PROVIDED BY OWNER)
 LOCATE FRONT EDGE OF BOX EXTENDED BEYOND STUDS BY THICKNESS OF SHEETROCK TO BE USED. SAVE FLANGE FOR REATTACHMENT AFTER SHEETROCK IS INSTALLED.

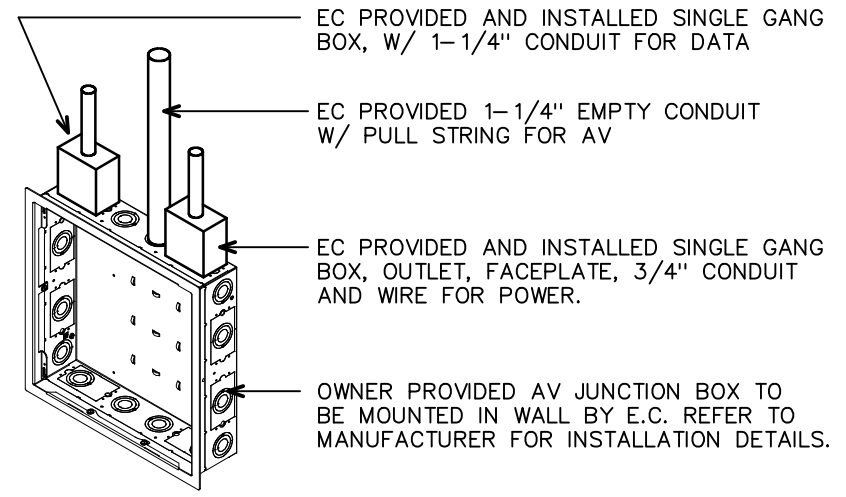


————— FINISHED FLOOR

BOX MOUNTING HEIGHT



DETAIL A LOW IN WALL IN CLASSROOM
 NOT TO SCALE



DETAIL B WALL MOUNTED TV
 NOT TO SCALE