



ELON

Student Professional
Development Center

JUMPSTART PROFESSIONAL DEVELOPMENT



Princeton
Review

#15

Top 20 Career
Centers in 2024

US News &
World Report

#8

Internships

WHO IS HERE?

From North Carolina?

From the Northeast?

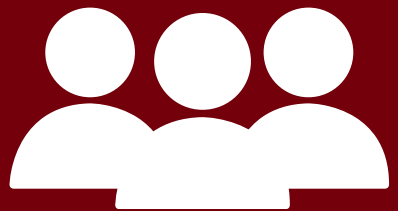
From the West Coast?

From the Midwest?

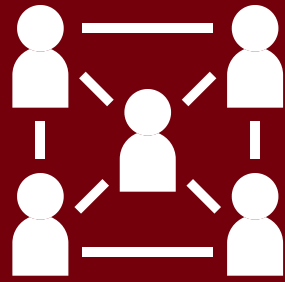
From the South?

From an International Location?

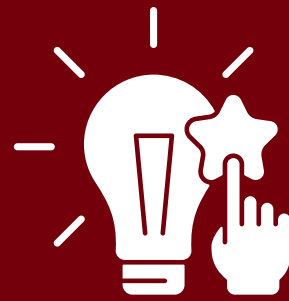
CORPORATE & EMPLOYER RELATIONS



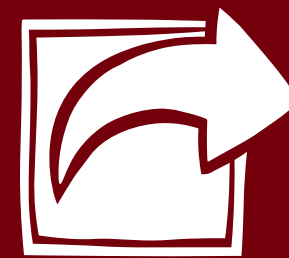
Employer
Facing



Build and
Maintain
Relationships



Fact Finding



Share
Information
Across
Campus

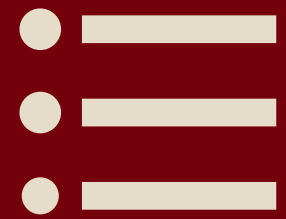
TOP MARKETS

NYC
Boston
Washington, DC
Raleigh
Charlotte

ADDITIONAL MARKETS

Atlanta
Baltimore
Philadelphia
Chicago
Dallas
Denver
Los Angeles
San Francisco
Nashville
& more

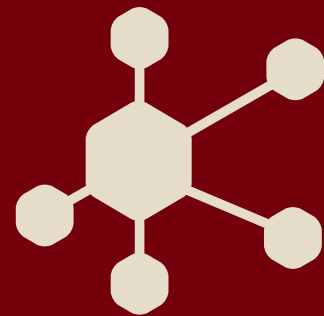
CAREER ADVISING



Resumes &
Cover Letters



Job &
Internship
Search



Networking



Interviewing



On-Campus
Student
Employment

CLASS OF 2023 OUTCOMES

9-months post-graduation

84%

Full-Time
Employment

14%

Enrolled in
Graduate School

87%

Complete an
Internship Before
Graduation

ADDITIONAL POINTS OF PRIDE

9-months post-graduation



95%

Position Relates to
Career Goals



96%

Employed, Attending
Graduate School, Completing
Post-Graduate
Internship/Fellowship, or
Working for a Service
Organization

FIRST YEAR ENGAGEMENT

- Over 90% of Elon 1010 classes visit the SPDC
- Career Exploration and Education: CAE 3110 Explore Self and Careers
- Dedicated first year career advisor



KAMERYN TAYLOR

Assistant Director of Career Services
for Student Employment and First
Year Students

COLLEGE 2 CAREER



College²Career Pathways

Professional Development Rewards Program

Earn rewards and a Digital Badge credential to share with employers or graduate programs on platforms such as LinkedIn, your resume, embedded in a website or email signature, Twitter, Facebook, and more.

Start today!



FIRST PATHWAY

- Build a college resume
- Create a LinkedIn Profile
- Explore “What Can I Do With This Major?”
- Consider major options



STUDENT EMPLOYMENT FAIR

THURSDAY, FEBRUARY 8
3:30 PM-5:00 PM

MCKINNON HALL - MOSELEY CENTER

This is the perfect opportunity for students to explore job openings, connect with Elon's department supervisors, and discover opportunities with Elon's federal work-study Community Partners.

Dive into the World of Work Experience while Keeping Your Academic Journey on Track

SECOND YEAR ENGAGEMENT

- Update resume & LinkedIn
- Make a 1:1 appointment with a career advisor
- Explore potential internships
- Select a major
- Complete an informational interview



FREE PROFESSIONAL PHOTOS

Don't miss the opportunity to invest in your professional image and career development

February 5, 16, 23
March 15
April 12
May 3

ELON SPDC

8AM-5PM
MOSELEY 140

The flyer features a camera on a tripod in a circular frame, a camera icon, and a grid of dots in the top right corner.

COLLEGE 2 CAREER



College²Career Pathways

Professional Development Rewards Program

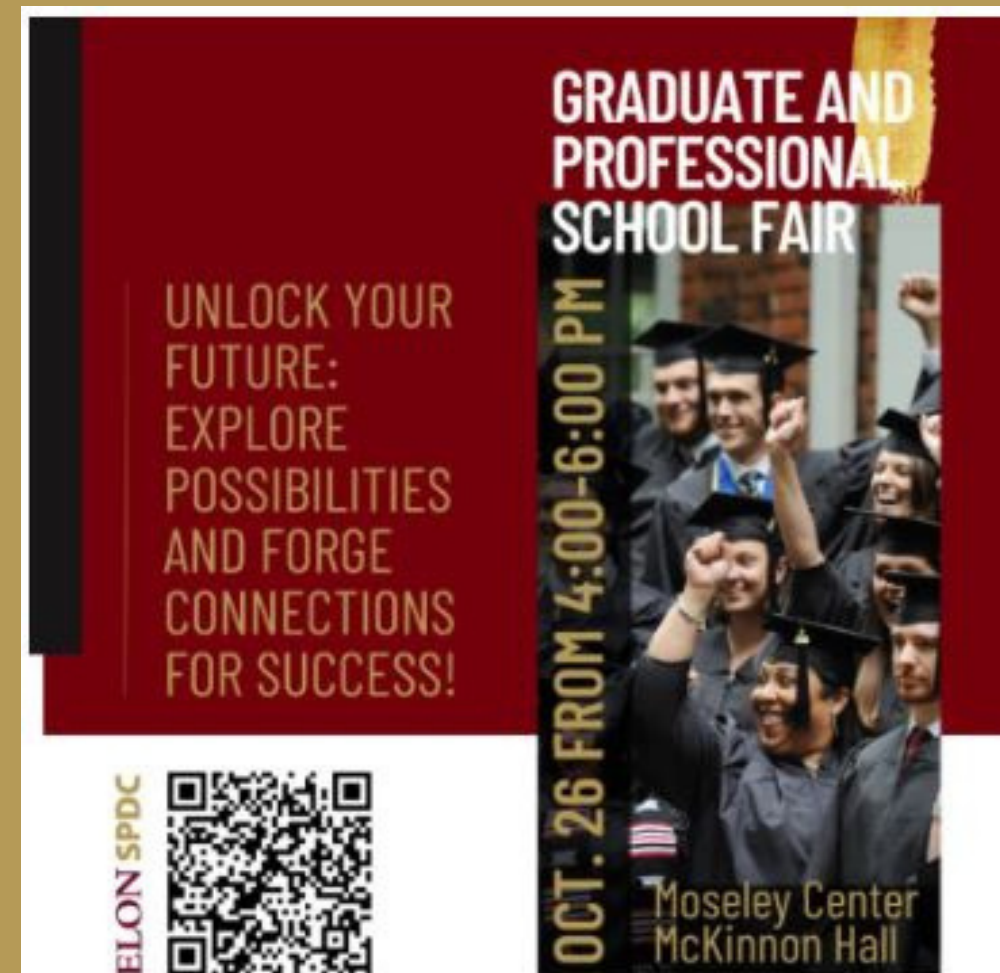
Earn rewards and a Digital Badge credential to share with employers or graduate programs on platforms such as LinkedIn, your resume, embedded in a website or email signature, Twitter, Facebook, and more.

Start today!



SECOND PATHWAY

- Professional Photo
- Cover Letter Review
- Informational Interview
- Attend an event, presentation, or workshop



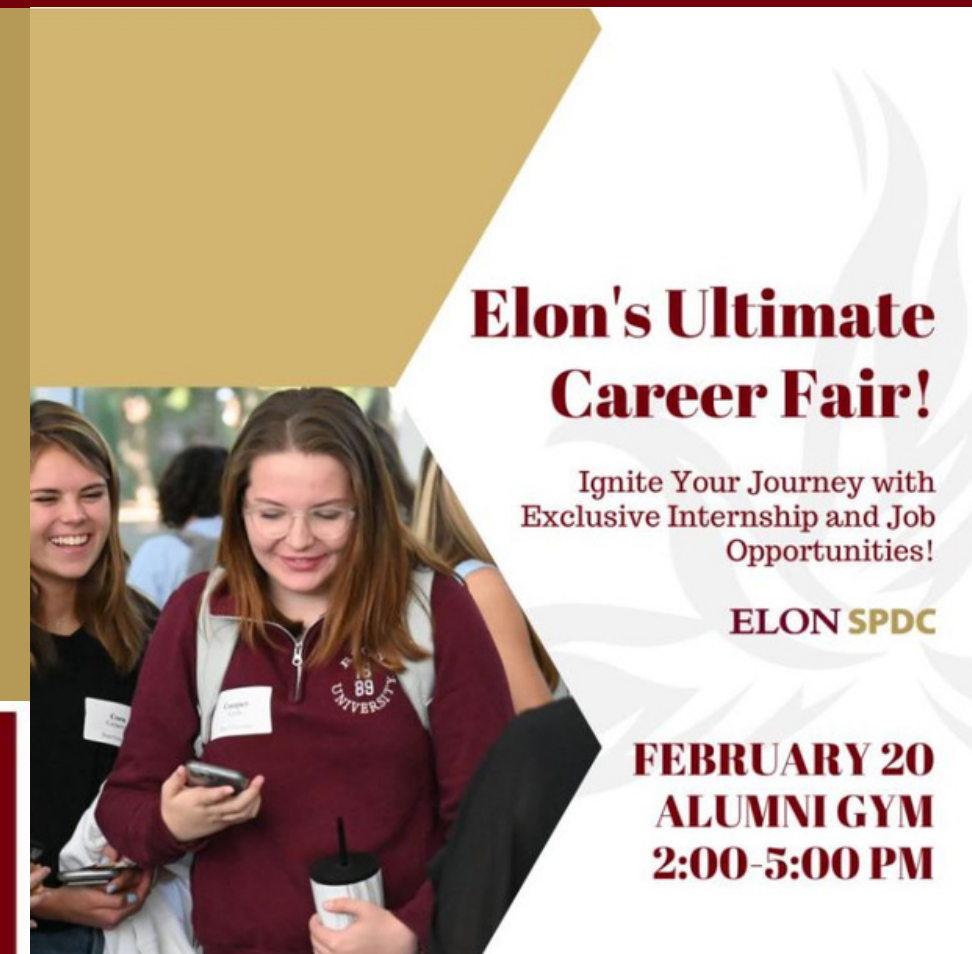

GRADUATE AND PROFESSIONAL SCHOOL FAIR

UNLOCK YOUR FUTURE:
EXPLORE
POSSIBILITIES
AND FORGE
CONNECTIONS
FOR SUCCESS!

OCT. 26 FROM 4:00-6:00 PM

Moseley Center
McKinnon Hall

ELON SPDC




Elon's Ultimate Career Fair!

Ignite Your Journey with
Exclusive Internship and Job
Opportunities!

ELON SPDC

**FEBRUARY 20
ALUMNI GYM
2:00-5:00 PM**



OVERALL

- The more that we get to know a student the better we are able to assist them
- We have opportunities for students to engage with the SPDC throughout campus
- Due to technology, the job and internship search process is constantly changing
- This process is new for students, but doesn't have to be intimidating

**THANK YOU
&
QUESTIONS**